

Friday, September 20, 2024
Time of Issue: 1945 hours IST
(NIGHT)

All India Weather Warning Bulletin

Weather Warnings for next 7 days is given below:

(Graphics for warnings & rainfall distribution (Table 1) are given below the text:

20 September (Day 1):

- ❖ **Heavy rainfall (≥ 7 cm)** very likely at isolated places over Andaman & Nicobar Islands, Telangana, Coastal Andhra Pradesh & Yanam.
- ❖ **Thunderstorm accompanied with lightning** very likely at isolated places over Assam & Meghalaya, Nagaland, Manipur, Mizoram & Tripura, Tamil Nadu, Puducherry & Karaikal, Coastal Andhra Pradesh & Yanam, Telangana, Odisha and Chhattisgarh.
- ❖ **Hot & humid weather** very likely at isolated places over Kerala & Mahe, Tamil Nadu, Puducherry & Karaikal, Sub-Himalayan West Bengal & Sikkim, Assam & Meghalaya, Arunachal Pradesh, Nagaland, Manipur, Mizoram & Tripura.
- ❖ **Squally weather with wind speed reaching 35 kmph to 45 kmph gusting to 55 kmph** very likely to prevail over gulf of Mannar, off Sri Lanka coast, most parts of south Bay of Bengal, few parts of west central Arabian sea and adjoining southwest Arabian sea. **Squally winds with speed reaching 45 kmph to 55 kmph gusting to 65 kmph** likely to prevail over western parts of southwest Arabian sea along and off Somalia coast. Fishermen are advised not to venture into these areas.

21 September (Day 2):

- ❖ **Thunderstorm accompanied with lightning** very likely at isolated places over Assam & Meghalaya, Nagaland, Manipur, Mizoram & Tripura, Marathwada, Tamil Nadu, Puducherry & Karaikal, Coastal Andhra Pradesh & Yanam, Vidarbha, East Madhya Pradesh, Telangana, Chhattisgarh, Gangetic West Bengal, Odisha.
- ❖ **Hot & humid weather** very likely at isolated places over Kerala & Mahe, Tamil Nadu, Puducherry & Karaikal, Sub-Himalayan West Bengal & Sikkim, Assam & Meghalaya, Arunachal Pradesh, Nagaland, Manipur, Mizoram & Tripura.
- ❖ **Squally weather with wind speed reaching 35 kmph to 45 kmph gusting to 55 kmph** very likely to prevail over gulf of Mannar, off Sri Lanka coast, many parts of south Bay of Bengal. **Squally winds with speed reaching 45 kmph to 55 kmph gusting to 65 kmph** likely to prevail over western parts of southwest Arabian sea adjoining west central Arabian sea along and off Somalia coast. Fishermen are advised not to venture into these areas.

22 September (Day 3):

- ❖ **Heavy rainfall (≥ 7 cm)** very likely at isolated places over Odisha and Nagaland, Manipur, Mizoram & Tripura.
- ❖ **Thunderstorm accompanied with lightning** very likely at isolated places over Assam & Meghalaya, Nagaland, Manipur, Mizoram & Tripura, Marathwada, Coastal Andhra Pradesh & Yanam, Telangana, East Madhya Pradesh, Vidarbha, Chhattisgarh, Gangetic West Bengal, Jharkhand.
- ❖ **Hot & humid weather** very likely at isolated places over Kerala & Mahe, Tamil Nadu, Puducherry & Karaikal, Assam & Meghalaya, Arunachal Pradesh, Nagaland, Manipur, Mizoram & Tripura.
- ❖ **Squally weather with wind speed reaching 35 kmph to 45 kmph gusting to 55 kmph** very likely to prevail over gulf of Mannar, off Sri Lanka coast, many parts of south Bay of Bengal. **Squally winds with speed reaching 45 kmph to 55 kmph gusting to 65 kmph** likely to prevail over western parts of southwest Arabian sea adjoining west central Arabian sea along and off Somalia coast. Fishermen are advised not to venture into these areas.

23 September (Day 4):

- ❖ **Heavy rainfall (≥ 7 cm)** likely at isolated places over Assam & Meghalaya, Arunachal Pradesh, Nagaland, Manipur, Mizoram & Tripura, Chhattisgarh and Odisha.
- ❖ **Thunderstorm accompanied with lightning** likely at isolated places over Assam & Meghalaya, Nagaland, Manipur, Mizoram & Tripura, Madhya Maharashtra, Marathwada, Rayalaseema, Karnataka, Madhya Pradesh, Vidarbha, Jharkhand and Chhattisgarh.
- ❖ **Squally weather with wind speed reaching 35 kmph to 45 kmph gusting to 55 kmph** likely to prevail gulf of Mannar, off Sri Lanka coast, many parts of south Bay of Bengal. **Squally winds with speed reaching 45 kmph to 55 kmph gusting to 65 kmph** likely to prevail over western parts of southwest Arabian sea adjoining west central Arabian sea along and off Somalia coast. Fishermen are advised not to venture into these areas.

24 September (Day 5):

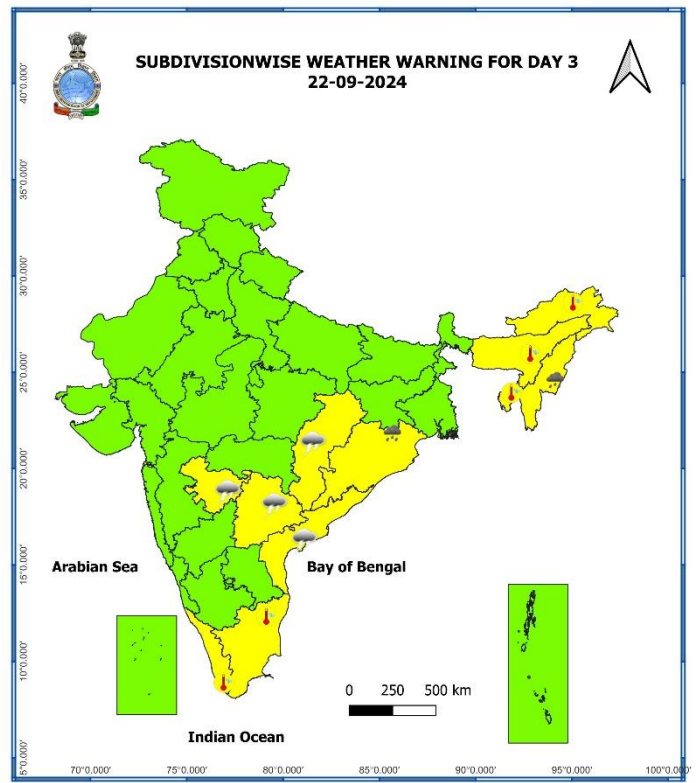
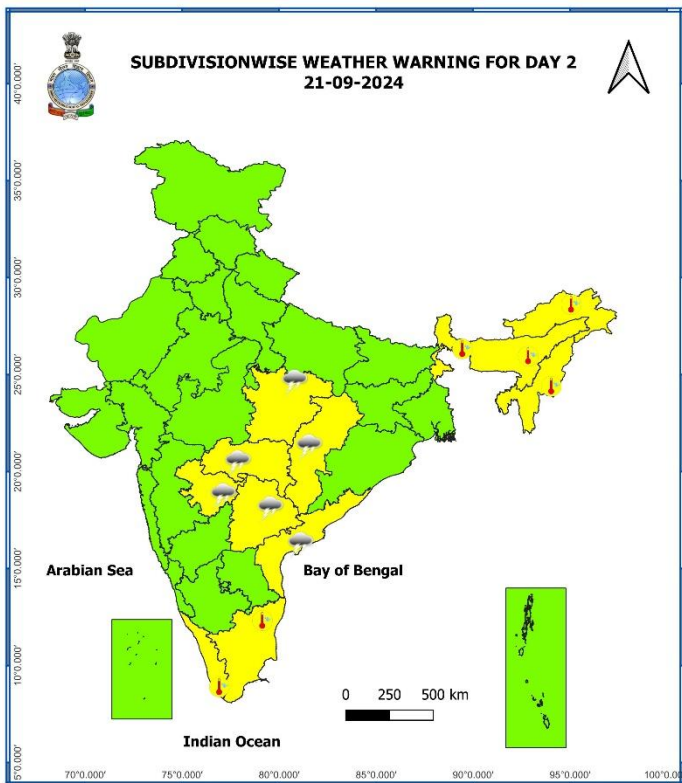
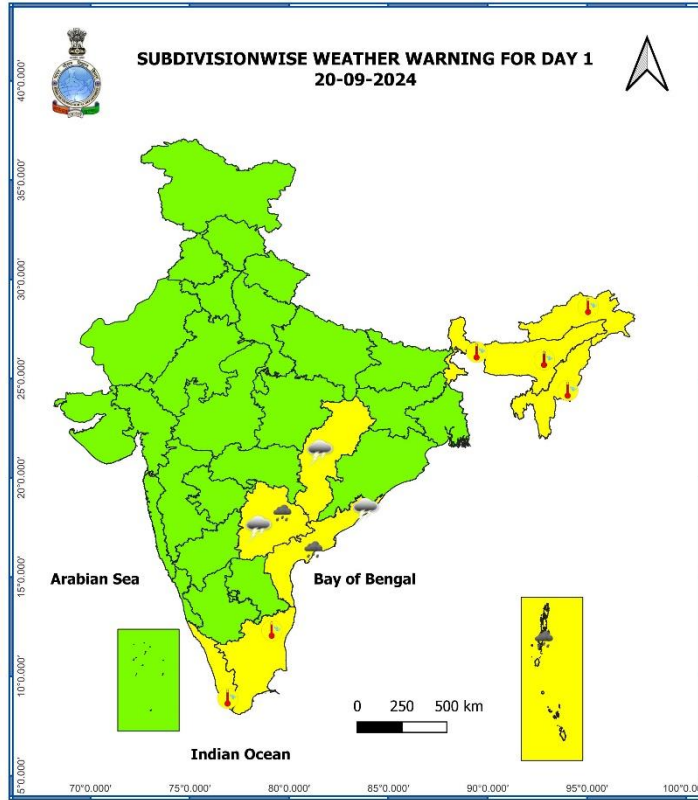
- ❖ **Heavy rainfall (≥ 7 cm)** likely at isolated places over Assam & Meghalaya, Arunachal Pradesh, Nagaland, Manipur, Mizoram & Tripura, Konkan & Goa, Madhya Maharashtra, Coastal Andhra Pradesh & Yanam, North Interior Karnataka, East Madhya Pradesh, Vidarbha, Chhattisgarh and Odisha.
- ❖ **Thunderstorm accompanied with lightning** likely at isolated places over Nagaland, Manipur, Mizoram & Tripura, Konkan & Goa, Madhya Maharashtra, Marathwada, Rayalaseema, Karnataka, Madhya Pradesh, Vidarbha, Chhattisgarh, Jharkhand.
- ❖ **Squally weather with wind speed reaching 35 kmph to 45 kmph gusting to 55 kmph** likely to prevail over gulf of Mannar, off Sri Lanka coast, many parts of south and adjoining central Bay of Bengal. **Squally winds with speed reaching 45 kmph to 55 kmph gusting to 65 kmph** likely to prevail over western parts of southwest Arabian sea adjoining west central Arabian sea along and off Somalia coast. Fishermen are advised not to venture into these areas.

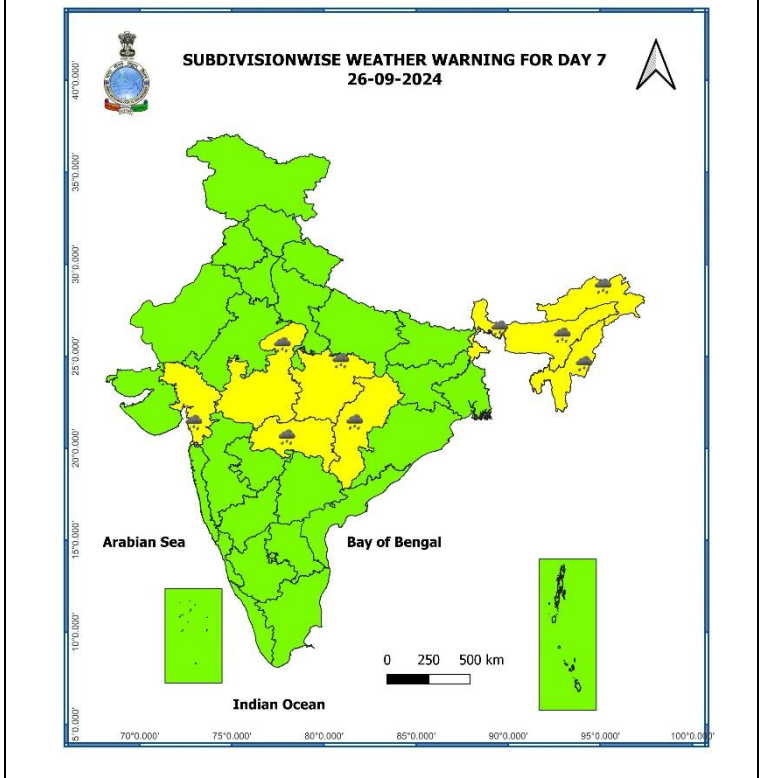
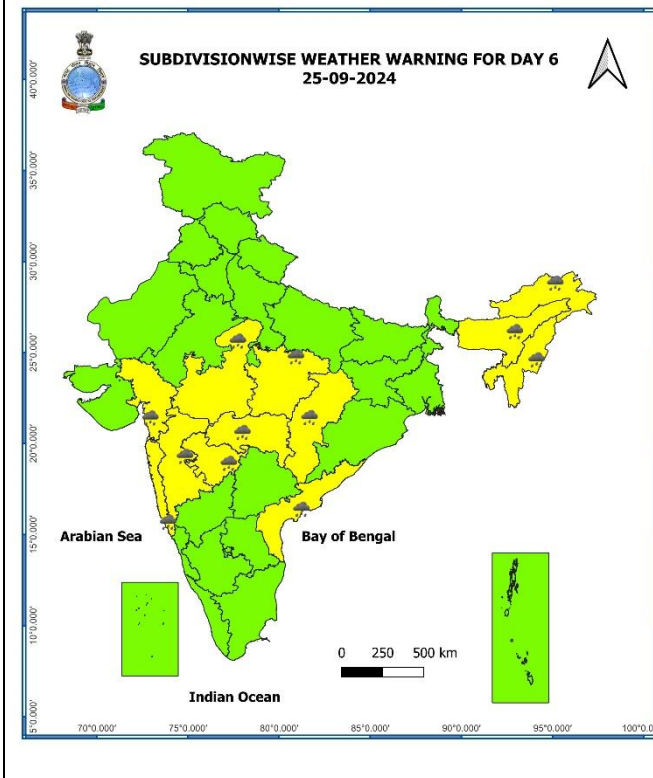
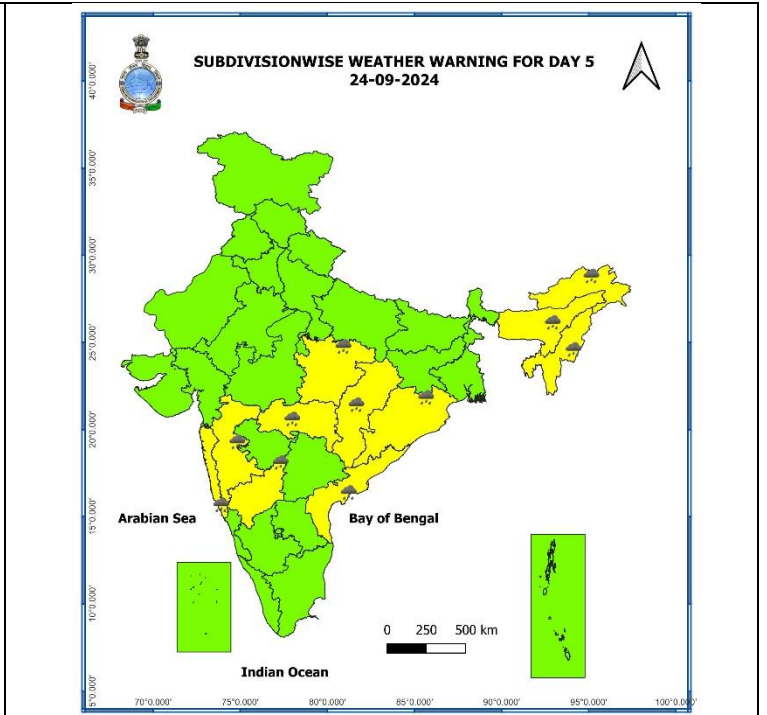
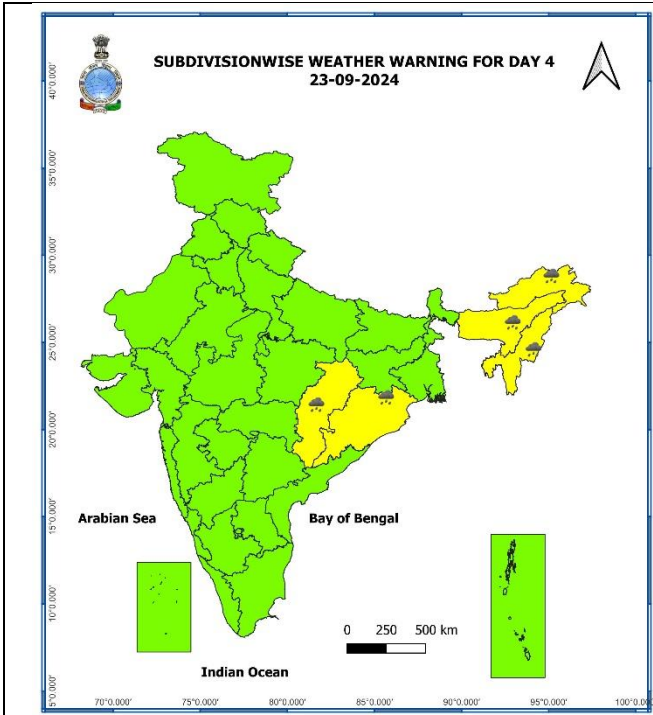
25 September (Day 6):

- ❖ **Heavy rainfall (≥ 7 cm)** likely at isolated places over Konkan & Goa, Madhya Maharashtra, Marathwada, Gujarat Region, Coastal Andhra Pradesh & Yanam, Madhya Pradesh, Vidarbha, Chhattisgarh, Arunachal Pradesh, Assam & Meghalaya, Nagaland, Manipur, Mizoram & Tripura.

26 September (Day 7):

- ❖ **Heavy rainfall (≥ 7 cm)** likely at isolated places over Gujarat Region, Madhya Pradesh, Vidarbha, Chhattisgarh, Arunachal Pradesh, Assam & Meghalaya, Nagaland, Manipur, Mizoram & Tripura and Sub-Himalayan West Bengal & Sikkim.





- Action may be taken based on **ORANGE AND RED** COLOUR warnings.
- Vulnerable regions likely urban and hilly areas action may be initiated for heavy rainfall warning.
- As the lead period increases forecast accuracy decreases.

Table-1

7 Days Rainfall Forecast								
S. No.	Subdivision	20-Sep	21-Sep	22-Sep	23-Sep	24-Sep	25-Sep	26-Sep
		Day 1	Day 2	Day 3	Day 4	Day 5	Day 6	Day 7
1	ANDAMAN & NICOBAR ISLANDS	WS	WS	WS	WS	FWS	FWS	FWS
2	ARUNACHAL PRADESH	ISOL	ISOL	ISOL	SCT	SCT	FWS	FWS
3	ASSAM & MEGHALAYA	ISOL	ISOL	SCT	FWS	FWS	FWS	FWS
4	NAGALAND, MANIPUR, MIZORAM & TRIPURA	ISOL	ISOL	SCT	FWS	FWS	FWS	FWS
5	SUB-HIMALAYAN WEST BENGAL & SIKKIM	ISOL	ISOL	ISOL	SCT	FWS	FWS	FWS
6	GANGETIC WEST BENGAL	ISOL	SCT	SCT	SCT	FWS	FWS	FWS
7	ODISHA	SCT	SCT	FWS	FWS	FWS	FWS	FWS
8	JHARKHAND	ISOL	ISOL	SCT	SCT	SCT	FWS	FWS
9	BIHAR	ISOL	DRY	DRY	ISOL	ISOL	ISOL	ISOL
10	EAST UTTAR PRADESH	ISOL	ISOL	ISOL	ISOL	SCT	SCT	FWS
11	WEST UTTAR PRADESH	ISOL	ISOL	ISOL	ISOL	ISOL	SCT	SCT
12	UTTARAKHAND	DRY	ISOL	ISOL	ISOL	ISOL	SCT	SCT
13	HARYANA CHANDIGARH & DELHI	ISOL	ISOL	ISOL	ISOL	ISOL	SCT	SCT
14	PUNJAB	ISOL	ISOL	ISOL	ISOL	ISOL	SCT	SCT
15	HIMACHAL PRADESH	DRY	DRY	ISOL	ISOL	ISOL	SCT	SCT
16	JAMMU & KASHMIR AND LADAKH	ISOL	DRY	DRY	DRY	DRY	DRY	FWS
17	WEST RAJASTHAN	ISOL	DRY	DRY	DRY	DRY	DRY	DRY
18	EAST RAJASTHAN	ISOL	ISOL	ISOL	ISOL	ISOL	ISOL	ISOL
19	WEST MADHYA PRADESH	ISOL	ISOL	SCT	SCT	FWS	FWS	FWS
20	EAST MADHYA PRADESH	ISOL	SCT	SCT	FWS	FWS	FWS	FWS
21	GUJARAT REGION	ISOL	ISOL	ISOL	ISOL	SCT	FWS	FWS
22	SAURASHTRA & KUTCH	ISOL	ISOL	ISOL	ISOL	ISOL	SCT	SCT
23	KONKAN & GOA	ISOL	ISOL	ISOL	ISOL	FWS	WS	WS
24	MADHYA MAHARASHTRA	ISOL	ISOL	ISOL	ISOL	SCT	FWS	FWS
25	MARATHAWADA	ISOL	SCT	ISOL	SCT	FWS	WS	FWS
26	VIDARBHA	ISOL	SCT	SCT	FWS	FWS	WS	WS
27	CHHATTISGARH	SCT	SCT	FWS	FWS	FWS	FWS	FWS
28	COASTAL ANDHRA PRADESH & YANAM	SCT	SCT	FWS	WS	WS	FWS	SCT
29	TELANGANA	SCT	SCT	SCT	FWS	FWS	SCT	SCT
30	RAYALASEEMA	ISOL	SCT	SCT	FWS	FWS	SCT	ISOL
31	TAMILNADU PUDUCHERRY & KARAIKAL	ISOL	ISOL	ISOL	ISOL	ISOL	ISOL	ISOL
32	COASTAL KARNATAKA	SCT	SCT	FWS	WS	WS	WS	WS
33	NORTH INTERIOR KARNATAKA	ISOL	SCT	FWS	FWS	WS	FWS	SCT
34	SOUTH INTERIOR KARNATAKA	ISOL	ISOL	SCT	FWS	WS	SCT	ISOL
35	KERALA & MAHE	ISOL	ISOL	SCT	FWS	SCT	SCT	SCT
36	LAKSHADWEEP	DRY	DRY	SCT	SCT	SCT	SCT	SCT

- As the lead period increases forecast accuracy decreases.

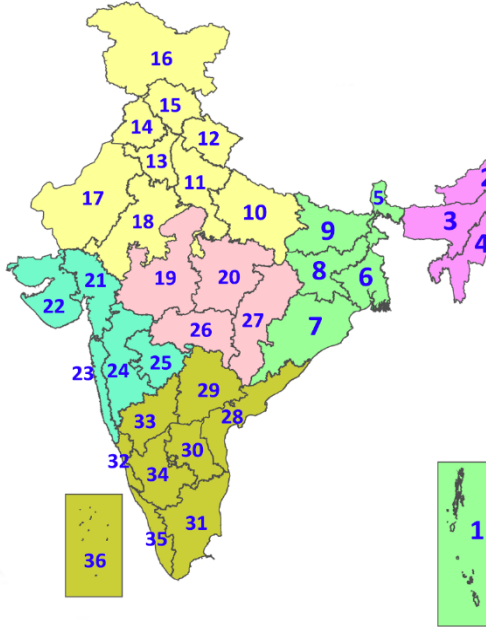
Legends & abbreviations:

- ❖ **Heavy Rain:**64.5-115.5mm; **Very Heavy Rain:**115.6-204.4mm; **Extremely Heavy Rain:** >204.4mm.
- ❖ **Obsy:** Observatory; **AWS:** Automatic Weather Station; **ARG:** Automatic Rain Gauge; **dist:** District; **NH:** National Highway; **KVK:** Krishi Vigyan Kendra; **DVC:** Damodar Valley Corporation; **PTO:** Part Time Office, **Aero:** Aerodrome, **IAF:** Indian Air Force.

- ❖ **Region wise classification of meteorological Sub-Divisions:**
 - **Northwest India:** Western Himalayan Region (Jammu-Kashmir-Ladakh-Gilgit-Baltistan-Muzaffarabad, Himachal Pradesh and Uttarakhand); Punjab, Haryana-Chandigarh-Delhi; West Uttar Pradesh, East Uttar Pradesh, West Rajasthan and East Rajasthan.
 - **Central India:** West Madhya Pradesh, East Madhya Pradesh, Vidarbha and Chhattisgarh.
 - **East India:** Bihar, Jharkhand, Sub-Himalayan West Bengal & Sikkim; Gangetic West Bengal, Odisha and Andaman & Nicobar Islands.
 - **Northeast India:** Arunachal Pradesh, Assam & Meghalaya and Nagaland, Manipur, Mizoram & Tripura.
 - **West India:** Gujarat Region, Saurashtra & Kutch, Konkan & Goa, Madhya Maharashtra and Marathawada.
 - **South India:** Coastal Andhra Pradesh & Yanam, Telangana, Rayalaseema, Coastal Karnataka, North Interior Karnataka, South Interior Karnataka, Kerala & Mahe, Tamil Nadu, Puducherry & Karaikal and Lakshadweep.

LEGENDS

1. अंडमान और निकोबार द्वीपसमूह
2. अरुणाचल प्रदेश
3. असम और मेघालय
4. नागालैंड, मणिपुर, मिजोरम और त्रिपुरा
5. उप-हिमालयी पश्चिम बंगाल और सिक्किम
6. गंगीय पश्चिम बंगाल
7. ओडिशा
8. झारखंड
9. बिहार
10. पूर्वी उत्तर प्रदेश
11. पश्चिम उत्तर प्रदेश
12. उत्तराखंड
13. हरियाणा, चंडीगढ़ और दिल्ली
14. पंजाब
15. हिमाचल प्रदेश
16. जम्मू और कश्मीर और लद्दाख
17. पश्चिम राजस्थान
18. पूर्वी राजस्थान
19. पश्चिम मध्य प्रदेश
20. पूर्वी मध्य प्रदेश
21. गुजरात
22. सौराष्ट्र
23. कोंकण और गोवा
24. मध्य महाराष्ट्र
25. मराठवाड़ा
26. विदर्भ
27. छत्तीसगढ़
28. तटीय आंध्र प्रदेश और यनम
29. तेलंगाना
30. रायलसीमा
31. तमिलनाडु, पुडुचेरी और कराईकल
32. तटीय कर्नाटक
33. आंतरिक उत्तरी कर्नाटक
34. आंतरिक दक्षिणी कर्नाटक
35. केरल और माहे
36. लक्षद्वीप



1. Andaman & Nicobar Islands
2. Arunachal Pradesh
3. Assam & Meghalaya
4. Nagaland, Manipur, Mizoram & Tripura
5. Sub-Himalayan West Bengal & Sikkim
6. Gangetic West Bengal
7. Odisha
8. Jharkhand
9. Bihar
10. East Uttar Pradesh
11. West Uttar Pradesh
12. Uttarakhand
13. Haryana, Chandigarh & Delhi
14. Punjab
15. Himachal Pradesh
16. Jammu & Kashmir and Ladakh
17. West Rajasthan
18. East Rajasthan
19. West Madhya Pradesh
20. East Madhya Pradesh
21. Gujarat
22. Saurashtra
23. Konkan & Goa
24. Madhya Maharashtra
25. Marathwada
26. Vidarbha
27. Chhattisgarh
28. Coastal Andhra Pradesh & Yanam
29. Telangana
30. Rayalaseema
31. Tamilnadu, Puducherry & Karaikal
32. Coastal Karnataka
33. North Interior Karnataka
34. South Interior Karnataka
35. Kerala & Mahe
36. Lakshadweep

SPATIAL DISTRIBUTION (% of Stations reporting)

% Stations	Category	% Stations	Category
76-100	Widespread (WS/Most Places)	26-50	Scattered (SCT/A Few Places)
51-75	Fairly Widespread (FWS/Many Places)	1-25	Isolated (ISOL)

- | | | |
|----------------------|----------------------|--------------|
| Fog | Heavy Snow | Cold Wave |
| Heavy Rain | Dust Storm | Cold Day |
| Very Heavy Rain | Heat Wave | Ground Frost |
| Extremely Heavy Rain | Warm Night | |
| Thunder & Lightning | Hot Day | |
| Hailstorm | Hot & Humid | |
| Dust Raising Winds | Strong Surface Winds | |

COLOUR CODED WARNING

No Warning (No Action)
Watch (Be Aware)
Alert (Be Prepared To Take Action)
Warning (Take Action)

Probabilistic Forecast

Terms	Probability of Occurrence (%)
Unlikely	< 25
Likely	25 - 50
Very Likely	50 - 75
Most Likely	> 75

* Red colour warning does not mean "Red Alert", Red colour warning means "Take Action".
Forecast and Warning for any day is valid from 0830 hours IST of day till 0830 hours IST of next day.
For more details, kindly visit <https://mausam.imd.gov.in> or contact: 011-2434-4599
(Service to the Nation since 1875)

DEFINITION/CRITERIA

Rain/ Snow *	Heavy: 64.5 to 115.5 mm/cm * Very Heavy: 115.6 to 204.4 mm/cm* Extremely Heavy: > 204.4 mm/cm *
Heat Wave	When maximum temperature of a station reaches $\geq 40^\circ\text{C}$ for plains and $\geq 30^\circ\text{C}$ for hilly regions (a) Based on Departure from normal Heat Wave: Maximum Temperature Departure from normal 4.5°C to 6.4°C . Severe Heat Wave: Maximum Temperature Departure from normal $\geq 6.5^\circ\text{C}$ (b). Based on Actual maximum temperature Heat Wave: When actual maximum temperature $\geq 45^\circ\text{C}$. Severe Heat Wave: When actual maximum temperature $\geq 47^\circ\text{C}$ (c). Criteria for heat wave for coastal stations When maximum temperature departure is $>4.5^\circ\text{C}$ from normal. Heat Wave may be described provided maximum temperature $\geq 37^\circ\text{C}$
Warm Night	When maximum temperature remains 40°C Warm Night: When minimum temperature departure 4.5°C to 6.4°C . Severe Warm Night: When minimum temperature departure $>6.4^\circ\text{C}$.
Cold Wave	When minimum temperature of a station $\leq 10^\circ\text{C}$ for plains and $\leq 0^\circ\text{C}$ for hilly regions. (a). Based on departure Cold Wave: Minimum Temperature Departure from normal -4.5°C to -6.4°C . Severe Cold Wave: Minimum Temperature Departure from normal $\leq -6.5^\circ\text{C}$ (b) Based on actual Minimum Temperature (for Plains only) Cold Wave : When Minimum Temperature is $\leq 4.0^\circ\text{C}$ Severe Cold Wave: When Minimum Temperature is $\leq 2.0^\circ\text{C}$ (c) For Coastal Stations When Minimum Temperature departure is $\leq -4.5^\circ\text{C}$ & actual Minimum Temperature is $\leq 15^\circ\text{C}$
Cold Day	When minimum temperature of a station $\leq 10^\circ\text{C}$ for plains and $\leq 0^\circ\text{C}$ for hilly regions Based on departure Cold Day: Maximum Temperature Departure from normal -4.5°C to -6.4°C . Severe Cold Day: Maximum Temperature Departure from normal $\leq -6.5^\circ\text{C}$
Fog	Phenomenon of small droplets suspended in air and the horizontal visibility $< 1\text{km}$ Moderate Fog: When the visibility between 500-200 metres Dense Fog: when the visibility between 50- 200 metres Very Dense Fog: when the visibility < 50 metres
Thunderstorm	Sudden electrical discharges manifested by a flash of light (Lightning) and a sharp rumbling sound (thunder)
Dust/Sand Storm	An ensemble of particles of dust or sand energetically lifted to great heights by a strong and turbulent wind.
Frost	Ice deposits on ground Air temperature $\leq 4^\circ\text{C}$ (over Plains)
Squall	A strong wind that rises suddenly, lasts for atleast 1 minute. Moderate: Wind speed 52-61 kmph Severe: Wind speed 62-87 kmph Very Severe: Wind speed >87 kmph
Sea State	Effect of various waves in the sea over specific area Rough to very rough: Wind speed 41-62 kmph (22-33 knots) & Wave height 2.5-6 metre High to very high: Wind speed 63-117 kmph (34-63 knots) & Wave height 6-14 metre Phenomenal: Wind speed >117 kmph (>63 knots) & Wave height >14 metre
Cyclone	Cyclonic Storm: Wind speed 62-87 kmph (34-47 knots) Severe Cyclonic Storm: Wind speed 88-117 kmph (48-63 knots) Very Severe Cyclonic Storm: Wind speed 118-165 kmph (64 - 89 knots) Extremely Severe Cyclonic Storm: Wind speed 166-220 kmph (90 -119 knots) Super Cyclone Strom: Wind speed >220 kmph (>119 knots)