

Wednesday, May 07, 2025  
Time of Issue: 0800 hours IST  
(MORNING)

### All India Impact Based Weather Warning Bulletin

Weather Warnings for next 7 days is given below:

(Graphics for warnings & rainfall distribution (Table 1) are given below the text:

#### 07<sup>th</sup> May (Day 1)

- ❖ **Thundersquall with wind speed reaching(50-60kmph)** very likely at isolated places over Assam & Meghalaya, East Rajasthan, Gujarat, Madhya Maharashtra, Madhya Pradesh and Marathwada.
- ❖ **Thunderstorm accompanied with lightning & gusty winds(40-50kmph)** very likely at isolated places over Andhra Pradesh, Himachal Pradesh, Konkan & Goa, Telangana, Uttarakhand and West Rajasthan.
- ❖ **Thunderstorm accompanied with lightning & gusty winds(30-40kmph)** very likely at isolated places over Bihar, Chhattisgarh, Haryana, Chandigarh & Delhi, Kerala and Mahe, Nagaland, Manipur, Mizoram and Tripura, Odisha, Punjab, South Interior Karnataka, Tamilnadu & Puducherry, Uttar Pradesh, Vidarbha and West Bengal & Sikkim.
- ❖ **Hot and Humid** very likely at isolated places over Kerala and Mahe and Tamilnadu & Puducherry.
- ❖ **Thunderstorm accompanied with Hailstorm** very likely at isolated places over Madhya Maharashtra, Madhya Pradesh and Marathwada.
- ❖ **Thunderstorm accompanied with Lightning** very likely at isolated places over Andhra Pradesh, Arunachal Pradesh, Assam & Meghalaya, Bihar, Chhattisgarh, Haryana, Chandigarh & Delhi, Himachal Pradesh, Kerala and Mahe, Konkan & Goa, Madhya Pradesh, Maharashtra, Nagaland, Manipur, Mizoram and Tripura, Odisha, Punjab, Rajasthan, Saurashtra & Kutch, South Interior Karnataka, Tamilnadu & Puducherry, Telangana, Uttar Pradesh and West Bengal & Sikkim.
- ❖ **Heavy Rainfall** very likely at isolated places over Arunachal Pradesh, Assam & Meghalaya, Coastal Andhra Pradesh, East Rajasthan, Gujarat and Uttarakhand.
- ❖ **Squally wind with speed 45 kmph to 50 kmph gusting to 55 kmph** very likely to prevail along and off Oman coast, over some parts of northwest Arabian Sea, along & off Gujarat coast. **Squally wind with speed 45 kmph to 50 kmph gusting to 55 kmph** very likely to prevail along and off north Konkan coast. Fisherman advice not to venture in this sea area.

#### 08<sup>th</sup> May (Day 2)

- ❖ **Thundersquall with wind speed reaching(50-60kmph)** very likely at isolated places over Gujarat Region.
- ❖ **Thunderstorm accompanied with lightning & gusty winds(40-50kmph)** very likely at isolated places over Assam & Meghalaya, Coastal Andhra Pradesh, Himachal Pradesh, Madhya Pradesh, Marathwada, Rajasthan, Saurashtra & Kutch and Uttarakhand.
- ❖ **Thunderstorm accompanied with lightning & gusty winds(30-40kmph)** very likely at isolated places over Chhattisgarh, Haryana, Chandigarh & Delhi, Kerala and Mahe, Nagaland, Manipur, Mizoram and Tripura, Punjab, Rayalaseema, South Interior Karnataka, Telangana, Vidarbha and West Uttar Pradesh.
- ❖ **Hot and Humid** very likely at isolated places over Odisha and Tamilnadu & Puducherry.
- ❖ **Heat Wave** very likely at isolated places over Gangetic West Bengal.
- ❖ **Thunderstorm accompanied with Lightning** very likely at isolated places over Andhra Pradesh, Arunachal Pradesh, Assam & Meghalaya, Chhattisgarh, Haryana, Chandigarh & Delhi, Himachal Pradesh, Kerala and Mahe, Konkan & Goa, Madhya Pradesh, Maharashtra, Nagaland, Manipur, Mizoram and Tripura, Punjab, Rajasthan, Saurashtra & Kutch, South Interior Karnataka, Telangana and Uttar Pradesh.
- ❖ **Heavy Rainfall** very likely at isolated places over Arunachal Pradesh, Assam & Meghalaya, Gujarat and Kerala and Mahe.

#### 09<sup>th</sup> May (Day 3)

- ❖ **Thunderstorm accompanied with lightning & gusty winds(40-50kmph)** likely at isolated places over Assam & Meghalaya, Chhattisgarh, Coastal Andhra Pradesh, Gujarat, Himachal Pradesh, Jammu and Kashmir and Ladakh, Madhya Pradesh, Rajasthan, South Interior Karnataka, Uttarakhand and Vidarbha.
- ❖ **Thunderstorm accompanied with lightning & gusty winds(30-40kmph)** likely at isolated places over Haryana, Chandigarh & Delhi, Kerala and Mahe, Nagaland, Manipur, Mizoram and Tripura, North Interior Karnataka, Punjab, Rayalaseema, Telangana and West Uttar Pradesh.
- ❖ **Heat Wave** likely at isolated places over Bihar, Gangetic West Bengal and Odisha.
- ❖ **Thunderstorm accompanied with Lightning** likely at isolated places over Andhra Pradesh, Arunachal Pradesh, Assam & Meghalaya, Chhattisgarh, Haryana, Chandigarh & Delhi, Himachal Pradesh, Interior Karnataka, Jammu and Kashmir and Ladakh, Kerala and Mahe, Madhya Maharashtra, Madhya Pradesh, Nagaland, Manipur, Mizoram and Tripura, Punjab, Rajasthan, Saurashtra & Kutch, Telangana, Vidarbha and West Uttar Pradesh.
- ❖ **Heavy Rainfall** likely at isolated places over Assam & Meghalaya and Kerala and Mahe.

#### 10<sup>th</sup> May (Day 4)

- ❖ **Thunderstorm accompanied with lightning & gusty winds(40-50kmph)** likely at isolated places over Assam & Meghalaya, Chhattisgarh, East Madhya Pradesh, Jammu and Kashmir and Ladakh, Rajasthan, South Interior Karnataka, Uttarakhand and Vidarbha.
- ❖ **Thunderstorm accompanied with lightning & gusty winds(30-40kmph)** likely at isolated places over Andhra Pradesh, Haryana, Chandigarh & Delhi, Himachal Pradesh, Kerala and Mahe, Nagaland, Manipur, Mizoram and Tripura, North Interior Karnataka, Punjab, Telangana and West Uttar Pradesh.
- ❖ **Heat Wave** likely at isolated places over Bihar, Gangetic West Bengal, Jharkhand and Odisha.
- ❖ **Thunderstorm accompanied with Lightning** likely at isolated places over Andhra Pradesh, Arunachal Pradesh, Assam & Meghalaya, Chhattisgarh, East Madhya Pradesh, Haryana, Chandigarh & Delhi, Himachal Pradesh, Interior Karnataka, Jammu and Kashmir and Ladakh, Kerala and Mahe, Nagaland, Manipur, Mizoram and Tripura, Punjab, Rajasthan, Telangana, Vidarbha and West Uttar Pradesh.
- ❖ **Heavy Rainfall** likely at isolated places over Arunachal Pradesh, Assam & Meghalaya and Kerala and Mahe.

#### 11<sup>th</sup> May (Day 5)

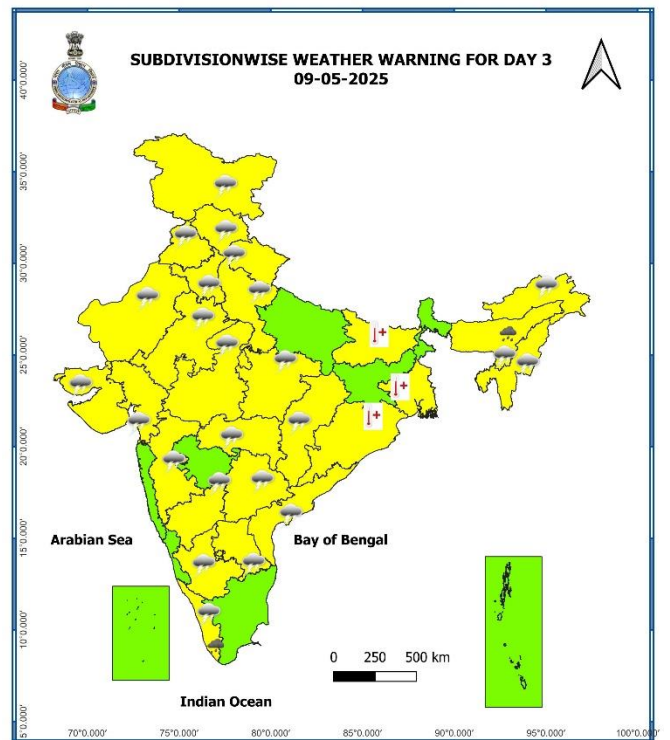
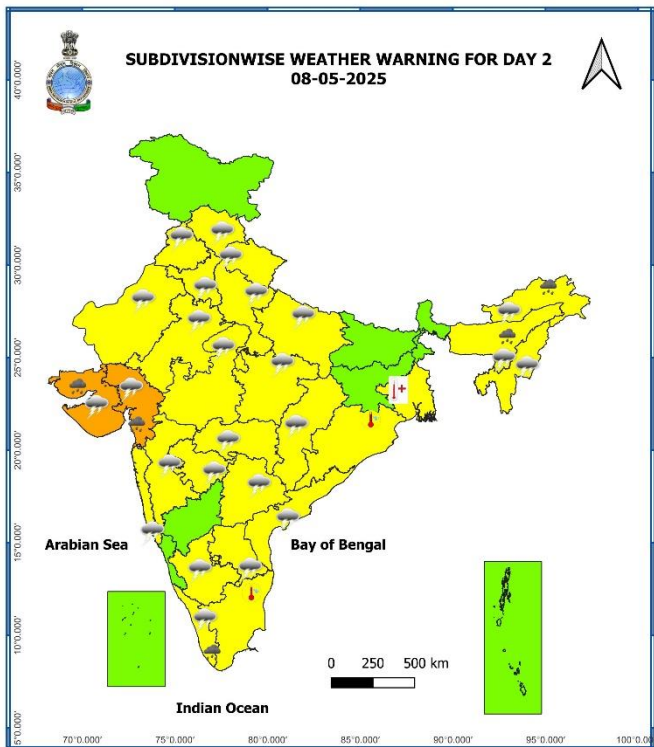
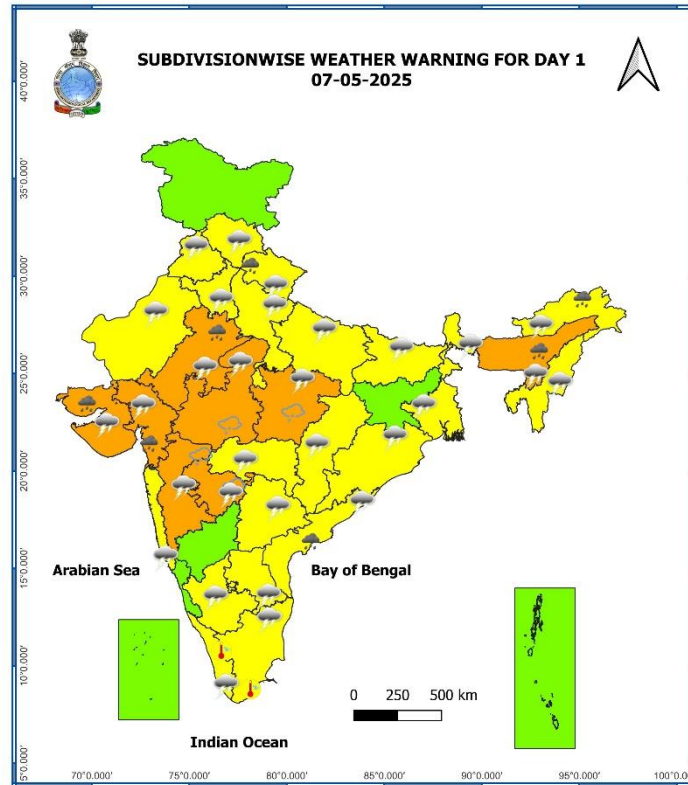
- ❖ **Thunderstorm accompanied with lightning & gusty winds(40-50kmph)** likely at isolated places over East Rajasthan and Uttarakhand.
- ❖ **Thunderstorm accompanied with lightning & gusty winds(30-40kmph)** likely at isolated places over Haryana, Chandigarh & Delhi, Himachal Pradesh, Punjab and West Uttar Pradesh.
- ❖ **Heat Wave** likely at isolated places over Bihar, Gangetic West Bengal, Jharkhand and Odisha.
- ❖ **Thunderstorm accompanied with Lightning** likely at isolated places over East Rajasthan, Haryana, Chandigarh & Delhi, Himachal Pradesh, Punjab and West Uttar Pradesh.
- ❖ **Heavy Rainfall** likely at isolated places over Assam & Meghalaya.

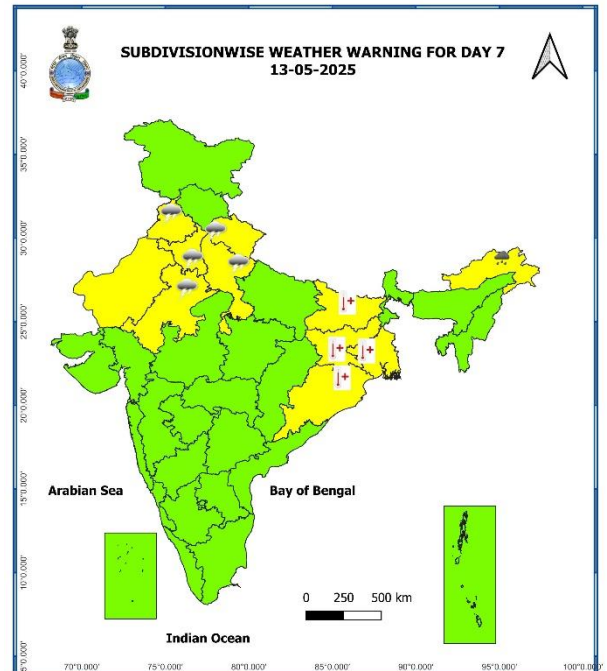
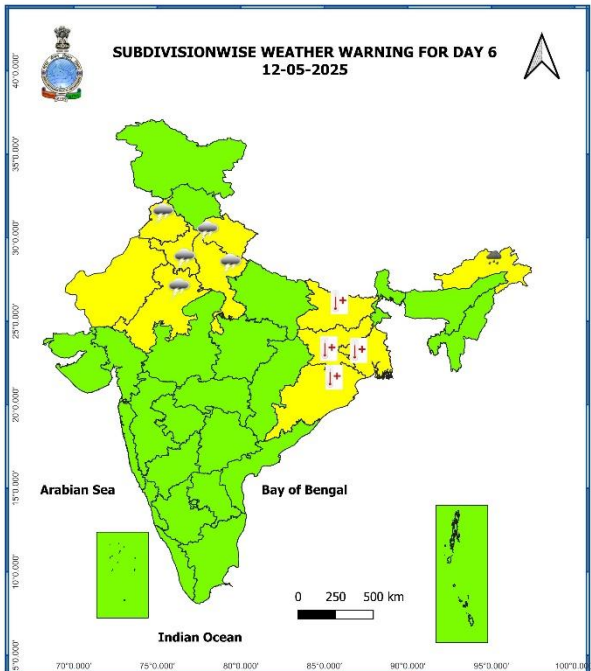
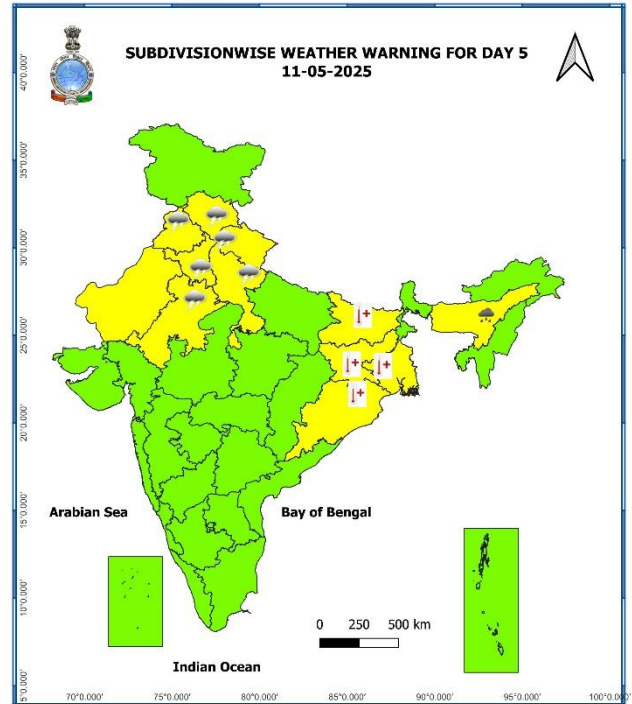
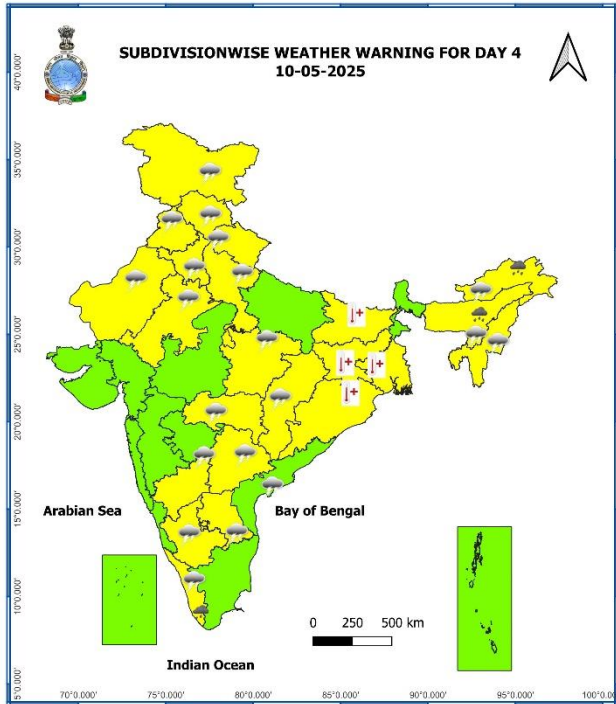
## 12<sup>th</sup> May (Day 6)

- ❖ **Thunderstorm accompanied with lightning & gusty winds(40-50kmph)** likely at isolated places over East Rajasthan and Uttarakhand.
- ❖ **Thunderstorm accompanied with lightning & gusty winds(30-40kmph)** likely at isolated places over Haryana, Chandigarh & Delhi, Punjab and West Uttar Pradesh.
- ❖ **Heat Wave** likely at isolated places over Bihar, Gangetic West Bengal, Jharkhand and Odisha.
- ❖ **Thunderstorm accompanied with Lightning** likely at isolated places over East Rajasthan, Haryana, Chandigarh & Delhi, Punjab and West Uttar Pradesh.
- ❖ **Heavy Rainfall** likely at isolated places over Arunachal Pradesh.

## 13<sup>th</sup> May (Day 7)

- ❖ **Thunderstorm accompanied with lightning & gusty winds(40-50kmph)** likely at isolated places over East Rajasthan and Uttarakhand.
- ❖ **Thunderstorm accompanied with lightning & gusty winds(30-40kmph)** likely at isolated places over Haryana, Chandigarh & Delhi, Punjab and West Uttar Pradesh.
- ❖ **Heat Wave** likely at isolated places over Bihar, Gangetic West Bengal, Jharkhand and Odisha.
- ❖ **Thunderstorm accompanied with Lightning** likely at isolated places over East Rajasthan, Haryana, Chandigarh & Delhi, Punjab and West Uttar Pradesh.
- ❖ **Heavy Rainfall** likely at isolated places over Arunachal Pradesh.





- Action may be taken based on **ORANGE AND RED** COLOUR warnings.
- Vulnerable regions likely urban and hilly areas action may be initiated for heavy rainfall warning.
- As the lead period increases forecast accuracy decreases.



Table-1

7 Days Rainfall Forecast								
S. No.	Subdivision	07-May	08-May	09-May	10-May	11-May	12-May	13-May
		Day 1	Day 2	Day 3	Day 4	Day 5	Day 6	Day 7
1	ANDAMAN & NICOBAR ISLANDS	FWS	SCT	FWS	FWS	WS	WS	WS
2	ARUNACHAL PRADESH	WS	FWS	SCT	FWS	WS	WS	WS
3	ASSAM & MEGHALAYA	WS	FWS	FWS	WS	WS	WS	WS
4	NAGALAND, MANIPUR, MIZORAM & TRIPURA	FWS	SCT	SCT	SCT	SCT	SCT	SCT
5	SUB-HIMALAYAN WEST BENGAL & SIKKIM	FWS	SCT	SCT	FWS	FWS	FWS	FWS
6	GANGETIC WEST BENGAL	ISOL	DRY	DRY	DRY	ISOL	ISOL	ISOL
7	ODISHA	ISOL	ISOL	ISOL	ISOL	ISOL	ISOL	ISOL
8	JHARKHAND	DRY	DRY	DRY	DRY	DRY	DRY	DRY
9	BIHAR	ISOL	DRY	DRY	DRY	ISOL	ISOL	ISOL
10	EAST UTTAR PRADESH	ISOL	ISOL	DRY	DRY	ISOL	ISOL	ISOL
11	WEST UTTAR PRADESH	ISOL	ISOL	ISOL	ISOL	SCT	SCT	SCT
12	UTTARAKHAND	FWS	FWS	SCT	SCT	FWS	FWS	FWS
13	HARYANA CHANDIGARH & DELHI	ISOL	ISOL	ISOL	SCT	SCT	ISOL	ISOL
14	PUNJAB	ISOL	ISOL	ISOL	SCT	SCT	ISOL	ISOL
15	HIMACHAL PRADESH	FWS	FWS	FWS	SCT	SCT	SCT	SCT
16	JAMMU & KASHMIR AND LADAKH	ISOL	ISOL	SCT	FWS	SCT	SCT	SCT
17	WEST RAJASTHAN	ISOL	ISOL	ISOL	ISOL	ISOL	ISOL	ISOL
18	EAST RAJASTHAN	SCT	SCT	ISOL	ISOL	ISOL	ISOL	ISOL
19	WEST MADHYA PRADESH	SCT	ISOL	ISOL	ISOL	ISOL	ISOL	ISOL
20	EAST MADHYA PRADESH	ISOL	ISOL	ISOL	ISOL	ISOL	ISOL	ISOL
21	GUJARAT REGION	WS	WS	FWS	SCT	SCT	ISOL	ISOL
22	SAURASHTRA & KUTCH	WS	WS	FWS	SCT	SCT	ISOL	ISOL
23	KONKAN & GOA	ISOL	ISOL	ISOL	ISOL	ISOL	ISOL	ISOL
24	MADHYA MAHARASHTRA	ISOL	ISOL	ISOL	ISOL	ISOL	SCT	SCT
25	MARATHAWADA	ISOL	ISOL	ISOL	ISOL	ISOL	ISOL	ISOL
26	VIDARBHA	ISOL	ISOL	ISOL	ISOL	ISOL	ISOL	ISOL
27	CHHATTISGARH	ISOL	ISOL	ISOL	ISOL	ISOL	ISOL	ISOL
28	COASTAL ANDHRA PRADESH & YANAM	SCT	ISOL	ISOL	ISOL	ISOL	ISOL	ISOL
29	TELANGANA	SCT	ISOL	ISOL	ISOL	SCT	SCT	SCT
30	RAYALASEEMA	SCT	ISOL	ISOL	ISOL	ISOL	ISOL	ISOL
31	TAMILNADU PUDUCHERRY & KARAIKAL	ISOL	ISOL	ISOL	ISOL	ISOL	ISOL	ISOL
32	COASTAL KARNATAKA	ISOL	ISOL	ISOL	SCT	SCT	SCT	SCT
33	NORTH INTERIOR KARNATAKA	ISOL	ISOL	ISOL	SCT	SCT	SCT	SCT
34	SOUTH INTERIOR KARNATAKA	ISOL	ISOL	ISOL	SCT	SCT	SCT	SCT
35	KERALA & MAHE	SCT	SCT	SCT	SCT	SCT	SCT	SCT
36	LAKSHADWEEP	SCT	SCT	DRY	DRY	DRY	DRY	DRY

• As the lead period increases forecast accuracy decreases.

### Impact expected and action suggested due to isolated thunderstorm with lightning/gusty & Squally winds & Hailstorm over

- ✓ **Thundersquall (wind speed reaching 50-60 kmph gusting to 70 kmph)** over East Rajasthan on 07<sup>th</sup>; Gujarat State on 07<sup>th</sup> & 08<sup>th</sup>; Madhya Maharashtra, Marathawada, West Madhya Pradesh & Assam & Meghalaya, East Madhya Pradesh on 07<sup>th</sup> May.
- ✓ **Isolated hailstorm** activity over Uttarakhand, Madhya Maharashtra & Marathawada, Madhya Pradesh on 07<sup>th</sup> May.

#### Impact expected:

- Breaking of tree branches, uprooting of large avenue trees. Large dead limbs blown from trees. Damage to Standing crops.
- Minor to Major damage to banana and papaya trees.
- Minor to major damage to power and communication lines due to breaking of branches.
- Strong wind/hail may damage plantation, horticulture and standing crops.
- Hail may injure people and cattle at open places.
- Partial damage to vulnerable structures due to strong winds.
- Minor damage to kutcha houses/walls and huts.
- Loose objects may fly.

#### Action suggested:

- People are advised to keep a watch on the weather for worsening conditions and be ready to move to safer places accordingly.
- Stay indoors, close windows & doors and avoid travel if possible.
- Take safe shelters; do not take shelter under trees.
- Do not lie on concrete floors and do not lean against concrete walls.
- Unplug electrical/ electronic appliances.
- Immediately get out of water bodies.
- Keep away from all the objects that conduct electricity.

### Impact & Action Suggested due to heavy to very heavy rainfall over Gujarat State on 06<sup>th</sup> May.

#### Impact Expected

- ❖ Localized Flooding of roads, water logging in low lying areas and closure of underpasses mainly in urban areas of the above region.
- ❖ Occasional reduction in visibility due to heavy rainfall.
- ❖ Disruption of traffic in major cities due to water logging in roads leading to increased travel time.
- ❖ Minor damage to kutcha roads.
- ❖ Possibilities of damage to vulnerable structure.
- ❖ Localized Landslides/Mudslides
- ❖ Damage to horticulture and standing crops in some areas due to inundation.
- ❖ It may lead to riverine flooding in some river catchments (for riverine flooding please visit Web page of CWC).

#### Action Suggested

- ❖ Check for traffic congestion on your route before leaving for your destination.
- ❖ Follow any traffic advisories that are issued in this regard.
- ❖ Avoid going to areas that face the water logging problems often.
- ❖ Avoid staying in vulnerable structure.

### Agromet advisories for likely impact of Hailstorm / Heavy Rainfall / Gusty Winds / Heat Wave

- In Arunachal Pradesh, Assam & Meghalaya, Nicobar Island, Sub Himalayan West Bengal & Sikkim, Bihar, Uttarakhand, East Rajasthan and Gujarat make provision to drain out excess water from standing crop and vegetable fields.
- In Himachal Pradesh, Uttarakhand, Madhya Pradesh, Madhya Maharashtra, Marathwada and Gujrat, use hail nets and hail caps to prevent mechanical damage in vegetables and orchards due to the possibility of hailstorms.
- Shift the harvested produce in safer places or cover the produce with tarpaulin sheets in the fields. Tie the harvested crops properly and cover them to minimise the risk of displacement due to strong surface winds.
- To protect standing crops, vegetables and orchards from the adverse effects of heat waves and high temperatures, apply light and frequent irrigation in the evening.
- Provide mechanical support to horticultural crops and staking to vegetables to avoid lodging.

### Livestock / Poultry / Fishery

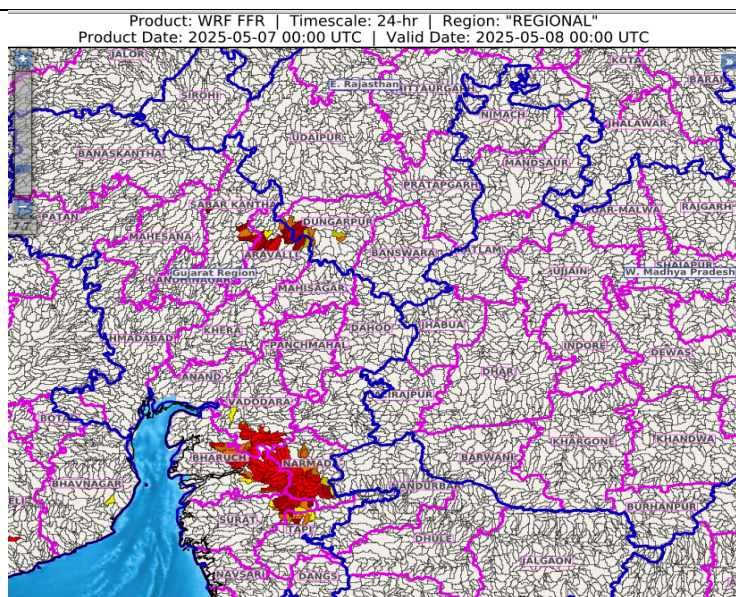
- Keep the animals inside the shed during heavy rainfall / hailstorm and provide them balanced feed.
- Store feed and fodder in a safe place to prevent spoilage.
- To reduce the effect of heat wave/high temperature, cover the roof of poultry sheds with grass. Also, provide clean, hygienic and plenty of drinking water to animals.
- Construct an outlet with proper netting around the ponds to drain out excess water, thereby preventing fish from escaping in case of overflow.

### Flash Flood Guidance

#### **24 hours Outlook for the Flash Flood Risk (FFR) till 0530 IST of 08-05-2025 :**

**Low flash flood risk** likely over few watersheds & neighbourhoods of following Met Sub-divisions during next 24 hours.  
**Gujarat Region** - Aravalli, Bharuch, Narmada, Sabar Kantha, Surat, Tapi and Vadodara districts.

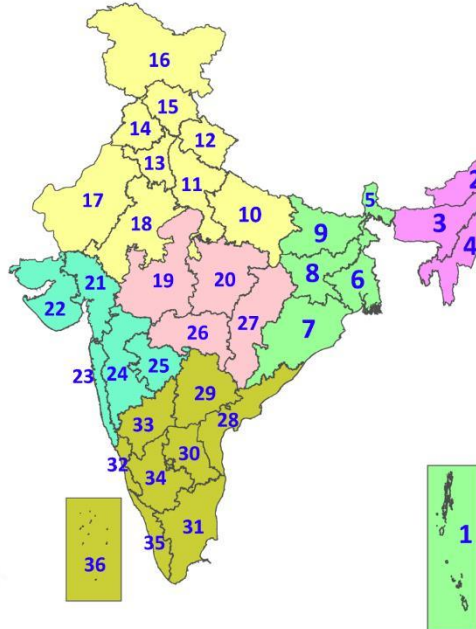
Surface runoff/ Inundation may occur at some fully saturated soils & low-lying areas over Area of Concern (AoC) as shown in map due to expected rainfall occurrence in next 24 hours.





## LEGENDS

1. अंडमान और निकोबार द्वीपसमूह
2. अरुणाचल प्रदेश
3. असम और मेघालय
4. नागालैंड, मणिपुर, मिजोरम और त्रिपुरा
5. उप-हिमालयी पश्चिम बंगाल और सिक्किम
6. गंगीय पश्चिम बंगाल
7. ओडिशा
8. झारखंड
9. बिहार
10. पूर्वी उत्तर प्रदेश
11. पश्चिम उत्तर प्रदेश
12. उत्तराखंड
13. हरियाणा, चंडीगढ़ और दिल्ली
14. पंजाब
15. हिमाचल प्रदेश
16. जम्मू और कश्मीर और लद्दाख
17. पश्चिम राजस्थान
18. पूर्वी राजस्थान
19. पश्चिम मध्य प्रदेश
20. पूर्वी मध्य प्रदेश
21. गुजरात
22. सौराष्ट्र
23. कोंकण और गोवा
24. मध्य महाराष्ट्र
25. मराठवाड़ा
26. विदर्भ
27. छत्तीसगढ़
28. तटीय आंध्र प्रदेश और यनम
29. तेलंगाना
30. रायलसीमा
31. तमिलनाडु, पुडुचेरी और कराईकल
32. तटीय कर्नाटक
33. आंतरिक उत्तरी कर्नाटक
34. आंतरिक दक्षिणी कर्नाटक
35. केरल और माहे
36. लक्षद्वीप



1. Andaman & Nicobar Islands
2. Arunachal Pradesh
3. Assam & Meghalaya
4. Nagaland, Manipur, Mizoram & Tripura
5. Sub-Himalayan West Bengal & Sikkim
6. Gangetic West Bengal
7. Odisha
8. Jharkhand
9. Bihar
10. East Uttar Pradesh
11. West Uttar Pradesh
12. Uttarakhand
13. Haryana, Chandigarh & Delhi
14. Punjab
15. Himachal Pradesh
16. Jammu & Kashmir and Ladakh
17. West Rajasthan
18. East Rajasthan
19. West Madhya Pradesh
20. East Madhya Pradesh
21. Gujarat
22. Saurashtra
23. Konkan & Goa
24. Madhya Maharashtra
25. Marathwada
26. Vidarbha
27. Chhattisgarh
28. Coastal Andhra Pradesh & Yanam
29. Telangana
30. Rayalaseema
31. Tamilnadu, Puducherry & Karaikal
32. Coastal Karnataka
33. North Interior Karnataka
34. South Interior Karnataka
35. Kerala & Mahe
36. Lakshadweep

## SPATIAL DISTRIBUTION (% of Stations reporting)

% Stations	Category	% Stations	Category
76-100	Widespread (WS/Most Places)	26-50	Scattered (SCT/A Few Places)
51-75	Fairly Widespread (FWS/Many Places)	1-25	Isolated (ISOL)



Fog



Heavy Snow



Cold Wave



Heavy Rain



Dust Storm



Cold Day



Very Heavy Rain



Heat Wave



Ground Frost



Extremely Heavy Rain



Warm Night



Thunder & Lightning



Hot Day



Hailstorm



Hot & Humid



Dust Raising Winds



Strong Surface Winds

### COLOUR CODED WARNING

No Warning (No Action)

Watch (Be Aware)

Alert (Be Prepared To Take Action)

Warning (Take Action)

### Probabilistic Forecast

Terms	Probability of Occurrence (%)
Unlikely	< 25
Likely	25 - 50
Very Likely	50 - 75
Most Likely	> 75

### DEFINITION/CRITERIA

#### Rain/ Snow \*

Heavy: 64.5 to 115.5 mm/cm \*

Very Heavy: 115.6 to 204.4 mm/cm \*

Extremely Heavy: > 204.4 mm/cm \*

#### Heat Wave

When maximum temperature of a station reaches  $\geq 40^{\circ}\text{C}$  for plains and  $\geq 30^{\circ}\text{C}$  for hilly regions

(a) Based on Departure from normal

Heat Wave: Maximum Temperature Departure from normal  $4.5^{\circ}\text{C}$  to  $6.4^{\circ}\text{C}$ .

Severe Heat Wave: Maximum Temperature Departure from normal  $\geq 6.5^{\circ}\text{C}$

(b). Based on Actual maximum temperature

Heat Wave: When actual maximum temperature  $\geq 45^{\circ}\text{C}$ .

Severe Heat Wave: When actual maximum temperature  $\geq 47^{\circ}\text{C}$

(c). Criteria for heat wave for coastal stations

When maximum temperature departure is  $> 4.5^{\circ}\text{C}$  from normal. Heat Wave may be described provided maximum temperature  $\geq 37^{\circ}\text{C}$

#### Warm Night

When maximum temperature remains  $40^{\circ}\text{C}$

Warm Night: When minimum temperature departure  $4.5^{\circ}\text{C}$  to  $6.4^{\circ}\text{C}$ .

Severe Warm Night: When minimum temperature departure  $> 6.4^{\circ}\text{C}$ .

#### Cold Wave

When minimum temperature of a station  $\leq 10^{\circ}\text{C}$  for plains and  $\leq 0^{\circ}\text{C}$  for hilly regions.

(a). Based on departure

Cold Wave: Minimum Temperature Departure from normal  $-4.5^{\circ}\text{C}$  to  $-6.4^{\circ}\text{C}$ .

Severe Cold Wave: Minimum Temperature Departure from normal  $\leq -6.5^{\circ}\text{C}$

(b) Based on actual Minimum Temperature (for Plains only)

Cold Wave : When Minimum Temperature is  $\leq 4.0^{\circ}\text{C}$

Severe Cold Wave: When Minimum Temperature is  $\leq 2.0^{\circ}\text{C}$

(c) For Coastal Stations

When Minimum Temperature departure is  $\leq -4.5^{\circ}\text{C}$  & actual Minimum Temperature is  $\leq 15^{\circ}\text{C}$

#### Cold Day

When minimum temperature of a station  $\leq 10^{\circ}\text{C}$  for plains and  $\leq 0^{\circ}\text{C}$  for hilly regions

Based on departure

Cold Day: Maximum Temperature Departure from normal  $-4.5^{\circ}\text{C}$  to  $-6.4^{\circ}\text{C}$ .

Severe Cold Day: Maximum Temperature Departure from normal  $\leq -6.5^{\circ}\text{C}$

#### Fog

Phenomenon of small droplets suspended in air and the horizontal visibility  $< 1\text{km}$

Moderate Fog: When the visibility between 500-200 metres

Dense Fog: when the visibility between 50- 200 metres

Very Dense Fog: when the visibility  $< 50$  metres

#### Thunderstorm

Sudden electrical discharges manifested by a flash of light (Lightning) and a sharp rumbling sound (thunder)

#### Dust/Sand Storm

An ensemble of particles of dust or sand energetically lifted to great heights by a strong and turbulent wind.

#### Frost

Ice deposits on ground

Air temperature  $\leq 4^{\circ}\text{C}$  ( over Plains)

#### Squall

A strong wind that rises suddenly, lasts for atleast 1 minute.

Moderate: Wind speed 52-61 kmph

Severe: Wind speed 62-87 kmph

Very Severe: Wind speed  $> 87$  kmph

#### Sea State

Effect of various waves in the sea over specific area

Rough to very rough: Wind speed 41-62 kmph (22-33 knots) & Wave height 2.5-6 metre

High to very high: Wind speed 63-117 kmph ( 34-63 knots) & Wave height 6-14 metre

Phenomenal: Wind speed  $> 117$  kmph ( $> 63$  knots) & Wave height  $> 14$  metre

#### Cyclone

Cyclonic Storm: Wind speed 62-87 kmph (34-47 knots)

Severe Cyclonic Storm: Wind speed 88-117 kmph (48-63 knots)

Very Severe Cyclonic Storm: Wind speed 118-165 kmph (64 - 89 knots)

Extremely Severe Cyclonic Storm: Wind speed 166-220 kmph (90 -119 knots)

Super Cyclone Storm: Wind speed  $> 220$  kmph ( $> 119$  knots)

\* Red colour warning does not mean "Red Alert", Red colour warning means "Take Action".

Forecast and Warning for any day is valid from 0830 hours IST of day till 0830 hours IST of next day.

For more details, kindly visit <https://mausam.imd.gov.in> or contact: 011-2434-4599

(Service to the Nation since 1875)

**Hot and Humid:** When maximum temperatures remains  $3^{\circ}\text{C}$  above normal along with the above normal relative humidity.