

Tuesday, June 03, 2025
Time of Issue: 1245 hours IST
(MID-DAY)

All India Impact Based Weather Warning Bulletin

Weather Warnings for next 7 days is given below:

(Graphics for warnings & rainfall distribution (Table 1) are given below the text:

03rd June (Day 1)

- ❖ **Heavy to Very Heavy Rainfall** very likely at isolated places over Assam & Meghalaya and Nagaland, Manipur, Mizoram and Tripura.
- ❖ **Heavy Rainfall** very likely at isolated places over Arunachal Pradesh, Coastal Karnataka, Haryana, Chandigarh & Delhi, Kerala & Mahe, Konkan & Goa, Rajasthan, Sub Himalayan West Bengal & Sikkim, Uttarakhand and West Uttar Pradesh.
- ❖ **Thunderstorm accompanied with Hailstorm** very likely at isolated places over Himachal Pradesh.
- ❖ **Thundersquall with wind speed reaching(50-60kmph)** very likely at isolated places over Bihar, Haryana, Chandigarh & Delhi, Himachal Pradesh, Punjab, Rajasthan, Uttar Pradesh and West Madhya Pradesh.
- ❖ **Thunderstorm accompanied with lightning & gusty winds(40-50kmph)** very likely at isolated places over Assam & Meghalaya, Chhattisgarh, East Madhya Pradesh, Jharkhand, North Interior Karnataka, Sub Himalayan West Bengal & Sikkim and Uttarakhand.
- ❖ **Thunderstorm accompanied with lightning & gusty winds(30-40kmph)** very likely at isolated places over Andhra Pradesh, Gangetic West Bengal, Jammu-Kashmir-Ladakh-Gilgit-Baltistan-Muzaffarabad, Kerala & Mahe, Nagaland, Manipur, Mizoram and Tripura, South Interior Karnataka and Telangana.
- ❖ **Thunderstorm accompanied with Lightning** very likely at isolated places over Arunachal Pradesh and Tamil Nadu Puducherry & Karaikal.
- ❖ **Dust Storm** very likely at isolated places over West Rajasthan.
- ❖ **Heat Wave conditions** very likely at isolated places over Gangetic West Bengal and Odisha.
- ❖ **Hot and Humid weather** very likely at isolated places over Coastal Andhra Pradesh, Gangetic West Bengal, Odisha and Tamil Nadu Puducherry & Karaikal.
- ❖ **Squally wind with speed 45 kmph to 55 kmph gusting to 65 kmph** very likely to prevail along and off Somalia coast and adjoining parts of southwest Arabian Sea & westcentral Arabian Sea, over some western parts of westcentral Arabian Sea; **Squally weather with wind speed 35 kmph to 45 kmph gusting to 55 kmph** prevailing over some parts of southwest and many parts of central Arabian Sea and adjoining parts of southeast Arabian Sea, over Lakshadweep area, along and off Kerala, Karnataka coast, over Gulf of Mannar and adjoining Comorin area, over some parts of central Bay of Bengal and adjoining parts of north Bay of Bengal. Fisherman are not advised not to venture into the sea.

04th June (Day 2)

- ❖ **Heavy to Very Heavy Rainfall** very likely at isolated places over Assam & Meghalaya.
- ❖ **Heavy Rainfall** very likely at isolated places over Arunachal Pradesh, Kerala & Mahe, Nagaland, Manipur, Mizoram and Tripura and Sub Himalayan West Bengal & Sikkim.
- ❖ **Thundersquall with wind speed reaching(50-60kmph)** very likely at isolated places over Bihar, Himachal Pradesh, Sub Himalayan West Bengal & Sikkim and West Madhya Pradesh.
- ❖ **Thunderstorm accompanied with lightning & gusty winds(40-50kmph)** very likely at isolated places over Assam & Meghalaya, Chhattisgarh, East Madhya Pradesh, Gangetic West Bengal, Nagaland, Manipur, Mizoram and Tripura, North Interior Karnataka, Rajasthan and Uttarakhand.
- ❖ **Thunderstorm accompanied with lightning & gusty winds(30-40kmph)** very likely at isolated places over Andhra Pradesh, Haryana, Chandigarh & Delhi, Kerala & Mahe, Punjab, South Interior Karnataka, Telangana, Uttar Pradesh and Vidarbha.
- ❖ **Thunderstorm accompanied with Lightning** very likely at isolated places over Arunachal Pradesh, Jharkhand, Madhya Maharashtra, Marathwada and Tamil Nadu Puducherry & Karaikal.
- ❖ **Heat Wave conditions** very likely at isolated places over Gangetic West Bengal and Odisha.
- ❖ **Hot and Humid weather** very likely at isolated places over Coastal Andhra Pradesh, Odisha and Tamil Nadu Puducherry & Karaikal.
- ❖ **Squally wind with speed 45 kmph to 55 kmph gusting to 65 kmph** very likely to prevail along and off Somalia coast and adjoining southwest Arabian Sea, westcentral Arabian Sea, over some western parts of westcentral Arabian Sea; **Squally weather with wind speed 35 kmph to 45 kmph gusting to 55 kmph** prevailing along and off Kerala, Karnataka coasts and adjoining Lakshadweep area, off north Tamil Nadu coast, over northern parts of central Bay of Bengal and adjoining parts of north Bay of Bengal and along. Fisherman are not advised not to venture into the sea.

05th June (Day 3)

- ❖ **Heavy Rainfall** very likely at isolated places over Arunachal Pradesh, Assam & Meghalaya and Nagaland, Manipur, Mizoram and Tripura.
- ❖ **Thunderstorm accompanied with lightning & gusty winds(40-50kmph)** very likely at isolated places over Chhattisgarh, East Rajasthan, Himachal Pradesh, Madhya Pradesh, North Interior Karnataka, Vidarbha and West Bengal & Sikkim.
- ❖ **Thunderstorm accompanied with lightning & gusty winds(30-40kmph)** very likely at isolated places over Andhra Pradesh, Bihar, South Interior Karnataka, Uttarakhand and West Rajasthan.
- ❖ **Thunderstorm accompanied with Lightning** very likely at isolated places over Assam & Meghalaya, Konkan & Goa, Madhya Maharashtra, Marathwada and Nagaland, Manipur, Mizoram and Tripura.
- ❖ **Heat Wave conditions** very likely at isolated places over Odisha.
- ❖ **Hot and Humid weather** very likely at isolated places over Coastal Andhra Pradesh and Odisha.
- ❖ **Squally wind with speed 45 kmph to 55 kmph gusting to 65 kmph** very likely to prevail along and off Somalia coast and adjoining southwest & westcentral Arabian Sea, over some western parts of westcentral Arabian Sea; **Squally weather with wind speed 35 kmph to 45 kmph gusting to 55 kmph** prevailing off north Tamil Nadu and south Andhra Pradesh coasts. Fisherman are not advised not to venture into the sea.

06th June (Day 4)

- ❖ **Thunderstorm accompanied with lightning & gusty winds(40-50kmph)** likely at isolated places over Chhattisgarh, East Rajasthan, Madhya Pradesh, North Interior Karnataka and Vidarbha.
- ❖ **Thunderstorm accompanied with lightning & gusty winds(30-40kmph)** likely at isolated places over Andhra Pradesh and South Interior Karnataka.
- ❖ **Thunderstorm accompanied with Lightning** likely at isolated places over Assam & Meghalaya, Madhya Maharashtra, Marathwada and Nagaland, Manipur, Mizoram and Tripura.
- ❖ **Heat Wave conditions** likely at isolated places over Odisha.
- ❖ **Hot and Humid weather** likely at isolated places over Odisha.
- ❖ **Squally wind with speed 45 kmph to 55 kmph gusting to 65 kmph** likely to prevail along and off Somalia coast and adjoining sea area. Fisherman are not advised not to venture into the sea.

07th June (Day 5)

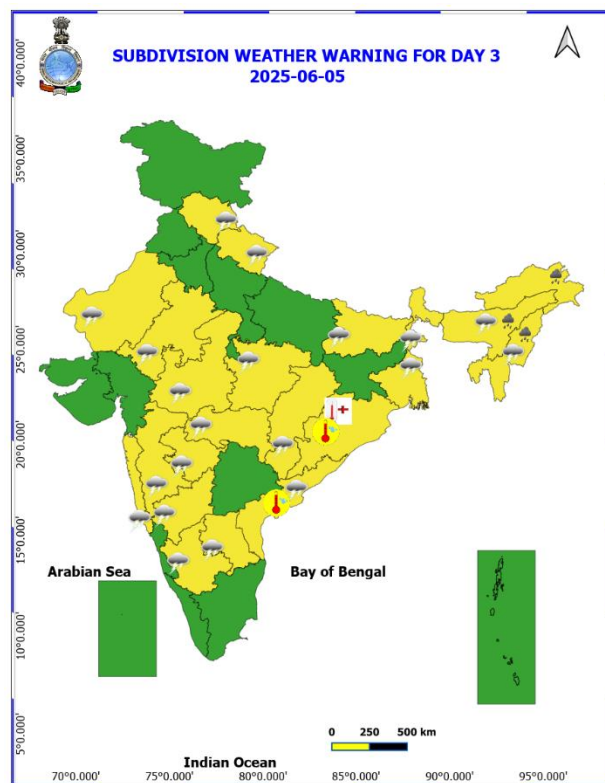
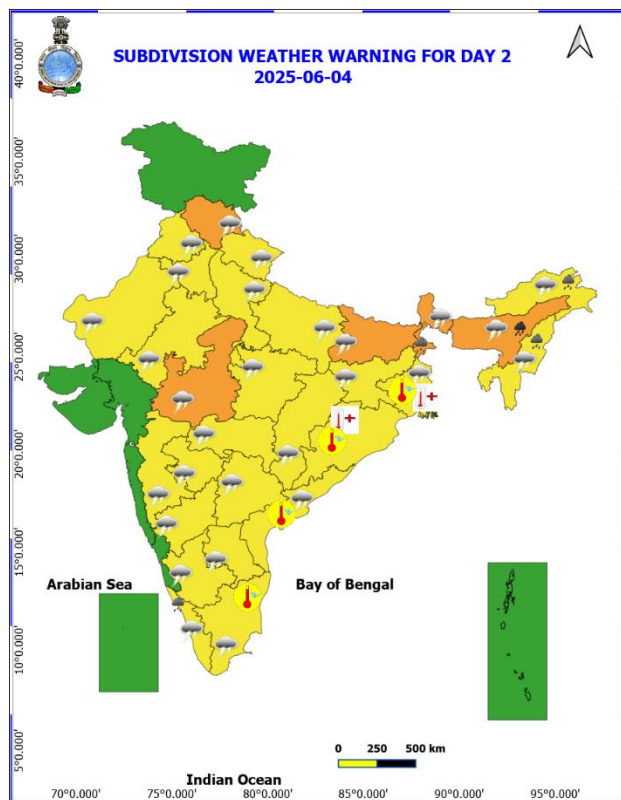
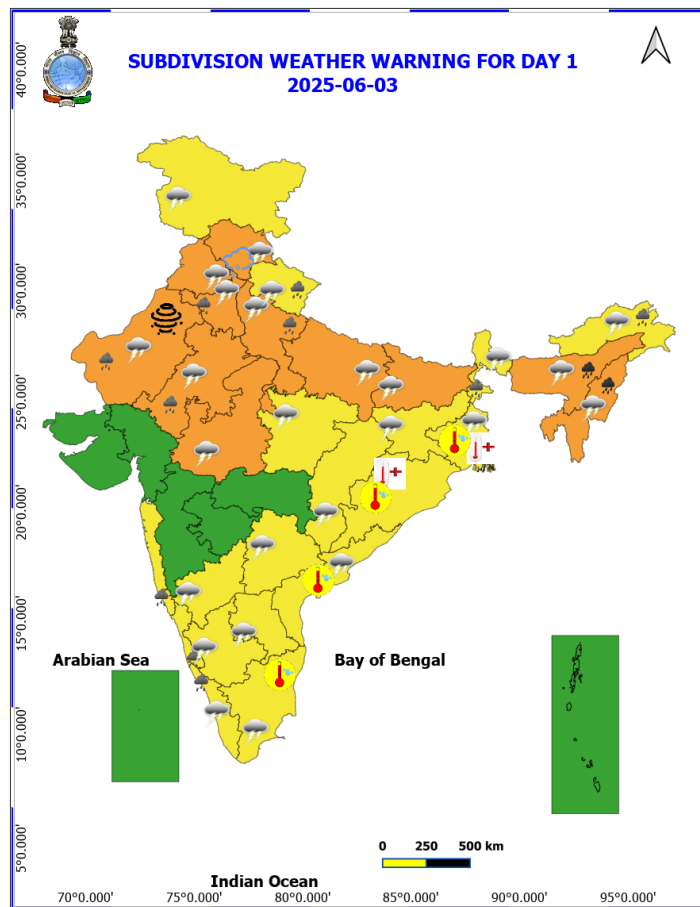
- ❖ **Thunderstorm accompanied with lightning & gusty winds(40-50kmph)** likely at isolated places over Chhattisgarh, Madhya Pradesh, North Interior Karnataka and Vidarbha.
- ❖ **Thunderstorm accompanied with lightning & gusty winds(30-40kmph)** likely at isolated places over Andhra Pradesh and South Interior Karnataka.
- ❖ **Thunderstorm accompanied with Lightning** likely at isolated places over Assam & Meghalaya, Madhya Maharashtra and Marathwada.
- ❖ **Squally wind with speed 45 kmph to 55 kmph gusting to 65 kmph** likely to prevail along and off Somalia coast and adjoining sea area. Fisherman are not advised not to venture into the sea.

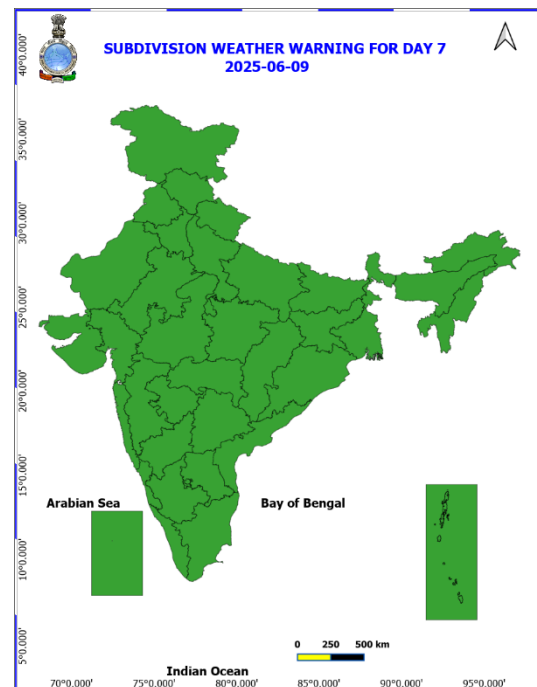
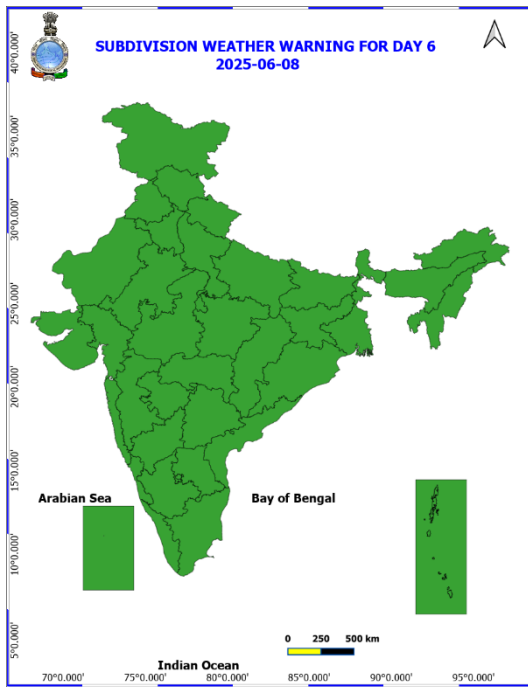
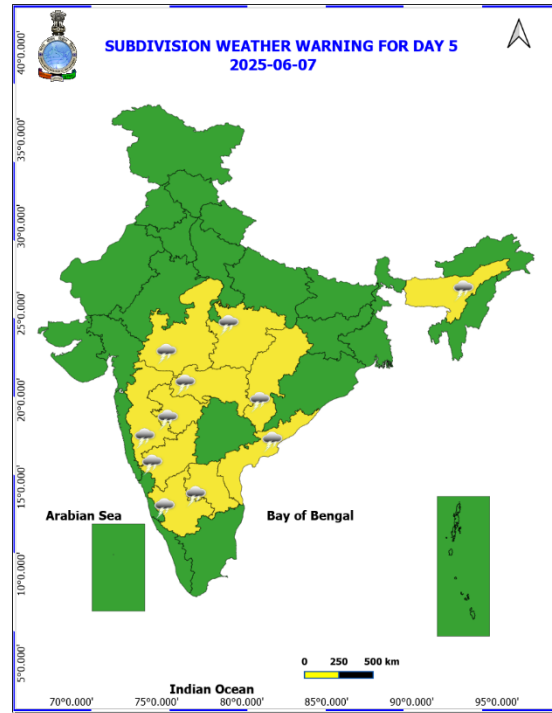
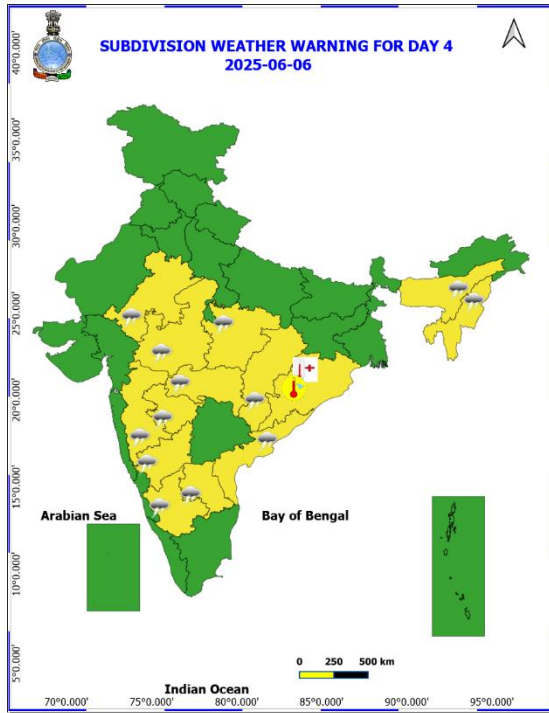
08th June (Day 6)

- ❖ **No Warning.**

09th June (Day 7)

- ❖ **No Warning.**





- Action may be taken based on **ORANGE** AND **RED** COLOUR warnings.
- Vulnerable regions likely urban and hilly areas action may be initiated for heavy rainfall warning.
- As the lead period increases forecast accuracy decreases.

Table-1

7 Days Rainfall Forecast								
S. No.	Subdivision	03-Jun	04-Jun	05-Jun	06-Jun	07-Jun	08-Jun	09-Jun
		Day 1	Day 2	Day 3	Day 4	Day 5	Day 6	Day 7
1	ANDAMAN & NICOBAR ISLANDS	WS	WS	FWS	SCT	SCT	SCT	SCT
2	ARUNACHAL PRADESH	WS	FWS	FWS	FWS	FWS	FWS	FWS
3	ASSAM & MEGHALAYA	WS	WS	FWS	FWS	FWS	FWS	FWS
4	NAGALAND, MANIPUR, MIZORAM & TRIPURA	WS	WS	FWS	SCT	SCT	SCT	SCT
5	SUB-HIMALAYAN WEST BENGAL & SIKKIM	WS	WS	WS	FWS	FWS	FWS	FWS
6	GANGETIC WEST BENGAL	SCT	SCT	SCT	ISOL	ISOL	ISOL	ISOL
7	ODISHA	ISOL	ISOL	ISOL	ISOL	ISOL	ISOL	ISOL
8	JHARKHAND	ISOL	ISOL	ISOL	ISOL	DRY	DRY	ISOL
9	BIHAR	ISOL	SCT	ISOL	DRY	DRY	ISOL	ISOL
10	EAST UTTAR PRADESH	SCT	ISOL	ISOL	DRY	DRY	DRY	DRY
11	WEST UTTAR PRADESH	SCT	ISOL	ISOL	DRY	DRY	DRY	DRY
12	UTTARAKHAND	FWS	SCT	ISOL	ISOL	DRY	DRY	DRY
13	HARYANA CHANDIGARH & DELHI	FWS	ISOL	ISOL	DRY	DRY	DRY	DRY
14	PUNJAB	FWS	ISOL	ISOL	DRY	DRY	DRY	DRY
15	HIMACHAL PRADESH	FWS	FWS	SCT	ISOL	DRY	DRY	DRY
16	JAMMU & KASHMIR AND LADAKH	FWS	SCT	ISOL	DRY	DRY	DRY	DRY
17	WEST RAJASTHAN	ISOL	ISOL	ISOL	DRY	DRY	DRY	DRY
18	EAST RAJASTHAN	SCT	SCT	ISOL	ISOL	ISOL	ISOL	DRY
19	WEST MADHYA PRADESH	SCT	SCT	ISOL	ISOL	ISOL	ISOL	ISOL
20	EAST MADHYA PRADESH	SCT	SCT	ISOL	ISOL	ISOL	ISOL	ISOL
21	GUJARAT REGION	SCT	SCT	SCT	ISOL	ISOL	ISOL	ISOL
22	SAURASHTRA & KUTCH	ISOL	ISOL	ISOL	ISOL	ISOL	ISOL	ISOL
23	KONKAN & GOA	FWS	SCT	ISOL	ISOL	ISOL	SCT	SCT
24	MADHYA MAHARASHTRA	ISOL	ISOL	ISOL	ISOL	ISOL	ISOL	ISOL
25	MARATHAWADA	ISOL	ISOL	ISOL	ISOL	ISOL	ISOL	ISOL
26	VIDARBHA	ISOL	ISOL	ISOL	ISOL	ISOL	ISOL	SCT
27	CHHATTISGARH	ISOL	ISOL	ISOL	ISOL	ISOL	ISOL	ISOL
28	COASTAL ANDHRA PRADESH & YANAM	ISOL	ISOL	ISOL	ISOL	ISOL	ISOL	ISOL
29	TELANGANA	ISOL	ISOL	ISOL	ISOL	ISOL	ISOL	ISOL
30	RAYALASEEMA	ISOL	ISOL	ISOL	ISOL	ISOL	ISOL	ISOL
31	TAMILNADU PUDUCHERRY & KARAIKAL	ISOL	ISOL	ISOL	ISOL	ISOL	ISOL	ISOL
32	COASTAL KARNATAKA	WS	WS	FWS	FWS	WS	WS	WS
33	NORTH INTERIOR KARNATAKA	ISOL	ISOL	ISOL	SCT	SCT	SCT	SCT
34	SOUTH INTERIOR KARNATAKA	SCT	SCT	SCT	SCT	SCT	SCT	SCT
35	KERALA & MAHE	WS	WS	FWS	SCT	SCT	SCT	SCT
36	LAKSHADWEEP	WS	WS	FWS	SCT	SCT	SCT	SCT

- As the lead period increases forecast accuracy decreases.

Impact & Action Suggested due to heavy to very heavy rainfall over Assam & Meghalaya on 03rd & 04th and Nagaland, Manipur, Mizoram & Tripura on 03rd June. (For Orange colour warning areas)

Impact Expected

- ❖ Localized Flooding of roads, water logging in low lying areas of the above region.
- ❖ Occasional reduction in visibility due to heavy rainfall.
- ❖ Minor damage to kutcha roads.
- ❖ Possibilities of damage to vulnerable structure.
- ❖ Localized Landslides/Mudslides
- ❖ Damage to horticulture and standing crops in some areas due to inundation.
- ❖ It may lead to riverine flooding in some river catchments (for riverine flooding please visit Web page of CWC).

Action Suggested

- ❖ Check for traffic congestion on your route before leaving for your destination.
- ❖ Follow any traffic advisories that are issued in this regard.
- ❖ Avoid going to areas that face the water logging problems often.
- ❖ Avoid staying in vulnerable structure.

Impact expected and action suggested due to isolated thunderstorm with lightning/gusty & Squally winds over

- ❖ **Thundersquall wind speed reaching 50-60 kmph gusting to 70 kmph** over likely over Punjab, Haryana Chandigarh & Delhi, Uttar Pradesh, Rajasthan on 03rd, Uttarakhand on 02nd and West Madhya Pradesh, Bihar, Himachal Pradesh on 03rd & 04th and Sub-Himalayan West Bengal & Sikkim on 04th June.

Impact expected:

- Minor to Major damage to banana and papaya trees.
- Strong wind/hail may damage plantation, horticulture and standing crops.
- Partial damage to vulnerable structures due to strong winds.
- Minor damage to kutcha houses/walls and huts.
- Loose objects may fly.

Action suggested:

- People are advised to keep a watch on the weather for worsening conditions and be ready to move to safer places accordingly.
- Stay indoors, close windows & doors and avoid travel if possible.
- Take safe shelters; do not take shelter under trees.
- Do not lie on concrete floors and do not lean against concrete walls.
- Unplug electrical/ electronic appliances.
- Immediately get out of water bodies.
- Keep away from all the objects that conduct electricity.

Agromet advisories for likely impact of Heavy Rainfall / Hailstorms / Gusty Winds / Heat Wave

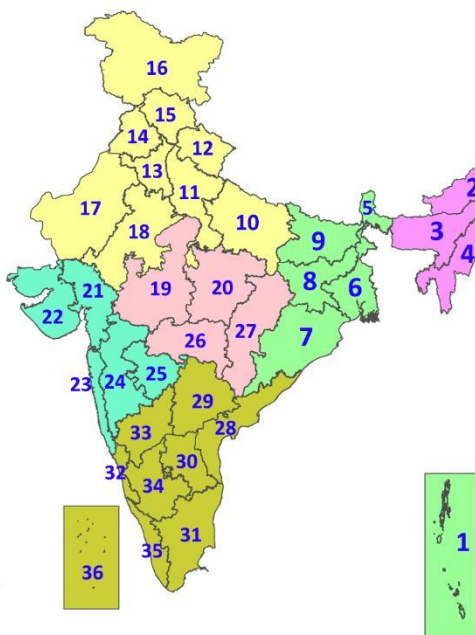
- Postpone transplanting of rice in **Arunachal Pradesh**; sowing of *Sali* rice and vegetables in **Assam**; sowing of finger millet, maize and black gram in **Manipur** and harvesting of rice in **Tripura**.
- Drain out excess water and ensure proper drainage in the rice nursery beds, fields of soybean, chilli, okra and other vegetables and in **Arunachal Pradesh**; rice, sesame, maize, sugarcane, ginger and turmeric in **Assam**; bottle gourd and French bean in **Meghalaya**; maize and upland rice in **Mizoram**; pre-*kharif* rice, soybean, finger millet, maize, black gram, vegetables and orchards in **Manipur**; cabbage, maize and orchards in **Nagaland**; rice fields, and *Aus* rice nurseries and vegetables.
- In **Himachal Pradesh**, use hail nets and hail caps to prevent mechanical damage in vegetables and orchards due to the possibility of hailstorms.
- Shift the harvested produce in safer places or cover the produce with tarpaulin sheets in the fields. Tie the harvested crops properly and cover them to minimise the risk of displacement due to strong surface winds.
- Provide mechanical support and propping to horticultural crops and staking to vegetables to avoid lodging.
- In **Gangetic West Bengal** and **Odisha**, apply light and frequent irrigation in the evening to protect standing crops, vegetables and orchards from the adverse effects of heat waves and high temperatures.

Livestock / Poultry / Fishery

- Keep the animals inside the shed during heavy rainfall / hailstorm and provide them balanced feed.
- Store feed and fodder in a safe place to prevent spoilage.
- Construct an outlet with proper netting around the ponds to drain out excess water, thereby preventing fish from escaping in case of overflow.
- To reduce the effect of heat wave/high temperature, cover the roof of poultry sheds with grass. Also, provide clean, hygienic and plenty of drinking water to animals.

LEGENDS

1. अंडमान और निकोबार द्वीपसमूह
2. अरुणाचल प्रदेश
3. असम और मेघालय
4. नागालैंड, मणिपुर, मिजोरम और त्रिपुरा
5. उप-हिमालयी पश्चिम बंगाल और सिक्किम
6. गंगीय पश्चिम बंगाल
7. ओडिशा
8. झारखंड
9. बिहार
10. पूर्वी उत्तर प्रदेश
11. पश्चिम उत्तर प्रदेश
12. उत्तराखंड
13. हरियाणा, चंडीगढ़ और दिल्ली
14. पंजाब
15. हिमाचल प्रदेश
16. जम्मू और कश्मीर और लद्दाख
17. पश्चिम राजस्थान
18. पूर्वी राजस्थान
19. पश्चिम मध्य प्रदेश
20. पूर्वी मध्य प्रदेश
21. गुजरात
22. सौराष्ट्र
23. कोंकण और गोवा
24. मध्य महाराष्ट्र
25. मराठवाड़ा
26. विदर्भ
27. छत्तीसगढ़
28. तटीय आंध्र प्रदेश और यनम
29. तेलंगाना
30. रायलसीमा
31. तमिलनाडु, पुडुचेरी और कराईकल
32. तटीय कर्नाटक
33. आंतरिक उत्तरी कर्नाटक
34. आंतरिक दक्षिणी कर्नाटक
35. केरल और माहे
36. लक्षद्वीप



1. Andaman & Nicobar Islands
2. Arunachal Pradesh
3. Assam & Meghalaya
4. Nagaland, Manipur, Mizoram & Tripura
5. Sub-Himalayan West Bengal & Sikkim
6. Gangetic West Bengal
7. Odisha
8. Jharkhand
9. Bihar
10. East Uttar Pradesh
11. West Uttar Pradesh
12. Uttarakhand
13. Haryana, Chandigarh & Delhi
14. Punjab
15. Himachal Pradesh
16. Jammu & Kashmir and Ladakh
17. West Rajasthan
18. East Rajasthan
19. West Madhya Pradesh
20. East Madhya Pradesh
21. Gujarat
22. Saurashtra
23. Konkan & Goa
24. Madhya Maharashtra
25. Marathwada
26. Vidarbha
27. Chhattisgarh
28. Coastal Andhra Pradesh & Yanam
29. Telangana
30. Rayalaseema
31. Tamilnadu, Puducherry & Karaikal
32. Coastal Karnataka
33. North Interior Karnataka
34. South Interior Karnataka
35. Kerala & Mahe
36. Lakshadweep

SPATIAL DISTRIBUTION (% of Stations reporting)

% Stations	Category	% Stations	Category
76-100	Widespread (WS/Most Places)	26-50	Scattered (SCT/A Few Places)
51-75	Fairly Widespread (FWS/Many Places)	1-25	Isolated (ISOL)



Fog



Heavy Snow



Cold Wave



Heavy Rain



Dust Storm



Cold Day



Very Heavy Rain



Heat Wave



Ground Frost



Extremely Heavy Rain



Warm Night



Thunder & Lightning



Hot Day



Hailstorm



Hot & Humid



Dust Raising Winds



Strong Surface Winds

COLOUR CODED WARNING

No Warning (No Action)

Watch (Be Aware)

Alert (Be Prepared To Take Action)

Warning (Take Action)

Probabilistic Forecast

Terms	Probability of Occurrence (%)
Unlikely	< 25
Likely	25 - 50
Very Likely	50 - 75
Most Likely	> 75

DEFINITION/CRITERIA

Rain/ Snow *

Heavy: 64.5 to 115.5 mm/cm *

Very Heavy: 115.6 to 204.4 mm/cm *

Extremely Heavy: > 204.4 mm/cm *

Heat Wave

When maximum temperature of a station reaches $\geq 40^{\circ}\text{C}$ for plains and $\geq 30^{\circ}\text{C}$ for hilly regions

(a) Based on Departure from normal

Heat Wave: Maximum Temperature Departure from normal 4.5°C to 6.4°C .

Severe Heat Wave: Maximum Temperature Departure from normal $\geq 6.5^{\circ}\text{C}$

(b). Based on Actual maximum temperature

Heat Wave: When actual maximum temperature $\geq 45^{\circ}\text{C}$.

Severe Heat Wave: When actual maximum temperature $\geq 47^{\circ}\text{C}$

(c). Criteria for heat wave for coastal stations

When maximum temperature departure is $> 4.5^{\circ}\text{C}$ from normal. Heat Wave may be described provided maximum temperature $\geq 37^{\circ}\text{C}$

Warm Night

When maximum temperature remains 40°C

Warm Night: When minimum temperature departure 4.5°C to 6.4°C .

Severe Warm Night: When minimum temperature departure $> 6.4^{\circ}\text{C}$.

Cold Wave

When minimum temperature of a station $\leq 10^{\circ}\text{C}$ for plains and $\leq 0^{\circ}\text{C}$ for hilly regions.

(a). Based on departure

Cold Wave: Minimum Temperature Departure from normal -4.5°C to -6.4°C .

Severe Cold Wave: Minimum Temperature Departure from normal $\leq -6.5^{\circ}\text{C}$

(b) Based on actual Minimum Temperature (for Plains only)

Cold Wave : When Minimum Temperature is $\leq 4.0^{\circ}\text{C}$

Severe Cold Wave: When Minimum Temperature is $\leq 2.0^{\circ}\text{C}$

(c) For Coastal Stations

When Minimum Temperature departure is $\leq -4.5^{\circ}\text{C}$ & actual Minimum Temperature is $\leq 15^{\circ}\text{C}$

Cold Day

When minimum temperature of a station $\leq 10^{\circ}\text{C}$ for plains and $\leq 0^{\circ}\text{C}$ for hilly regions

Based on departure

Cold Day: Maximum Temperature Departure from normal -4.5°C to -6.4°C .

Severe Cold Day: Maximum Temperature Departure from normal $\leq -6.5^{\circ}\text{C}$

Fog

Phenomenon of small droplets suspended in air and the horizontal visibility $< 1\text{km}$

Moderate Fog: When the visibility between 500-200 metres

Dense Fog: when the visibility between 50- 200 metres

Very Dense Fog: when the visibility < 50 metres

Thunderstorm

Sudden electrical discharges manifested by a flash of light (Lightning) and a sharp rumbling sound (thunder)

Dust/Sand Storm

An ensemble of particles of dust or sand energetically lifted to great heights by a strong and turbulent wind.

Frost

Ice deposits on ground

Air temperature $\leq 4^{\circ}\text{C}$ (over Plains)

Squall

A strong wind that rises suddenly, lasts for atleast 1 minute.

Moderate: Wind speed 52-61 kmph

Severe: Wind speed 62-87 kmph

Very Severe: Wind speed > 87 kmph

Sea State

Effect of various waves in the sea over specific area

Rough to very rough: Wind speed 41-62 kmph (22-33 knots) & Wave height 2.5-6 metre

High to very high: Wind speed 63-117 kmph (34-63 knots) & Wave height 6-14 metre

Phenomenal: Wind speed > 117 kmph (> 63 knots) & Wave height > 14 metre

Cyclone

Cyclonic Storm: Wind speed 62-87 kmph (34-47 knots)

Severe Cyclonic Storm: Wind speed 88-117 kmph (48-63 knots)

Very Severe Cyclonic Storm: Wind speed 118-165 kmph (64 - 89 knots)

Extremely Severe Cyclonic Storm: Wind speed 166-220 kmph (90 -119 knots)

Super Cyclone Strom: Wind speed > 220 kmph (> 119 knots)

* Red colour warning does not mean "Red Alert", Red colour warning means "Take Action".
Forecast and Warning for any day is valid from 0830 hours IST of day till 0830 hours IST of next day.
For more details, kindly visit <https://mausam.imd.gov.in> or contact: 011-2434-4599
(Service to the Nation since 1875)

Hot and Humid: When maximum temperatures remains 3°C above normal along with the above normal relative humidity.