

Thursday, June 05, 2025
Time of Issue: 1300 hours IST
(MID-DAY)

All India Impact Based Weather Warning Bulletin

Weather Warnings for next 7 days is given below:

(Graphics for warnings & rainfall distribution (Table 1) are given below the text:

05th June (Day 1)

- ❖ **Heavy to Very Heavy Rainfall** very likely at isolated places over Meghalaya.
- ❖ **Heavy Rainfall** very likely at isolated places over Assam, Arunachal Pradesh, Bihar, Mizoram and Tripura.
- ❖ **Thunderstorm accompanied with lightning & gusty winds(40-50kmph)** very likely at isolated places over Bihar, Chhattisgarh, Coastal Andhra Pradesh, East Uttar Pradesh, Jharkhand, Madhya Pradesh, Odisha, Rajasthan, Uttarakhand, Vidarbha and West Bengal & Sikkim.
- ❖ **Thunderstorm accompanied with lightning & gusty winds(30-40kmph)** very likely at isolated places over Assam & Meghalaya, Haryana, Chandigarh & Delhi, Himachal Pradesh, Interior Karnataka, Konkan & Goa, Madhya Maharashtra, Marathwada, Nagaland, Manipur, Mizoram and Tripura, Rayalaseema, Tamil Nadu Puducherry & Karaikal, Telangana and West Uttar Pradesh.
- ❖ **Thunderstorm accompanied with Lightning** very likely at isolated places over Arunachal Pradesh.
- ❖ **Hot and Humid weather** very likely at isolated places over Coastal Andhra Pradesh and Tamil Nadu Puducherry & Karaikal.
- ❖ **Squally wind with speed 45 kmph to 55 kmph gusting to 65 kmph** very likely to prevail along and off Somalia coast and adjoining parts of southwest Arabian Sea, some parts of westcentral Arabian Sea. Fisherman are not advised not to venture into the sea.

06th June (Day 2)

- ❖ **Heavy Rainfall** very likely at isolated places over Assam & Meghalaya.
- ❖ **Thunderstorm accompanied with lightning & gusty winds(40-50kmph)** very likely at isolated places over Chhattisgarh, East Rajasthan, Odisha and Vidarbha.
- ❖ **Thunderstorm accompanied with lightning & gusty winds(30-40kmph)** very likely at isolated places over Andhra Pradesh, Interior Karnataka, Konkan & Goa, Madhya Maharashtra, Madhya Pradesh, Marathwada, Nagaland, Manipur, Mizoram and Tripura, Tamil Nadu Puducherry & Karaikal and Telangana.
- ❖ **Thunderstorm accompanied with Lightning** very likely at isolated places over Arunachal Pradesh, Assam & Meghalaya and Kerala & Mahe.
- ❖ **Hot and Humid weather** very likely at isolated places over Odisha and Tamil Nadu Puducherry & Karaikal.
- ❖ **Squally wind with speed 45 kmph to 55 kmph gusting to 65 kmph** very likely to prevail along and off Somalia coast and adjoining southwest & westcentral Arabian Sea. Fisherman are not advised not to venture into the sea.

07th June (Day 3)

- ❖ **Thunderstorm accompanied with lightning & gusty winds(40-50kmph)** very likely at isolated places over Chhattisgarh, Coastal Andhra Pradesh and Maharashtra.
- ❖ **Thunderstorm accompanied with lightning & gusty winds(30-40kmph)** very likely at isolated places over Interior Karnataka, Madhya Pradesh, Rayalaseema and Tamil Nadu Puducherry & Karaikal.
- ❖ **Thunderstorm accompanied with Lightning** very likely at isolated places over Assam & Meghalaya, Kerala & Mahe and Nagaland, Manipur, Mizoram and Tripura.
- ❖ **Hot and Humid weather** very likely at isolated places over Odisha.
- ❖ **Squally wind with speed 45 kmph to 55 kmph gusting to 65 kmph** very likely to prevail along and off Somalia coast and adjoining southwest & westcentral Arabian Sea. Fisherman are not advised not to venture into the sea.

08th June (Day 4)

- ❖ **Thunderstorm accompanied with lightning & gusty winds(40-50kmph)** likely at isolated places over Chhattisgarh, Coastal Andhra Pradesh and Maharashtra.
- ❖ **Thunderstorm accompanied with lightning & gusty winds(30-40kmph)** likely at isolated places over Interior Karnataka and Tamil Nadu Puducherry & Karaikal.
- ❖ **Thunderstorm accompanied with Lightning** likely at isolated places over Assam & Meghalaya and Nagaland, Manipur, Mizoram and Tripura.
- ❖ **Heat Wave conditions** likely at isolated places over West Rajasthan.
- ❖ **Hot and Humid weather** likely at isolated places over Odisha.
- ❖ **Squally wind with speed 45 kmph to 55 kmph gusting to 65 kmph** likely to prevail along and off Somalia coast and adjoining southwest & westcentral Arabian Sea. Fisherman are not advised not to venture into the sea.

09th June (Day 5)

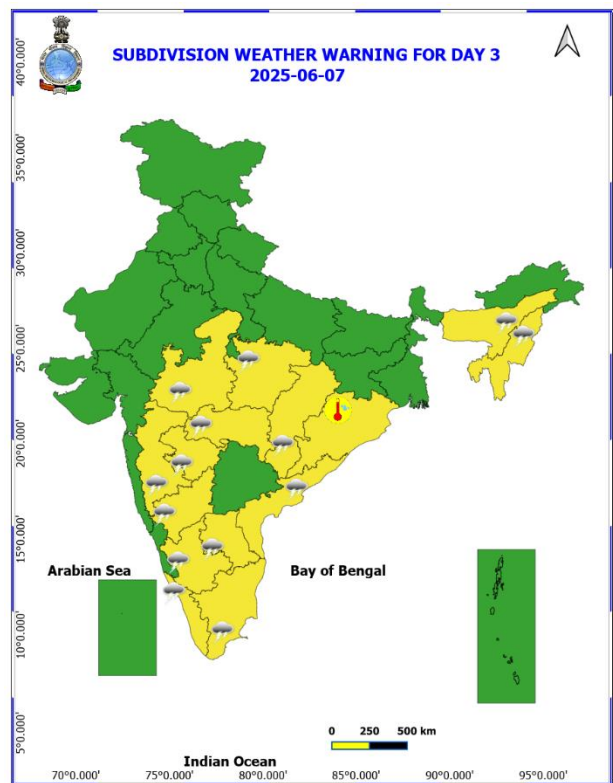
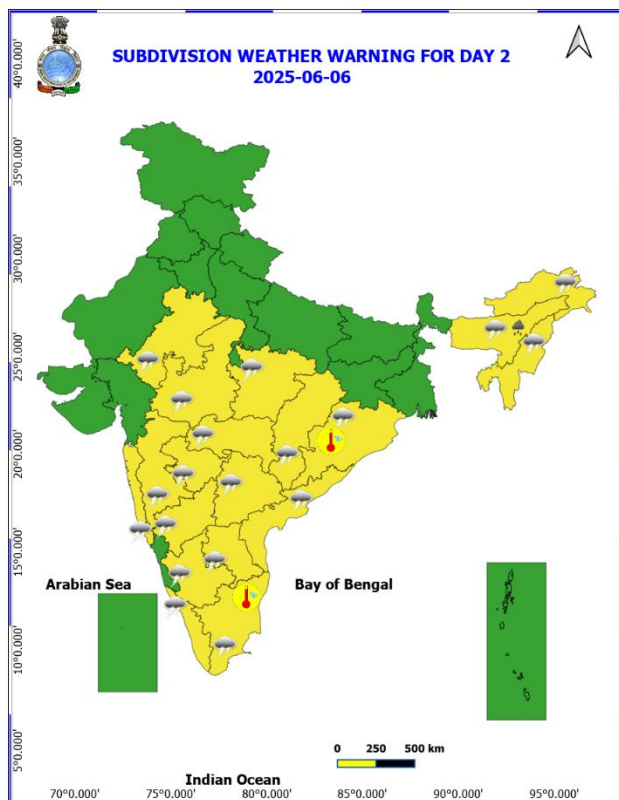
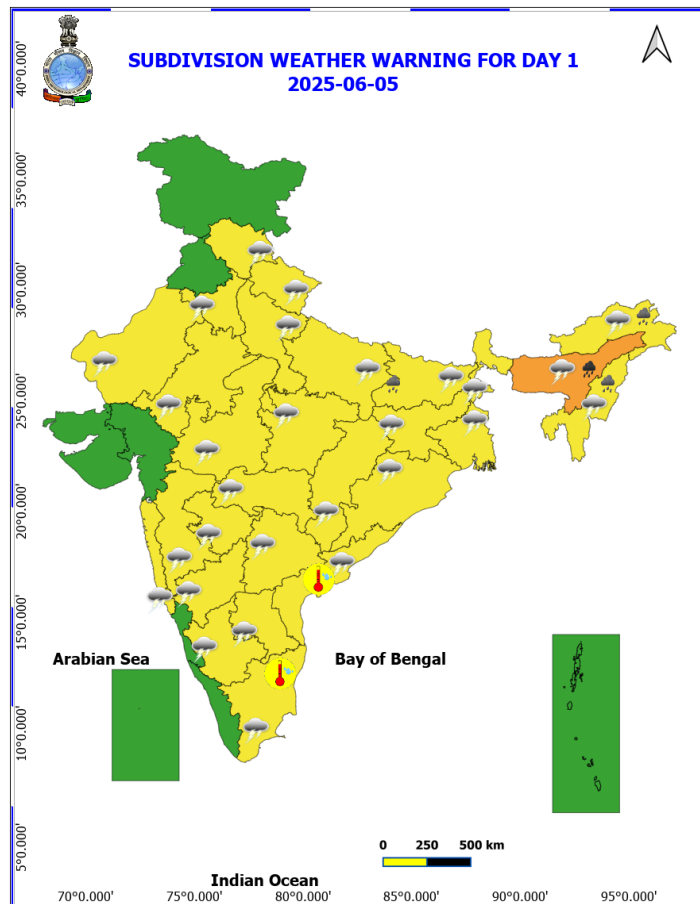
- ❖ **Heavy Rainfall** likely at isolated places over Assam & Meghalaya.
- ❖ **Thunderstorm accompanied with lightning & gusty winds(40-50kmph)** likely at isolated places over Chhattisgarh and Coastal Andhra Pradesh.
- ❖ **Thunderstorm accompanied with lightning & gusty winds(30-40kmph)** likely at isolated places over Interior Karnataka and Tamil Nadu Puducherry & Karaikal.
- ❖ **Thunderstorm accompanied with Lightning** likely at isolated places over Assam & Meghalaya and Nagaland, Manipur, Mizoram and Tripura.
- ❖ **Heat Wave conditions** likely at isolated places over West Rajasthan.
- ❖ **Hot and Humid weather** likely at isolated places over Odisha.
- ❖ **Squally wind with speed 45 kmph to 55 kmph gusting to 65 kmph** likely to prevail along and off Somalia coast and adjoining southwest & westcentral Arabian Sea; **Squally weather with wind speed 35 - 45 kmph gusting to 55 kmph** to prevail over many parts of south Bay of Bengal. Fisherman are not advised not to venture into the sea.

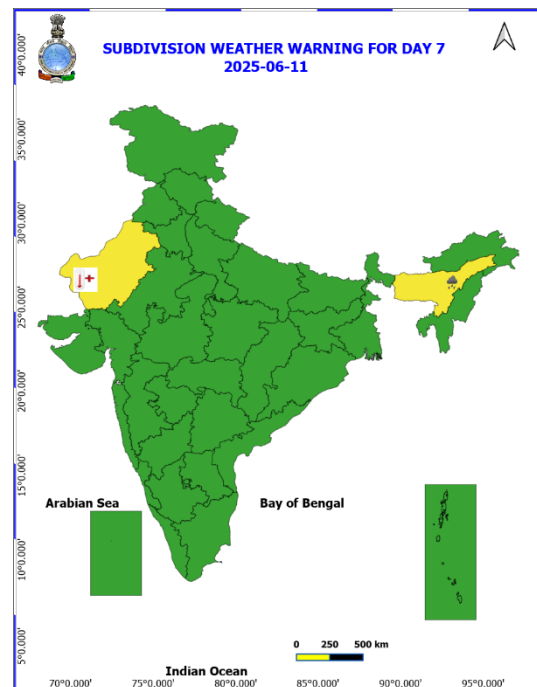
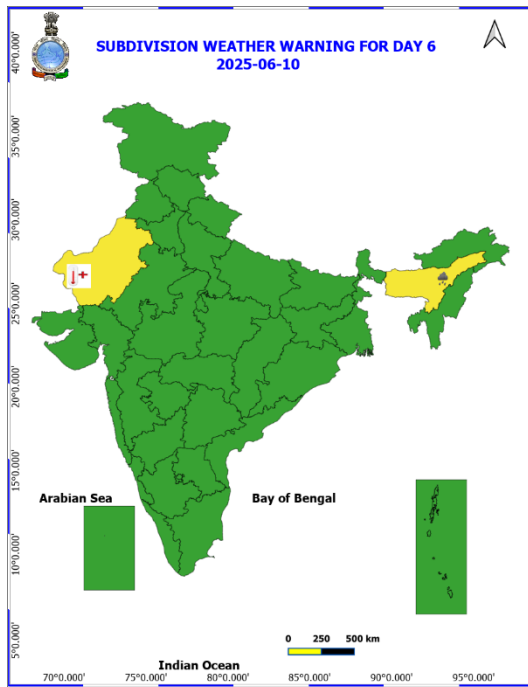
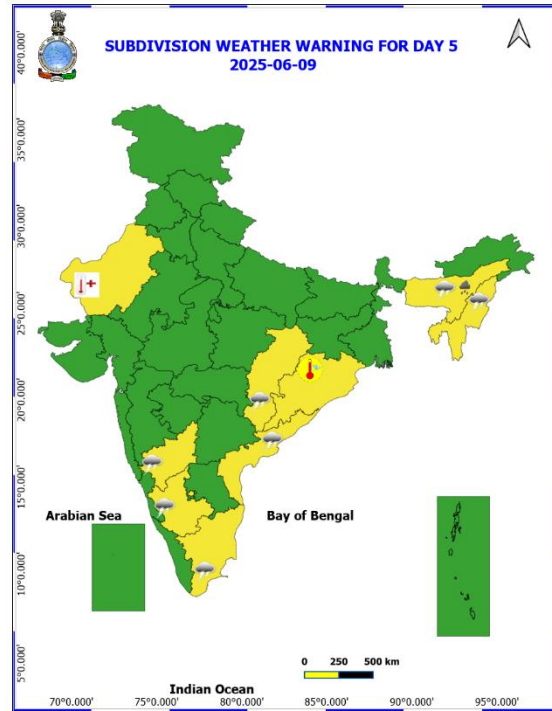
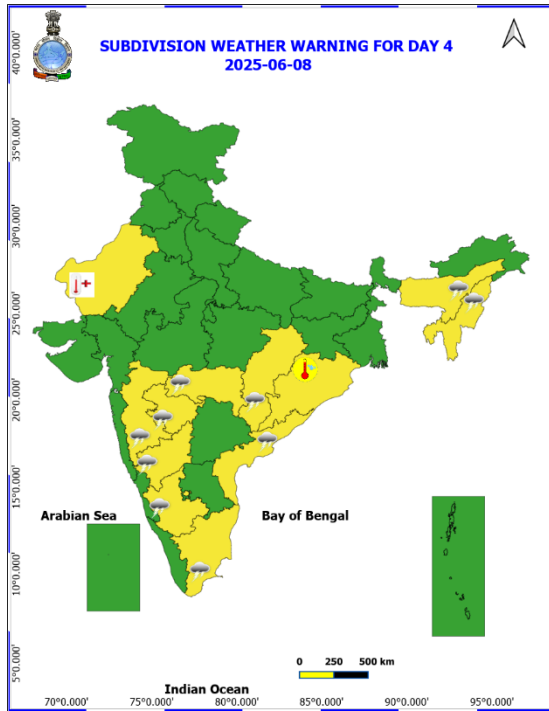
10th June (Day 6)

- ❖ **Heavy Rainfall** likely at isolated places over Assam & Meghalaya.
- ❖ **Heat Wave conditions** likely at isolated places over West Rajasthan.

11th June (Day 7)

- ❖ **Heavy Rainfall** likely at isolated places over Assam & Meghalaya.
- ❖ **Heat Wave conditions** likely at isolated places over West Rajasthan.





- Action may be taken based on **ORANGE** AND **RED** COLOUR warnings.
- Vulnerable regions likely urban and hilly areas action may be initiated for heavy rainfall warning.
- As the lead period increases forecast accuracy decreases.

Table-1

7 Days Rainfall Forecast								
S. No.	Subdivision	05-Jun	06-Jun	07-Jun	08-Jun	09-Jun	10-Jun	11-Jun
		Day 1	Day 2	Day 3	Day 4	Day 5	Day 6	Day 7
1	ANDAMAN & NICOBAR ISLANDS	FWS	FWS	WS	WS	WS	WS	WS
2	ARUNACHAL PRADESH	FWS	FWS	FWS	FWS	FWS	FWS	FWS
3	ASSAM & MEGHALAYA	WS	FWS	SCT	SCT	FWS	WS	WS
4	NAGALAND, MANIPUR, MIZORAM & TRIPURA	FWS	SCT	SCT	SCT	FWS	FWS	FWS
5	SUB-HIMALAYAN WEST BENGAL & SIKKIM	FWS	FWS	SCT	SCT	SCT	SCT	FWS
6	GANGETIC WEST BENGAL	FWS	ISOL	ISOL	ISOL	ISOL	ISOL	SCT
7	ODISHA	ISOL	ISOL	ISOL	ISOL	ISOL	ISOL	ISOL
8	JHARKHAND	ISOL	ISOL	ISOL	ISOL	ISOL	SCT	SCT
9	BIHAR	SCT	ISOL	ISOL	ISOL	ISOL	ISOL	SCT
10	EAST UTTAR PRADESH	ISOL	DRY	DRY	DRY	DRY	DRY	ISOL
11	WEST UTTAR PRADESH	ISOL	DRY	DRY	DRY	DRY	DRY	DRY
12	UTTARAKHAND	SCT	ISOL	DRY	DRY	DRY	DRY	ISOL
13	HARYANA CHANDIGARH & DELHI	ISOL	DRY	DRY	DRY	DRY	DRY	DRY
14	PUNJAB	ISOL	DRY	DRY	DRY	DRY	DRY	DRY
15	HIMACHAL PRADESH	SCT	ISOL	DRY	DRY	DRY	DRY	DRY
16	JAMMU & KASHMIR AND LADAKH	ISOL	DRY	DRY	DRY	DRY	DRY	DRY
17	WEST RAJASTHAN	ISOL	DRY	DRY	DRY	DRY	DRY	DRY
18	EAST RAJASTHAN	ISOL	ISOL	ISOL	ISOL	DRY	DRY	DRY
19	WEST MADHYA PRADESH	ISOL	ISOL	ISOL	ISOL	ISOL	ISOL	ISOL
20	EAST MADHYA PRADESH	ISOL	ISOL	ISOL	ISOL	ISOL	ISOL	ISOL
21	GUJARAT REGION	ISOL	ISOL	ISOL	ISOL	ISOL	ISOL	ISOL
22	SAURASHTRA & KUTCH	ISOL	ISOL	ISOL	ISOL	ISOL	ISOL	ISOL
23	KONKAN & GOA	FWS	SCT	SCT	SCT	ISOL	ISOL	ISOL
24	MADHYA MAHARASHTRA	SCT	SCT	SCT	ISOL	ISOL	ISOL	ISOL
25	MARATHAWADA	ISOL	SCT	SCT	ISOL	ISOL	ISOL	ISOL
26	VIDARBHA	ISOL	ISOL	ISOL	ISOL	ISOL	ISOL	ISOL
27	CHHATTISGARH	ISOL	ISOL	ISOL	ISOL	ISOL	ISOL	ISOL
28	COASTAL ANDHRA PRADESH & YANAM	ISOL	ISOL	ISOL	ISOL	ISOL	SCT	SCT
29	TELANGANA	ISOL	SCT	ISOL	ISOL	ISOL	ISOL	ISOL
30	RAYALASEEMA	ISOL	ISOL	ISOL	ISOL	SCT	SCT	SCT
31	TAMILNADU PUDUCHERRY & KARAIKAL	ISOL	ISOL	SCT	SCT	SCT	SCT	ISOL
32	COASTAL KARNATAKA	SCT	SCT	FWS	FWS	FWS	WS	WS
33	NORTH INTERIOR KARNATAKA	ISOL	ISOL	SCT	SCT	FWS	FWS	FWS
34	SOUTH INTERIOR KARNATAKA	ISOL	ISOL	SCT	SCT	FWS	FWS	FWS
35	KERALA & MAHE	SCT	SCT	FWS	SCT	SCT	FWS	FWS
36	LAKSHADWEEP	SCT	SCT	SCT	SCT	SCT	FWS	FWS

- As the lead period increases forecast accuracy decreases.

Impact & Action Suggested due to heavy to very heavy rainfall over Meghalaya 05th June. (For orange colour warning areas)

Impact Expected

- ❖ Localized Flooding of roads, water logging in low lying areas of the above region.
- ❖ Occasional reduction in visibility due to heavy rainfall.
- ❖ Minor damage to kutcha roads.
- ❖ Possibilities of damage to vulnerable structure.
- ❖ Localized Landslides/Mudslides
- ❖ Damage to horticulture and standing crops in some areas due to inundation.
- ❖ It may lead to riverine flooding in some river catchments (for riverine flooding please visit Web page of CWC).

Action Suggested

- ❖ Check for traffic congestion on your route before leaving for your destination.
- ❖ Follow any traffic advisories that are issued in this regard.
- ❖ Avoid going to areas that face the water logging problems often.
- ❖ Avoid staying in vulnerable structure.

Agromet advisories for likely impact of Heavy Rainfall / Gusty Winds

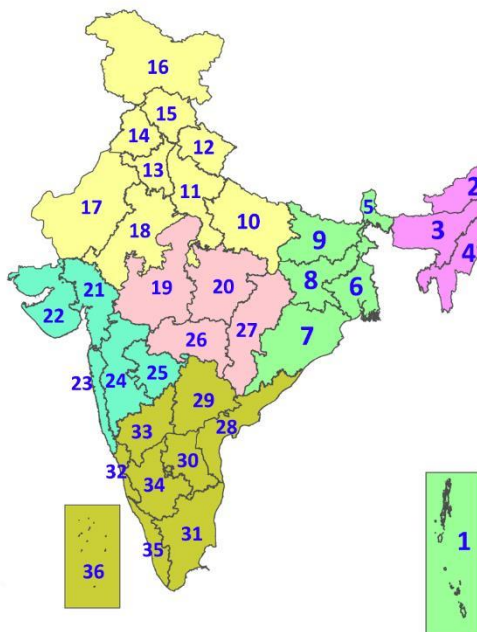
- Postpone sowing of *Sali* rice and vegetables in **Assam** and harvesting of rice in **Tripura**.
- Drain out excess water and ensure proper drainage in the rice nursery beds, fields of soybean, chilli, okra and other vegetables and in **Arunachal Pradesh**; rice, sesame, maize, sugarcane, ginger and turmeric in **Assam**; bottle gourd and French bean in **Meghalaya**; and rice fields, and *Aus* rice nurseries and vegetables in **Tripura**.
- Shift the harvested produce in safer places or cover the produce with tarpaulin sheets in the fields. Tie the harvested crops properly and cover them to minimise the risk of displacement due to strong surface winds.
- Provide mechanical support and propping to horticultural crops and staking to vegetables to avoid lodging.

Livestock / Fishery

- Keep the animals inside the shed during heavy rainfall and provide them balanced feed.
- Store feed and fodder in a safe place to prevent spoilage.
- Construct an outlet with proper netting around the ponds to drain out excess water, thereby preventing fish from escaping in case of overflow.

LEGENDS

1. अंडमान और निकोबार द्वीपसमूह
2. अरुणाचल प्रदेश
3. असम और मेघालय
4. नागालैंड, मणिपुर, मिजोरम और त्रिपुरा
5. उप-हिमालयी पश्चिम बंगाल और सिक्किम
6. गंगीय पश्चिम बंगाल
7. ओडिशा
8. झारखंड
9. बिहार
10. पूर्वी उत्तर प्रदेश
11. पश्चिम उत्तर प्रदेश
12. उत्तराखंड
13. हरियाणा, चंडीगढ़ और दिल्ली
14. पंजाब
15. हिमाचल प्रदेश
16. जम्मू और कश्मीर और लद्दाख
17. पश्चिम राजस्थान
18. पूर्वी राजस्थान
19. पश्चिम मध्य प्रदेश
20. पूर्वी मध्य प्रदेश
21. गुजरात
22. सौराष्ट्र
23. कोंकण और गोवा
24. मध्य महाराष्ट्र
25. मराठवाड़ा
26. विदर्भ
27. छत्तीसगढ़
28. तटीय आंध्र प्रदेश और यनम
29. तेलंगाना
30. रायलसीमा
31. तमिलनाडु, पुडुचेरी और कराईकल
32. तटीय कर्नाटक
33. आंतरिक उत्तरी कर्नाटक
34. आंतरिक दक्षिणी कर्नाटक
35. केरल और माहे
36. लक्षद्वीप



1. Andaman & Nicobar Islands
2. Arunachal Pradesh
3. Assam & Meghalaya
4. Nagaland, Manipur, Mizoram & Tripura
5. Sub-Himalayan West Bengal & Sikkim
6. Gangetic West Bengal
7. Odisha
8. Jharkhand
9. Bihar
10. East Uttar Pradesh
11. West Uttar Pradesh
12. Uttarakhand
13. Haryana, Chandigarh & Delhi
14. Punjab
15. Himachal Pradesh
16. Jammu & Kashmir and Ladakh
17. West Rajasthan
18. East Rajasthan
19. West Madhya Pradesh
20. East Madhya Pradesh
21. Gujarat
22. Saurashtra
23. Konkan & Goa
24. Madhya Maharashtra
25. Marathwada
26. Vidarbha
27. Chhattisgarh
28. Coastal Andhra Pradesh & Yanam
29. Telangana
30. Rayalaseema
31. Tamilnadu, Puducherry & Karaikal
32. Coastal Karnataka
33. North Interior Karnataka
34. South Interior Karnataka
35. Kerala & Mahe
36. Lakshadweep

SPATIAL DISTRIBUTION (% of Stations reporting)

% Stations	Category	% Stations	Category
76-100	Widespread (WS/Most Places)	26-50	Scattered (SCT/A Few Places)
51-75	Fairly Widespread (FWS/Many Places)	1-25	Isolated (ISOL)



Fog



Heavy Snow



Cold Wave



Heavy Rain



Dust Storm



Cold Day



Very Heavy Rain



Heat Wave



Ground Frost



Extremely Heavy Rain



Warm Night



Thunder & Lightning



Hot Day



Hailstorm



Hot & Humid



Dust Raising Winds



Strong Surface Winds

COLOUR CODED WARNING

No Warning (No Action)

Watch (Be Aware)

Alert (Be Prepared To Take Action)

Warning (Take Action)

Probabilistic Forecast

Terms	Probability of Occurrence (%)
Unlikely	< 25
Likely	25 - 50
Very Likely	50 - 75
Most Likely	> 75

DEFINITION/CRITERIA

Rain/ Snow *

Heavy: 64.5 to 115.5 mm/cm *
Very Heavy: 115.6 to 204.4 mm/cm*
Extremely Heavy: > 204.4 mm/cm *

Heat Wave

When maximum temperature of a station reaches $\geq 40^{\circ}\text{C}$ for plains and $\geq 30^{\circ}\text{C}$ for hilly regions
(a) Based on Departure from normal

Heat Wave: Maximum Temperature Departure from normal 4.5°C to 6.4°C .
Severe Heat Wave: Maximum Temperature Departure from normal $\geq 6.5^{\circ}\text{C}$

(b). Based on Actual maximum temperature

Heat Wave: When actual maximum temperature $\geq 45^{\circ}\text{C}$.
Severe Heat Wave: When actual maximum temperature $\geq 47^{\circ}\text{C}$

(c). Criteria for heat wave for coastal stations

When maximum temperature departure is $> 4.5^{\circ}\text{C}$ from normal. Heat Wave may be described provided maximum temperature $\geq 37^{\circ}\text{C}$

Warm Night

When maximum temperature remains 40°C

Warm Night: When minimum temperature departure 4.5°C to 6.4°C .
Severe Warm Night: When minimum temperature departure $> 6.4^{\circ}\text{C}$.

Cold Wave

When minimum temperature of a station $\leq 10^{\circ}\text{C}$ for plains and $\leq 0^{\circ}\text{C}$ for hilly regions.

(a). Based on departure

Cold Wave: Minimum Temperature Departure from normal -4.5°C to -6.4°C .
Severe Cold Wave: Minimum Temperature Departure from normal $\leq -6.5^{\circ}\text{C}$

(b) Based on actual Minimum Temperature (for Plains only)

Cold Wave : When Minimum Temperature is $\leq 4.0^{\circ}\text{C}$
Severe Cold Wave: When Minimum Temperature is $\leq 2.0^{\circ}\text{C}$

(c) For Coastal Stations

When Minimum Temperature departure is $\leq -4.5^{\circ}\text{C}$ & actual Minimum Temperature is $\leq 15^{\circ}\text{C}$

Cold Day

When minimum temperature of a station $\leq 10^{\circ}\text{C}$ for plains and $\leq 0^{\circ}\text{C}$ for hilly regions
Based on departure

Cold Day: Maximum Temperature Departure from normal -4.5°C to -6.4°C .
Severe Cold Day: Maximum Temperature Departure from normal $\leq -6.5^{\circ}\text{C}$

Fog

Phenomenon of small droplets suspended in air and the horizontal visibility $< 1\text{km}$

Moderate Fog: When the visibility between 500-200 metres
Dense Fog: when the visibility between 50- 200 metres
Very Dense Fog: when the visibility < 50 metres

Thunderstorm

Sudden electrical discharges manifested by a flash of light (Lightning) and a sharp rumbling sound (thunder)

Dust/Sand Storm

An ensemble of particles of dust or sand energetically lifted to great heights by a strong and turbulent wind.

Frost

Ice deposits on ground

Air temperature $\leq 4^{\circ}\text{C}$ (over Plains)

Squall

A strong wind that rises suddenly, lasts for atleast 1 minute.

Moderate: Wind speed 52-61 kmph
Severe: Wind speed 62-87 kmph
Very Severe: Wind speed > 87 kmph

Sea State

Effect of various waves in the sea over specific area

Rough to very rough: Wind speed 41-62 kmph (22-33 knots) & Wave height 2.5-6 metre
High to very high: Wind speed 63-117 kmph (34-63 knots) & Wave height 6-14 metre
Phenomenal: Wind speed > 117 kmph (> 63 knots) & Wave height > 14 metre

Cyclone

Cyclonic Storm: Wind speed 62-87 kmph (34-47 knots)
Severe Cyclonic Storm: Wind speed 88-117 kmph (48-63 knots)
Very Severe Cyclonic Storm: Wind speed 118-165 kmph (64 - 89 knots)
Extremely Severe Cyclonic Storm: Wind speed 166-220 kmph (90 -119 knots)
Super Cyclone Strom: Wind speed > 220 kmph (> 119 knots)

* Red colour warning does not mean "Red Alert", Red colour warning means "Take Action".
Forecast and Warning for any day is valid from 0830 hours IST of day till 0830 hours IST of next day.
For more details, kindly visit <https://mausam.imd.gov.in> or contact: 011-2434-4599
(Service to the Nation since 1875)

Hot and Humid: When maximum temperatures remains 3°C above normal along with the above normal relative humidity.