

2025-08-13

Time of Issue: 19:55:00 hours IST
(Night)

ALL INDIA WEATHER SUMMARY AND FORECAST BULLETIN

Significant Weather Features

Weather, Forecast and Warnings :

Northwest India:

Extremely heavy rainfall very likely at isolated places over Himachal Pradesh, Uttarakhand on 13th August.

Isolated **heavy rainfall** likely over Jammu-Kashmir during 13th-18th; Himachal Pradesh, Uttarakhand during 13th-19th; Punjab during 14th-16th; Haryana, Chandigarh, West Uttar Pradesh during 13th-16th; East Uttar Pradesh on 14th; East Rajasthan during 14th-18th August with **very heavy rainfall** over Jammu- Kashmir on 14th & 15th; Himachal Pradesh on 14th; Uttarakhand during 13th-17th; West Uttar Pradesh during 13th -15th; East Uttar Pradesh on 13th August.

Light/moderate rainfall at most/many places accompanied with thunderstorm & lightning likely over Jammu-Kashmir-Ladakh-Gilgit-Baltistan-Muzaffarabad & Uttarakhand during next 7 days.

Northeast India:

Isolated **heavy rainfall** likely to continue over Arunachal Pradesh, Assam & Meghalaya during 13th-16th; Nagaland, Manipur, Mizoram & Tripura during 13th-17th August with **very heavy rainfall** over Arunachal Pradesh on 13th; Assam & Meghalaya on 13th & 16th August.

Light/moderate rainfall at many places accompanied with thunderstorm & lightning likely during next 4 days.

South Peninsular India:

Extremely heavy rainfall very likely at isolated places over Coastal Andhra Pradesh & Yanam on 13th; Telangana on 13th & 14th August.

Isolated **heavy rainfall** likely over Coastal Karnataka & North Interior Karnataka during 13th- 19th; South Interior Karnataka during 13th-17th; Rayalaseema on 14th; Coastal Andhra Pradesh & Yanam, Telangana during 13th-19th; Tamil Nadu, Puducherry & Karaikal on 13th; Kerala during 13th-15th August with isolated **very heavy rainfall** over Rayalaseema on 13th; Coastal Andhra Pradesh & Yanam on 14th; Telangana during 15th-17th; Coastal Karnataka on 18th & 19th August.

Strong surface winds (speed reaching 40-50 kmph) very likely over South Peninsular India during next 2 days.

Light to moderate rainfall at most/many places accompanied with thunderstorm & lightning likely over Rayalaseema, Coastal Andhra Pradesh & Yanam and Telangana during next 5 days.

East & Central India:

Extremely heavy rainfall very likely at isolated places over Bihar on 13th August.

Isolated **heavy rainfall** likely over Madhya Pradesh, Vidarbha & Chhattisgarh during 13th-19th; Gangetic West Bengal on 13th; Sub-Himalayan West Bengal & Sikkim on 14th & during 17th-19th; Bihar on 14th & 15th; Odisha during 13th-17th August with isolated **very heavy rainfall** over West Madhya Pradesh on 13th, 15th & 16th; East Madhya Pradesh & Odisha on 13th & 14th; Vidarbha on 13th, 14th, 17th, 18th; Chhattisgarh during 13th-17th; Sub-Himalayan West Bengal & Sikkim on 13th August.

Light to moderate rainfall at most/many places accompanied with thunderstorm & lightning likely over the region during next 7 days.

West India:

***Red color warning does not mean "Red Alert" Red color warning means "Take Action"**

Forecast and warning for any day is valid from 0830 hours IST of day till 0830 hours IST of next day

For more details kindly visit <https://mausam.imd.gov.in> or contact 011-2434-4599

(Service to the nation since 1875)



Isolated **heavy rainfall** likely over Madhya Maharashtra on 13th; Konkan & Goa during 13th-15th; Marathawada on 14th, 15th & 18th; Gujarat Region during 14th-19th; Saurashtra & Kutch during 17th-19th August **with isolated very heavy rainfall over Marathawada on 13th; Konkan & Goa, ghat areas of Madhya Maharashtra during 16th-19th August.**

Light to moderate rainfall at many/some places very likely over the region during next 5 days.

Main Weather Observations:

❖ **Rainfall distribution** (from 0830 hours IST to 1730 hours IST of today): **at most places** over Vidarbha, Rayalaseema, Arunachal Pradesh, South Interior Karnataka, Sub-himalayan West Bengal & Sikkim, Kerala & Mahe, Coastal Andhra Pradesh & Yanam, Bihar, Assam & Meghalaya, Konkan & Goa, East Madhya Pradesh, Coastal Karnataka, East Uttar Pradesh and Nagaland, Manipur, Mizoram & Tripura; **at many places** over Odisha, West Uttar Pradesh, Jharkhand, Chhattisgarh, Marathwada, Himachal Pradesh, Uttarakhand, North Interior Karnataka, Saurashtra & Kutch, Gujarat Region, Jammu & Kashmir and Ladakh, Tamilnadu Puducherry & Karaikal, Andaman & Nicobar Islands, Telangana, Madhya Maharashtra, West Madhya Pradesh, Gangetic West Bengal and Lakshadweep; **Dry** over rest of the country.

❖ **Significant rainfall recorded(in cm)** (from 0830 hours IST to 1730 hours IST of today): **Vidarbha**: Wardha (dist Wardha) 11, Amraoti (dist Amravati) 10, Yeotmal (dist Yavatmal) 7, Chandrapur (chanda) (dist Chandrapur) 5, Akola (dist Akola), Nagpur-sonegaon Airport (dist Nagpur) 2 Each; Sub-himalayan west bengal & sikkim: Gangtok-tadong (dist Gangtok) 6, Gangtok (dist Gangtok), Kalimpong (dist Kalimpong), Cooch Behar (dist Cooch Behar) 4 Each, Darjeeling (dist Darjeeling) 3, Balurghat (dist Dakshin Dinajpur), Bagdogra AP (dist Darjeeling) 2 Each; Coastal andhra pradesh & yanam: Tuni (dist Kakinada) 5, Vijayawada-gannavaram (dist Krishna) 4, Kakinada (dist Kakinada), Nandigama (dist Ntr) 3 Each; **Bihar**: Muzaffarpur-obs (dist Muzaffarpur) 5, Patna-airport (dist Patna) 3, Gaya (dist Gaya), Motihari (dist East Champaran) 2 Each; Assam & meghalaya: Dhubri (dist Dhubri) 3, Silchar (dist Cachar), Cherrapunji (dist East Khasi Hills) 2 Each; Konkan & goa : Ratnagiri (dist Ratnagiri) 3, Dahanu (dist Palghar), Matheran (dist Raigad) 2 Each; Andaman & nicobar islands: Long Island (dist North And Middle Andaman) 2; East madhya pradesh: Malanjhand (dist Balaghat) 2; Kerala & mahe: Punalur (dist Kollam), Kochi (cial) (dist Ernakulam) 2 Each; Coastal karnataka: Karwar (dist Uttara Kannada) 2; **Telangana**: Khammam (dist Khammam) 2; Madhya maharashtra : Mahabaleshwar (dist Satara) 2; West madhya pradesh: Betul (dist Betul) 2; Nagaland, manipur, mizoram & tripura: Aizawl (dist Aizawl) 2; Gangetic west bengal: Canning (dist South 24 Parganas) 2; **Odisha**: Bhubaneshwar-cuttack (dist Khordha), Koraput (dist Koraput) 2 Each.

❖ **Heavy Rainfall observed** (from 0830 hours IST to 1730 hours IST of today): **Heavy rain** at a few places over Vidarbha

❖ **Minimum Temperature Departures (as on 13-08-2025): markedly above normal(> 5.1°C)** at few places over Jammu-KashmirLadakh-Gilgit-Baltistan-Muzaffarabad, West Madhya Pradesh and East Madhya Pradesh; at isolated places over Assam & Meghalaya, Bihar, East Uttar Pradesh, West Uttar Pradesh, Himachal Pradesh, West Rajasthan and Saurashtra & Kutch. **appreciably above normal(3.1°C to 5.0°C)** at few places over Sub Himalayan West Bengal & Sikkim and Uttarakhand; at isolated places over Gangetic West Bengal, Odisha and Gujarat Region. **above normal(1.6°C to 3.0°C)** at few places over East Rajasthan; at isolated places over Haryana-Chandigarh-Delhi, Punjab, Madhya Maharashtra, Vidarbha, Chhattisgarh and Tamil Nadu, Puducherry & Karaikal. **near normal(-1.5°C to 1.5°C)** at many places over Jharkhand, Coastal Andhra Pradesh & Yanam, Telangana, Rayalaseema and Kerala & Mahe; at most places over Andaman & Nicobar Islands, Nagaland, Manipur, Mizoram & Tripura, Konkan & Goa, Marathwada, Coastal Karnataka, North Interior Karnataka, South Interior Karnataka and Lakshadweep. **The lowest minimum temperature** of 18.4°C is reported at MATHERAN (MAHARASHTRA) over the Plains of India.

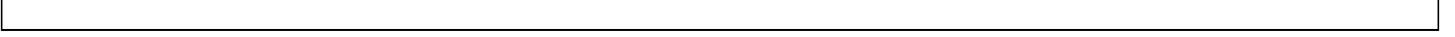
❖ **Maximum Temperature Departures (as on 13-08-2025): markedly above normal(> 5.1°C)** at isolated places over Odisha and Jammu-KashmirLadakh-Gilgit-Baltistan-Muzaffarabad. **appreciably above normal(3.1°C to 5.0°C)** at few places over Chhattisgarh; at isolated places over Gangetic West Bengal, East Rajasthan and Madhya Maharashtra. **above normal(1.6°C to 3.0°C)** at few places over Gujarat Region; at isolated places over West Uttar Pradesh, Uttarakhand, Haryana-Chandigarh-Delhi, Punjab, Himachal Pradesh, West Madhya Pradesh, Saurashtra & Kutch, Vidarbha and Coastal Andhra Pradesh & Yanam. **near normal(-1.5°C to 1.5°C)** at most places over West Rajasthan and Lakshadweep; at few places over Andaman & Nicobar Islands, Sub Himalayan West Bengal & Sikkim, Jharkhand, East Uttar Pradesh, East Madhya Pradesh, Konkan & Goa, Marathwada, Telangana, North Interior Karnataka and Kerala & Mahe; at isolated places over Assam & Meghalaya, Nagaland, Manipur, Mizoram & Tripura and Tamil Nadu, Puducherry & Karaikal. **The highest maximum temperature** of 37.6°C is reported at BIKANER (RAJASTHAN).

***Red color warning does not mean "Red Alert" Red color warning means "Take Action"**

Forecast and warning for any day is valid from 0830 hours IST of day till 0830 hours IST of next day

For more details kindly visit <https://mausam.imd.gov.in> or contact 011-2434-4599

(Service to the nation since 1875)



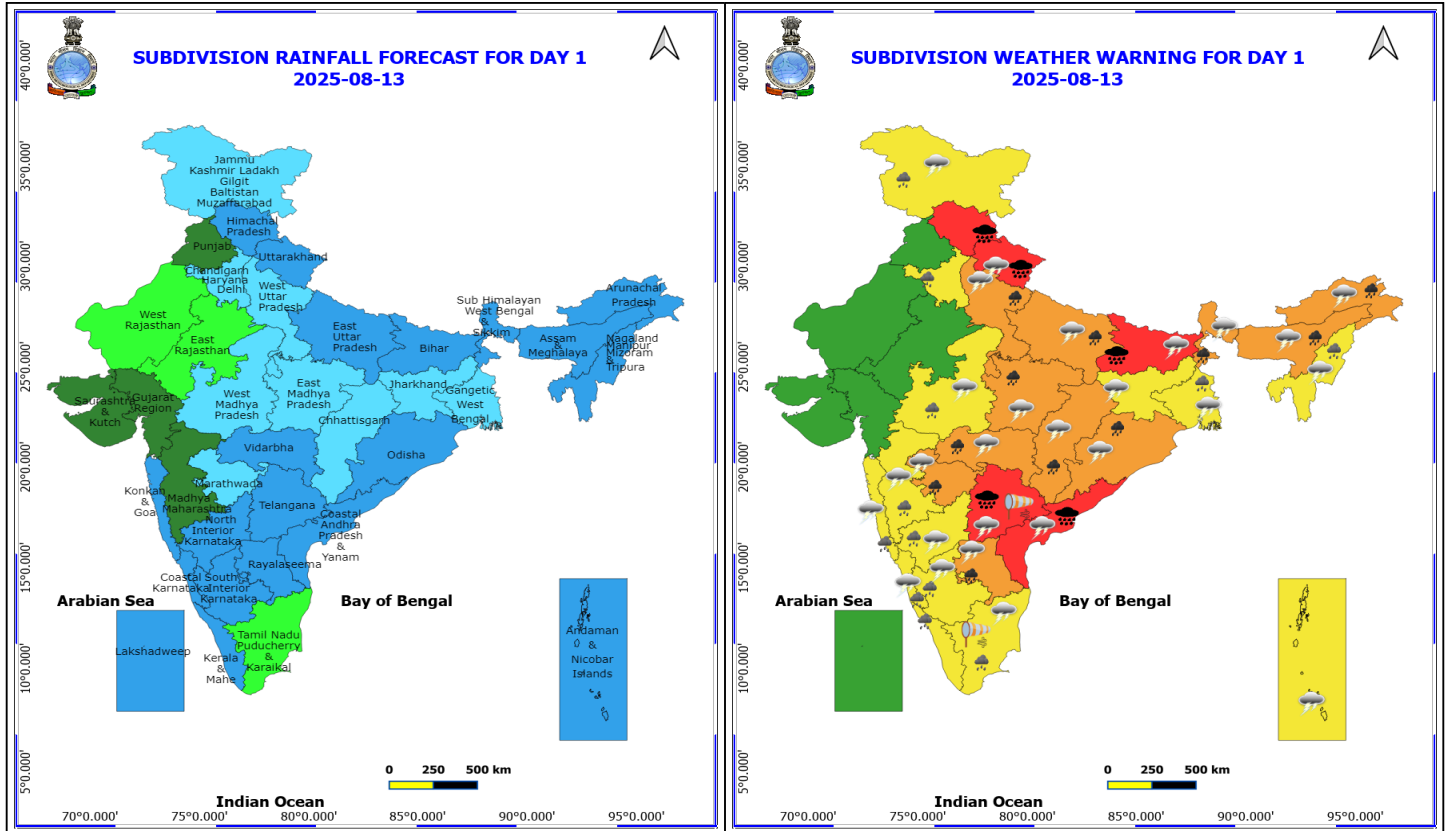


Meteorological Analysis (Based on 1730 hours IST)

- The **Low Pressure** area over Westcentral & adjoining northwest Bay of Bengal off North Andhra Pradesh and South Odisha coasts persists over the same region at 1730 hrs IST of today, the 13th August 2025. The associated upper air cyclonic circulation extends upto 7.6 km above mean sea level tilting southwards with height. It is likely to move west-northwestwards and become well marked during next 24 hours. It is likely to move across North Coastal Andhra Pradesh and south Odisha during next 48 hours.
- The **monsoon trough** at mean sea level now passes through Faridkot, Ludhiana, Rohtak, Datia, Mandla, Rajnandgaon, Jagdalpur and thence south-southeastwards to centre of low-pressure area over Westcentral & adjoining northwest Bay of Bengal off North Andhra Pradesh and South Odisha coasts.
- An **upper air cyclonic circulation** lies over Himachal Pradesh and adjoining Jammu between 1.5 and 3.1 km above mean sea level.
- The **upper air cyclonic circulation** over kutch & neighbourhood at 3.1 km above mean sea level persists.
- The **east-west trough** from central parts of Bay of Bengal to northeast Arabian sea adjoining Kutch across the upper air cyclonic circulation associated with the low-pressure area over Westcentral & adjoining northwest Bay of Bengal off North Andhra Pradesh & South Odisha coast, Telangana, North Maharashtra and South Gujarat regions between 3.1 & 5.8 km above mean sea level tilting southward with height persists.
- The **upper air cyclonic circulation** over northeast Assam extending upto 3.1 km above mean sea level persists.
- The **upper air cyclonic circulation** over northwest Uttar Pradesh over northwest Uttar Pradesh & adjoining Haryana extended upto 0.9 km above mean sea level persists.
- The **upper air cyclonic circulation** over East Uttar Pradesh & neighbourhood extended upto 1.5 km above mean sea level persists.
- The **trough** from **upper air cyclonic circulation** over East Uttar Pradesh & neighbourhood to upper air cyclonic circulation associated with the low-pressure area over Westcentral & adjoining northwest Bay of Bengal off North Andhra Pradesh and South Odisha coasts across Chhattisgarh upto 1.5 km above mean sea level persists.

Weather Outlook for subsequent 3 days

Fairly widespread to widespread rainfall likely over the most parts of the country.



13 August (Day 1)

- ❖ **Heavy to Very Heavy Rainfall with isolated Extremely Heavy Rainfall** very likely at isolated places over Bihar, Coastal Andhra Pradesh, Himachal Pradesh, Telangana and Uttarakhand.
- ❖ **Heavy to Very Heavy Rainfall** very likely at isolated places over Arunachal Pradesh, Assam & Meghalaya, Chhattisgarh, East Madhya Pradesh, Marathwada, Odisha, Rayalaseema, Sub Himalayan West Bengal & Sikkim, Uttar Pradesh and Vidarbha.
- ❖ **Heavy Rainfall** very likely at isolated places over Gangetic West Bengal, Haryana, Chandigarh & Delhi, Jammu-Kashmir-Ladakh-Gilgit-Baltistan-Muzaffarabad, Karnataka, Kerala & Mahe, Konkan & Goa, Madhya Maharashtra, Nagaland, Manipur, Mizoram and Tripura, Tamil Nadu Puducherry & Karaikal and West Madhya Pradesh.
- ❖ **Thunderstorm accompanied with lightning & gusty winds(40-50kmph)** very likely at isolated places over Andaman & Nicobar Islands, Chhattisgarh, North Interior Karnataka and Vidarbha.
- ❖ **Thunderstorm accompanied with lightning & gusty winds(30-40kmph)** very likely at isolated places over Bihar, Coastal Karnataka, Jammu-Kashmir-Ladakh-Gilgit-Baltistan-Muzaffarabad, Jharkhand, Odisha, Rayalaseema, South Interior Karnataka and West Bengal & Sikkim.
- ❖ **Thunderstorm accompanied with Lightning** very likely at isolated places over Arunachal Pradesh, Assam & Meghalaya, Coastal Andhra Pradesh, Konkan & Goa, Madhya Maharashtra, Madhya Pradesh, Marathwada, Nagaland, Manipur, Mizoram and Tripura, Tamil Nadu Puducherry & Karaikal, Telangana, Uttar Pradesh and Uttarakhand.
- ❖ **Strong Surface Winds** very likely at isolated places over Tamil Nadu Puducherry & Karaikal and Telangana.

Squally wind with speed reaching 45 kmph to 55 kmph gusting to 65 kmph is likely to prevail along and off Somalia,

***Red color warning does not mean "Red Alert" Red color warning means "Take Action"**

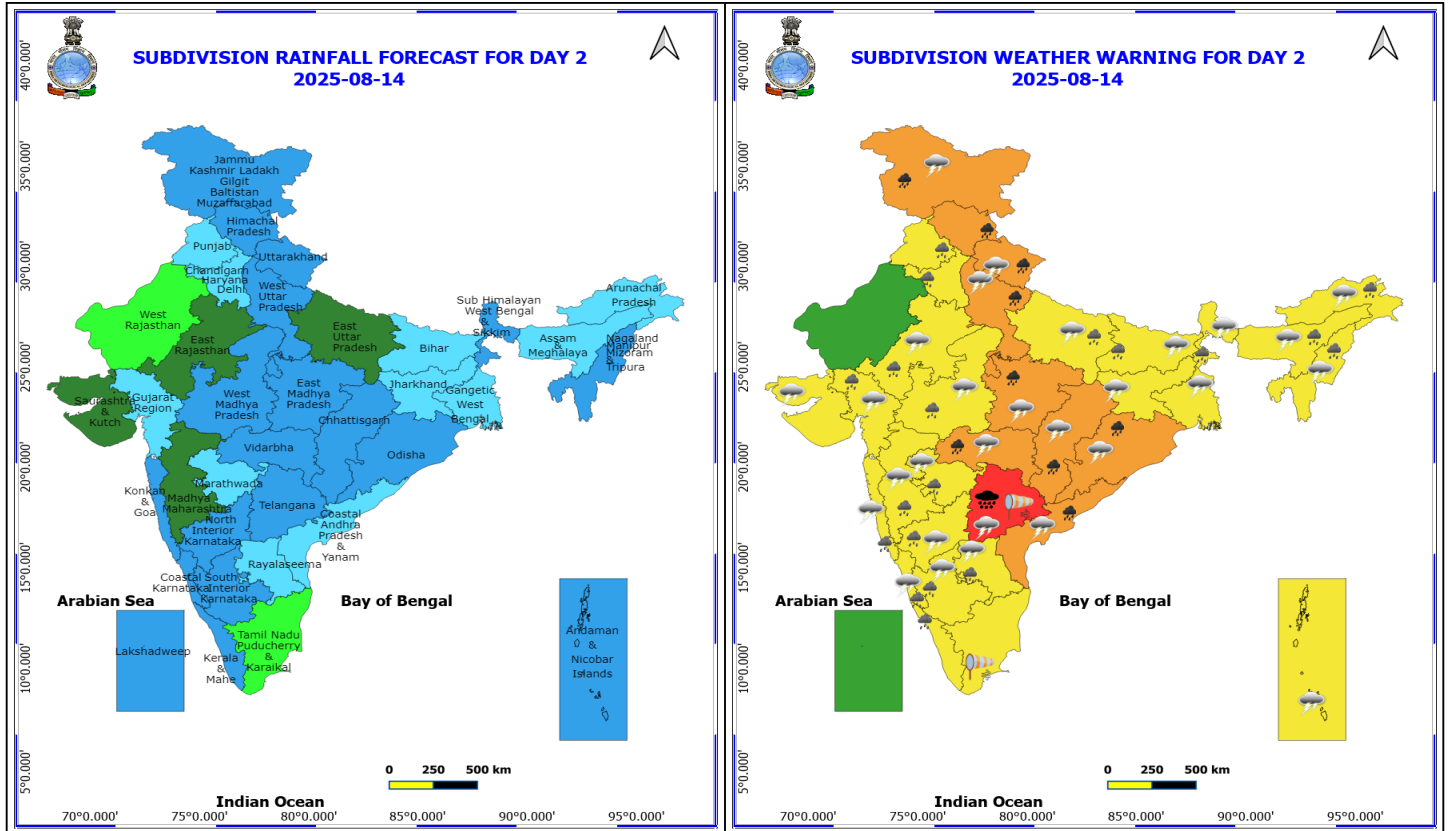
Forecast and warning for any day is valid from 0830 hours IST of day till 0830 hours IST of next day

For more details kindly visit <https://mausam.imd.gov.in> or contact 011-2434-4599

(Service to the nation since 1875)

Yemen, Oman coasts, most parts of westcentral Arabian sea and adjoining areas southwest, eastcentral, northwest Arabian Sea.

Squally weather with wind speed reaching 40 - 50 kmph gusting to 60 kmph likely to prevail along and off north Gujarat coast & adjoining northeast & eastcentral Arabian Sea, along and off Konkan, Goa, Karnataka, Kerala coasts, over Lakshadweep, Comorin areas, Gulf of Mannar, along and off Sri-Lanka coast, over most parts of south & central Bay of Bengal & adjoining northwest Bay of Bengal, over Andaman Sea, along and off north Andhra Pradesh, south Odisha coasts & adjoining sea areas.



14 August (Day 2)

- ❖ **Heavy to Very Heavy Rainfall with isolated Extremely Heavy Rainfall** very likely at isolated places over Telangana.
- ❖ **Heavy to Very Heavy Rainfall** very likely at isolated places over Chhattisgarh, Coastal Andhra Pradesh, East Madhya Pradesh, Himachal Pradesh, Jammu-Kashmir-Ladakh-Gilgit-Baltistan-Muzaffarabad, Odisha, Uttarakhand, Vidarbha and West Uttar Pradesh.
- ❖ **Heavy Rainfall** very likely at isolated places over Arunachal Pradesh, Assam & Meghalaya, Bihar, East Rajasthan, East Uttar Pradesh, Gujarat Region, Haryana, Chandigarh & Delhi, Karnataka, Kerala & Mahe, Konkan & Goa, Madhya Maharashtra, Marathwada, Nagaland, Manipur, Mizoram and Tripura, Punjab, Rayalaseema, Sub Himalayan West Bengal & Sikkim and West Madhya Pradesh.
- ❖ **Thunderstorm accompanied with lightning & gusty winds(40-50kmph)** very likely at isolated places over Andaman & Nicobar Islands, Chhattisgarh, North Interior Karnataka and Vidarbha.
- ❖ **Thunderstorm accompanied with lightning & gusty winds(30-40kmph)** very likely at isolated places over Bihar, Coastal Karnataka, Jammu-Kashmir-Ladakh-Gilgit-Baltistan-Muzaffarabad, Jharkhand, Odisha, Rayalaseema, South Interior Karnataka and West Bengal & Sikkim.
- ❖ **Thunderstorm accompanied with Lightning** very likely at isolated places over Arunachal Pradesh, Assam & Meghalaya, Coastal Andhra Pradesh, East Rajasthan, Gujarat State, Konkan & Goa, Madhya Maharashtra, Madhya Pradesh, Marathwada, Nagaland, Manipur, Mizoram and Tripura, Telangana, Uttar Pradesh and Uttarakhand.
- ❖ **Strong Surface Winds** very likely at isolated places over Tamil Nadu Puducherry & Karaikal and Telangana.

Squally wind with speed reaching 45 kmph to 55 kmph gusting to 65 kmph is likely to prevail along and off Somalia,

***Red color warning does not mean "Red Alert" Red color warning means "Take Action"**

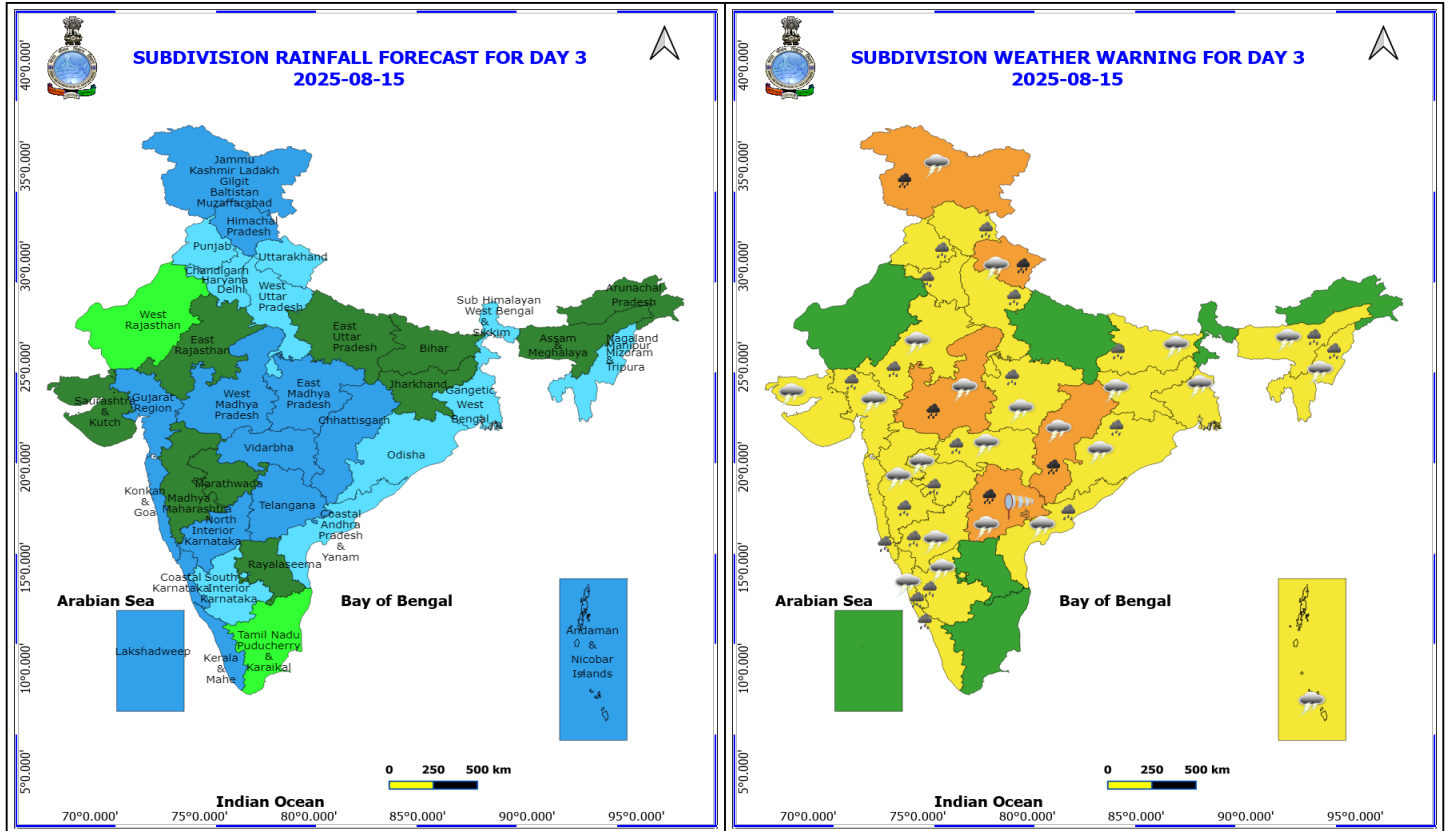
Forecast and warning for any day is valid from 0830 hours IST of day till 0830 hours IST of next day

For more details kindly visit <https://mausam.imd.gov.in> or contact 011-2434-4599

(Service to the nation since 1875)

Yemen, Oman coasts, most parts of westcentral Arabian sea and adjoining areas southwest, eastcentral, northwest Arabian Sea.

Squally weather with wind speed reaching 40 - 50 kmph gusting to 60 kmph likely to prevail along and off Konkan, Goa, Karnataka, Kerala coasts, over Lakshadweep, Comorin areas, Gulf of Mannar, along and off Sri-Lanka coast, over most parts of south & central Bay of Bengal & adjoining, some parts of north Bay of Bengal, over Andaman sea, along and off north Andhra Pradesh, south Odisha coasts & adjoining sea areas.



15 August (Day 3)

- ❖ **Heavy to Very Heavy Rainfall** very likely at isolated places over Chhattisgarh, Jammu-Kashmir-Ladakh-Gilgit-Baltistan-Muzaffarabad, Telangana, Uttarakhand and West Madhya Pradesh.
- ❖ **Heavy Rainfall** very likely at isolated places over Assam & Meghalaya, Bihar, Coastal Andhra Pradesh, East Madhya Pradesh, East Rajasthan, Gujarat Region, Haryana, Chandigarh & Delhi, Himachal Pradesh, Karnataka, Kerala & Mahe, Konkan & Goa, Maharashtra, Nagaland, Manipur, Mizoram and Tripura, Odisha, Punjab and West Uttar Pradesh.
- ❖ **Thunderstorm accompanied with lightning & gusty winds(40-50kmph)** very likely at isolated places over North Interior Karnataka.
- ❖ **Thunderstorm accompanied with lightning & gusty winds(30-40kmph)** very likely at isolated places over Andaman & Nicobar Islands, Bihar, Coastal Karnataka, Gangetic West Bengal, Jammu-Kashmir-Ladakh-Gilgit-Baltistan-Muzaffarabad, Jharkhand, Odisha and South Interior Karnataka.
- ❖ **Thunderstorm accompanied with Lightning** very likely at isolated places over Assam & Meghalaya, Chhattisgarh, Coastal Andhra Pradesh, East Rajasthan, Gujarat State, Madhya Pradesh, Maharashtra, Nagaland, Manipur, Mizoram and Tripura, Telangana and Uttarakhand.
- ❖ **Strong Surface Winds** very likely at isolated places over Telangana.

Squally wind with speed reaching 45 kmph to 55 kmph gusting to 65 kmph is likely to prevail along and off Somalia, Yemen, Oman coasts, most parts of westcentral Arabian sea and adjoining areas southwest, eastcentral Arabian Sea.

Squally weather with wind speed reaching 40 - 50 kmph gusting to 60 kmph likely to prevail along and off Konkan,

***Red color warning does not mean "Red Alert" Red color warning means "Take Action"**

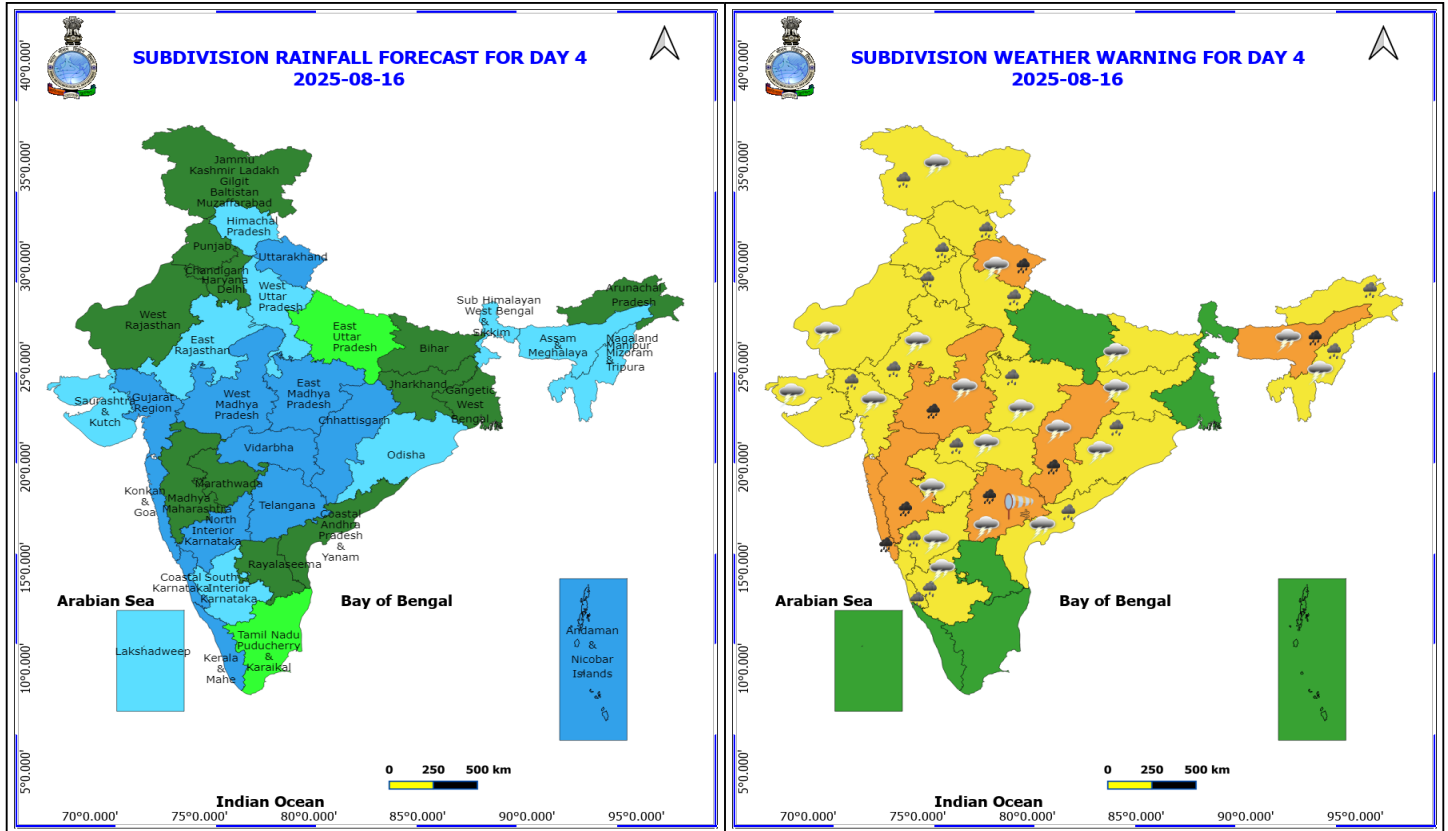
Forecast and warning for any day is valid from 0830 hours IST of day till 0830 hours IST of next day

For more details kindly visit <https://mausam.imd.gov.in> or contact 011-2434-4599

(Service to the nation since 1875)



Goa, Karnataka, Kerala coasts, over Lakshadweep, Comorin areas, Gulf of Mannar, along and off Sri-Lanka coast, over most parts of south & central Bay of Bengal & adjoining, some parts of north Bay of Bengal, along and off Tamil Nadu, Andhra Pradesh, south Odisha coasts, adjoining sea areas and over Andaman sea.



16 August (Day 4)

- ❖ **Heavy to Very Heavy Rainfall** likely at isolated places over Assam & Meghalaya, Chhattisgarh, Konkan & Goa, Madhya Maharashtra, Telangana, Uttarakhand and West Madhya Pradesh.
- ❖ **Heavy Rainfall** likely at isolated places over Arunachal Pradesh, Coastal Andhra Pradesh, East Madhya Pradesh, East Rajasthan, Gujarat Region, Haryana, Chandigarh & Delhi, Himachal Pradesh, Jammu-Kashmir-Ladakh-Gilgit-Baltistan-Muzaffarabad, Karnataka, Nagaland, Manipur, Mizoram and Tripura, Odisha, Punjab, Vidarbha and West Uttar Pradesh.
- ❖ **Thunderstorm accompanied with lightning & gusty winds(40-50kmph)** likely at isolated places over North Interior Karnataka.
- ❖ **Thunderstorm accompanied with lightning & gusty winds(30-40kmph)** likely at isolated places over Bihar, Jammu-Kashmir-Ladakh-Gilgit-Baltistan-Muzaffarabad, Jharkhand, Odisha and South Interior Karnataka.
- ❖ **Thunderstorm accompanied with Lightning** likely at isolated places over Assam & Meghalaya, Chhattisgarh, Coastal Andhra Pradesh, Gujarat State, Madhya Pradesh, Marathwada, Nagaland, Manipur, Mizoram and Tripura, Rajasthan, Telangana, Uttarakhand and Vidarbha.
- ❖ **Strong Surface Winds** likely at isolated places over Telangana.

Squally wind with speed reaching 45 kmph to 55 kmph gusting to 65 kmph is likely to prevail along and off Somalia, Yemen, Oman coasts, most parts of westcentral Arabian sea and adjoining areas southwest, eastcentral Arabian Sea.

Squally weather with wind speed reaching 40 - 50 kmph gusting to 60 kmph likely to prevail along and off along and off Konkan & Goa coasts, over Gulf of Mannar and adjoining Comorin area, along and off Sri-Lanka coast, over some

***Red color warning does not mean "Red Alert" Red color warning means "Take Action"**

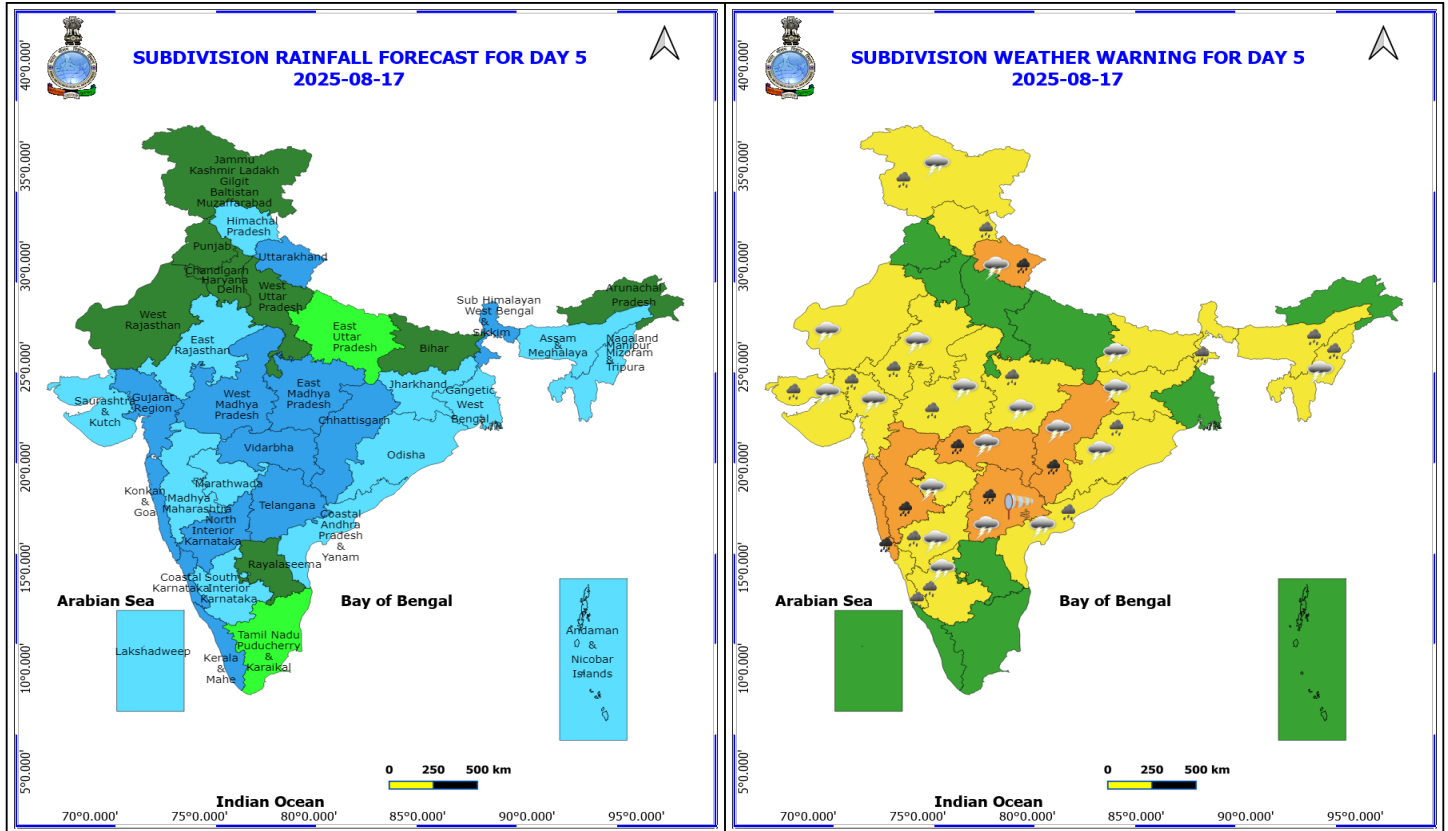
Forecast and warning for any day is valid from 0830 hours IST of day till 0830 hours IST of next day

For more details kindly visit <https://mausam.imd.gov.in> or contact 011-2434-4599

(Service to the nation since 1875)



parts of southwest Bay of Bengal, along and off north Tamil Nadu, Andhra Pradesh coasts, adjoining Odisha coasts, adjoining sea areas, westcentral & adjoining areas of eastcentral & northwest Bay of Bengal.



17 August (Day 5)

- ❖ **Heavy to Very Heavy Rainfall** likely at isolated places over Chhattisgarh, Konkan & Goa, Madhya Maharashtra, Telangana, Uttarakhand and Vidarbha.
- ❖ **Heavy Rainfall** likely at isolated places over Assam & Meghalaya, Coastal Andhra Pradesh, East Rajasthan, Gujarat State, Himachal Pradesh, Jammu-Kashmir-Ladakh-Gilgit-Baltistan-Muzaffarabad, Karnataka, Madhya Pradesh, Nagaland, Manipur, Mizoram and Tripura, Odisha and Sub Himalayan West Bengal & Sikkim.
- ❖ **Thunderstorm accompanied with lightning & gusty winds(40-50kmph)** likely at isolated places over North Interior Karnataka.
- ❖ **Thunderstorm accompanied with lightning & gusty winds(30-40kmph)** likely at isolated places over Bihar, Jammu-Kashmir-Ladakh-Gilgit-Baltistan-Muzaffarabad, Jharkhand, Odisha and South Interior Karnataka.
- ❖ **Thunderstorm accompanied with Lightning** likely at isolated places over Chhattisgarh, Coastal Andhra Pradesh, Gujarat State, Madhya Pradesh, Marathwada, Nagaland, Manipur, Mizoram and Tripura, Rajasthan, Telangana, Uttarakhand and Vidarbha.
- ❖ **Strong Surface Winds** likely at isolated places over Telangana.

Squally wind with speed reaching 45 kmph to 55 kmph gusting to 65 kmph is likely to prevail along and off Somalia, Yemen, Oman coasts, most parts of westcentral Arabian sea and adjoining areas southwest, eastcentral Arabian Sea.

Squally weather with wind speed reaching 40 - 50 kmph gusting to 60 kmph likely to prevail over Gulf of Mannar and adjoining Comorin area, along and off Sri-Lanka coast, over some parts of southwest Bay of Bengal, off north Andhra Pradesh & Odisha coasts, adjoining sea areas, many parts of westcentral Bay of Bengal, adjoining eastcentral Bay of

***Red color warning does not mean "Red Alert" Red color warning means "Take Action"**

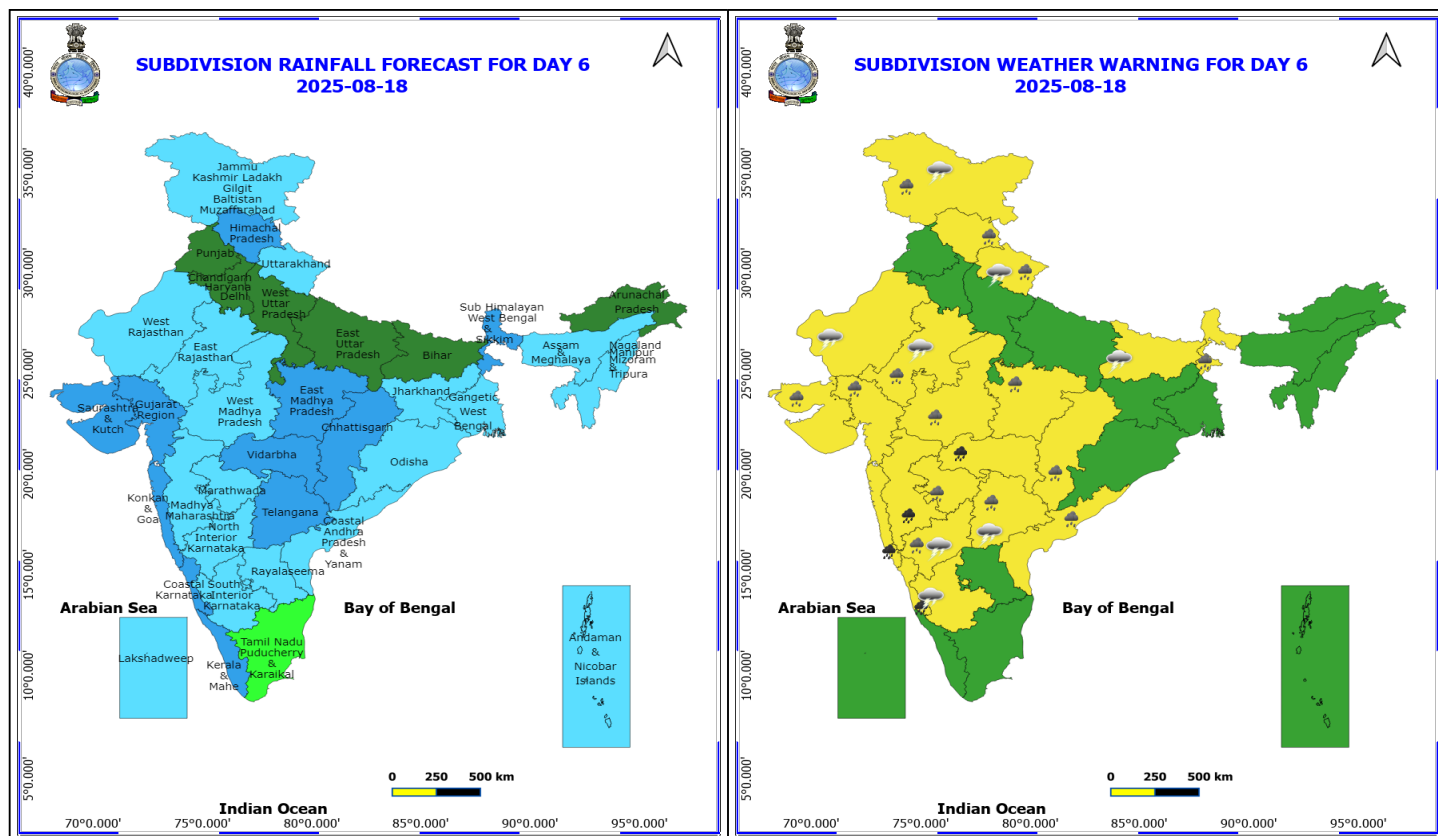
Forecast and warning for any day is valid from 0830 hours IST of day till 0830 hours IST of next day

For more details kindly visit <https://mausam.imd.gov.in> or contact 011-2434-4599

(Service to the nation since 1875)



Bengal.



18 August (Day 6)

- ❖ **Heavy to Very Heavy Rainfall** likely at isolated places over Coastal Karnataka, Konkan & Goa, Madhya Maharashtra and Vidarbha.
- ❖ **Heavy Rainfall** likely at isolated places over Chhattisgarh, Coastal Andhra Pradesh, East Rajasthan, Gujarat State, Himachal Pradesh, Jammu-Kashmir-Ladakh-Gilgit-Baltistan-Muzaffarabad, Madhya Pradesh, Marathwada, North Interior Karnataka, Sub Himalayan West Bengal & Sikkim, Telangana and Uttarakhand.
- ❖ **Thunderstorm accompanied with lightning & gusty winds(30-40kmph)** likely at isolated places over Bihar, Interior Karnataka and Jammu-Kashmir-Ladakh-Gilgit-Baltistan-Muzaffarabad.
- ❖ **Thunderstorm accompanied with Lightning** likely at isolated places over Rajasthan, Telangana and Uttarakhand.

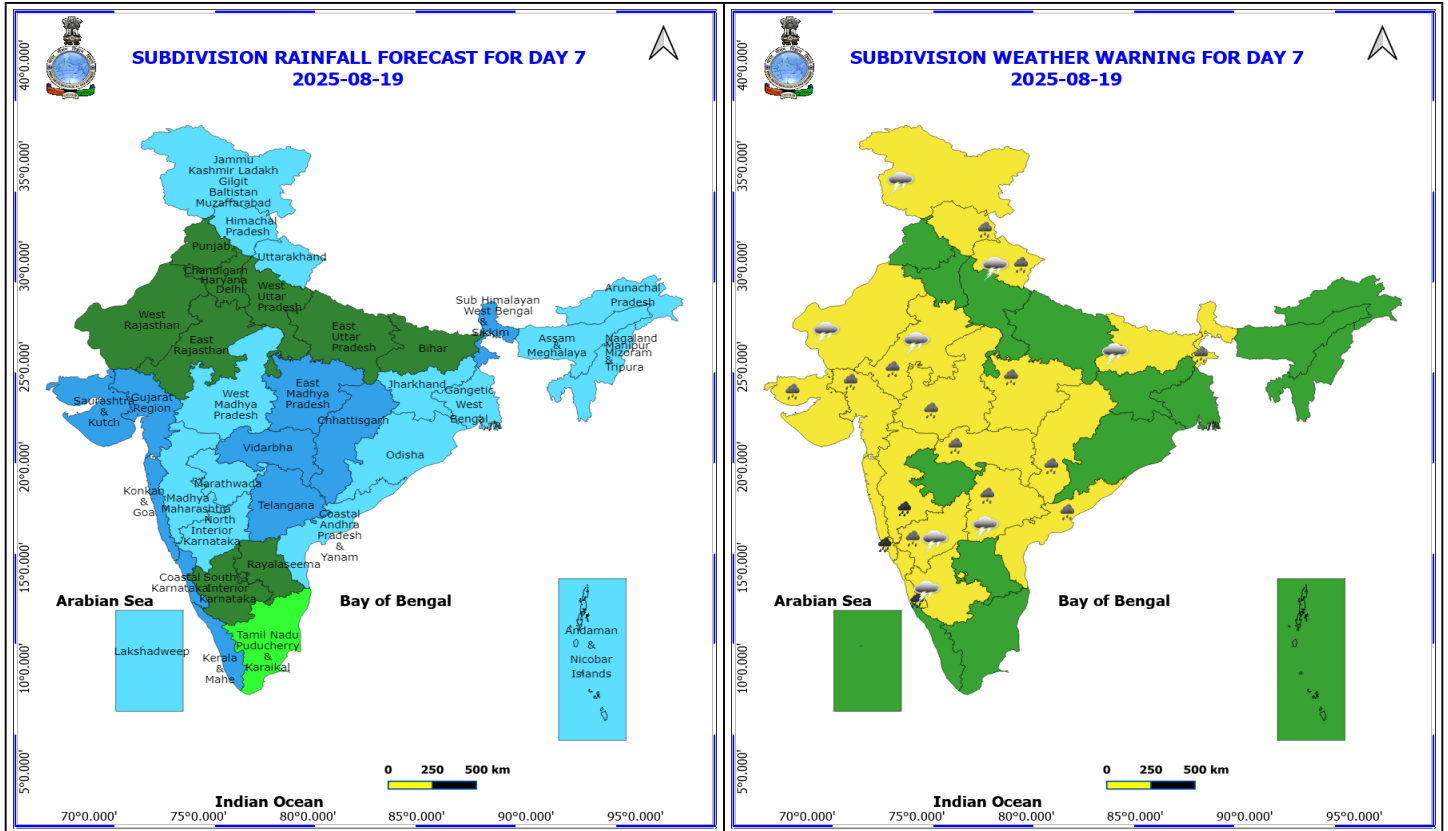
No Fishermen Warning

***Red color warning does not mean "Red Alert" Red color warning means "Take Action"**

Forecast and warning for any day is valid from 0830 hours IST of day till 0830 hours IST of next day

For more details kindly visit <https://mausam.imd.gov.in> or contact 011-2434-4599

(Service to the nation since 1875)



19 August (Day 7)

- ❖ **Heavy to Very Heavy Rainfall** likely at isolated places over Coastal Karnataka, Konkan & Goa and Madhya Maharashtra.
- ❖ **Heavy Rainfall** likely at isolated places over Chhattisgarh, Coastal Andhra Pradesh, East Rajasthan, Gujarat State, Himachal Pradesh, Madhya Pradesh, North Interior Karnataka, Sub Himalayan West Bengal & Sikkim, Telangana, Uttarakhand and Vidarbha.
- ❖ **Thunderstorm accompanied with lightning & gusty winds(30-40kmph)** likely at isolated places over Bihar, Interior Karnataka and Jammu-Kashmir-Ladakh-Gilgit-Baltistan-Muzaffarabad.
- ❖ **Thunderstorm accompanied with Lightning** likely at isolated places over Rajasthan, Telangana and Uttarakhand.

No Fishermen Warning

Flash Flood Warnings

24 hours Outlook for the Flash Flood Risk (FFR) till 1730 IST of 14-08-2025 :

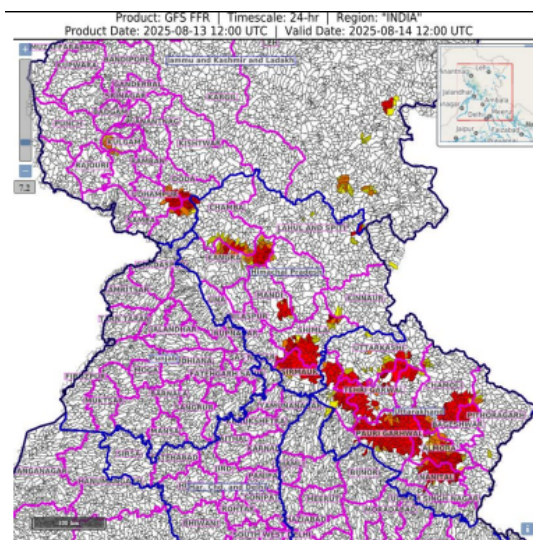
Low to Moderate flash flood risk likely over few watersheds & neighbourhoods of following Met Subdivisions during next 24 hours.

Himachal Pradesh - Chamba, Kangra, Kullu, Mandi, Shimla and Sirmour districts.

Uttarakhand - Almora, Bageshwar, Chamoli, Dehradun, Nainital, Pauri Garhwal, Pithoragarh, Rudrapur, Tehri Garwal and Uttarkashi districts.

Jammu & Kashmir and Ladakh - Doda, Kathua, Kulgam and Udhampur districts

Surface runoff/ Inundation may occur at some fully saturated soils & low-lying areas over Area of Concern (AoC) as shown in map due to expected rainfall occurrence in next 24 hours

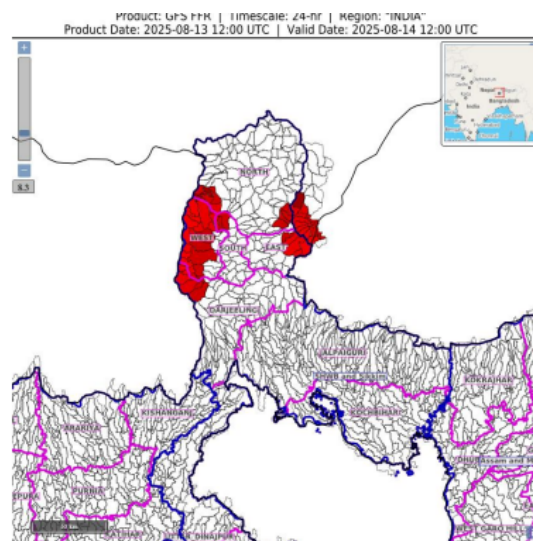


24 hours Outlook for the Flash Flood Risk (FFR) till 1730 IST of 14-08-2025 :

Low to Moderate flash flood risk likely over few watersheds & neighbourhoods of following Met Subdivisions during next 24 hours.

Sub-Himalayan West Bengal & Sikkim - East Sikkim, North Sikkim, West Sikkim, Darjeeling districts.

Surface runoff/ Inundation may occur at some fully saturated soils & low-lying areas over Area of Concern (AoC) as shown in map due to expected rainfall occurrence in next 24 hours.



24 hours Outlook for the Flash Flood Risk (FFR) till 1730 IST of 14-08-2025 :

Low to Moderate flash flood risk likely over few watersheds & neighbourhoods of following Met Subdivisions during next 24 hours.

Coastal Andhra Pradesh & Yanam - Kurnool, Guntur and Prakasam districts.

North Interior Karnataka - Bidar and Gulbarga districts.

Telangana - Nirmal, Mahabubnagar, Nagarkurnool, Wanaparthy and Jogulamba Gadwal districts.

Marathwada - Latur, Bid, Osmanabad, Hindoli, Jalna

***Red color warning does not mean "Red Alert" Red color warning means "Take Action"**

Forecast and warning for any day is valid from 0830 hours IST of day till 0830 hours IST of next day

For more details kindly visit <https://mausam.imd.gov.in> or contact 011-2434-4599

(Service to the nation since 1875)

and Nanded districts.

Madhya Maharashtra – Ahmednagar, Sholapur and Satara districts.

Surface runoff/ Inundation may occur at some fully saturated soils & low-lying areas over Area of Concern (AoC) as shown in map due to expected rainfall occurrence in next 24 hours.

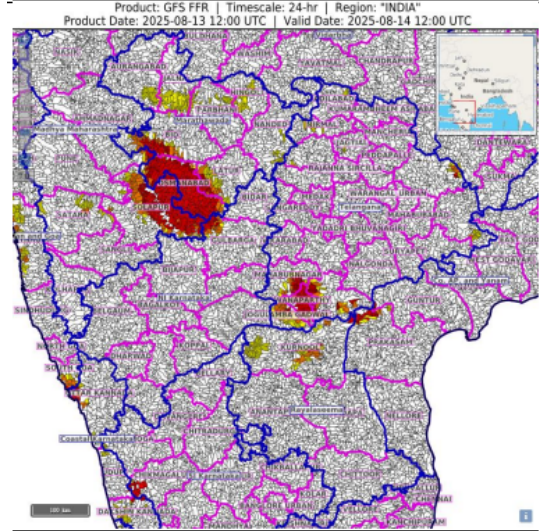




Table-1

7 Days Rainfall Forecast

S.No.	Subdivision	13-Aug	14-Aug	15-Aug	16-Aug	17-Aug	18-Aug	19-Aug
		Day 1	Day 2	Day 3	Day 4	Day 5	Day 6	Day 7
1	ANDAMAN & NICOBAR ISLANDS	WS	WS	WS	WS	FWS	FWS	FWS
2	ARUNACHAL PRADESH	WS	FWS	SCT	SCT	SCT	SCT	FWS
3	ASSAM & MEHGHALAYA	WS	FWS	SCT	FWS	FWS	FWS	FWS
4	N. M. M. & T.	WS	WS	FWS	FWS	FWS	FWS	FWS
5	S.H. WEST BENGAL & SIKKIM	WS	WS	FWS	FWS	WS	WS	WS
6	GANGETIC WEST BENGAL	FWS	FWS	FWS	SCT	FWS	FWS	FWS
7	ODISHA	WS	WS	FWS	FWS	FWS	FWS	FWS
8	JHARKHAND	FWS	FWS	SCT	SCT	FWS	FWS	FWS
9	BIHAR	WS	FWS	SCT	SCT	SCT	SCT	SCT
10	EAST UTTAR PRADESH	WS	SCT	SCT	ISOL	ISOL	SCT	SCT
11	WEST UTTAR PRADESH	FWS	WS	FWS	FWS	SCT	SCT	SCT
12	UTTARAKHAND	WS	WS	FWS	WS	WS	FWS	FWS
13	HARYANA, CHD & DELHI	FWS	FWS	FWS	SCT	SCT	SCT	SCT
14	PUNJAB	SCT	FWS	FWS	SCT	SCT	SCT	SCT
15	HIMACHAL PRADESH	WS	WS	WS	FWS	FWS	WS	FWS
16	JAMMU AND KASHMIR AND LADAKH	FWS	WS	WS	SCT	SCT	FWS	FWS
17	WEST RAJASTHAN	ISOL	ISOL	ISOL	SCT	SCT	FWS	SCT
18	EAST RAJASTHAN	ISOL	SCT	SCT	FWS	FWS	FWS	SCT
19	WEST MADHYA PRADESH	FWS	WS	WS	WS	WS	FWS	FWS
20	EAST MADHYA PRADESH	FWS	WS	WS	WS	WS	WS	WS
21	GUJRAT REGION	SCT	FWS	WS	WS	WS	WS	WS
22	SAURASHTRA & KUTCH	SCT	SCT	SCT	FWS	FWS	WS	WS
23	KONKAN & GOA	WS	WS	WS	WS	WS	WS	WS
24	MADHYA MAHARASHTRA	SCT	SCT	SCT	SCT	FWS	FWS	FWS
25	MARATHWADA	FWS	FWS	SCT	SCT	FWS	FWS	FWS
26	VIDARBHA	WS	WS	WS	WS	WS	WS	WS
27	CHATTISGARH	FWS	WS	WS	WS	WS	WS	WS
28	COASTAL ANDHRA PRADESH	WS	FWS	FWS	SCT	FWS	FWS	FWS
29	TELANGANA	WS	WS	WS	WS	WS	WS	WS
30	RAYALASEEMA	WS	FWS	SCT	SCT	SCT	FWS	SCT
31	TAMILNADU & PUDUCHERRY	ISOL	ISOL	ISOL	ISOL	ISOL	ISOL	ISOL
32	COSTAL KARNATAKA	WS	WS	WS	WS	WS	WS	WS
33	NORTH INTERIOR KARNATAKA	WS	WS	WS	WS	WS	FWS	FWS
34	SOUTH INTERIOR KARNATAKA	WS	WS	FWS	FWS	FWS	FWS	SCT
35	KERALA	WS	WS	WS	WS	WS	WS	WS
36	LAKSHDWEEP	WS	WS	WS	FWS	FWS	FWS	FWS

Legend	Category	%Stations
WS	Widespread/Most Places	76-100
FWS	Fairly Widespread/Many Places	51-75
SCT	Scattered/ A Few Places	26-50
ISOL	Isolated Places	1-25
DRY	No Rain	0

*Red color warning does not mean "Red Alert" Red color warning means "Take Action"

Forecast and warning for any day is valid from 0830 hours IST of day till 0830 hours IST of next day

For more details kindly visit <https://mausam.imd.gov.in> or contact 011-2434-4599

(Service to the nation since 1875)

Fig. 1: Maximum Temperatures Dated 2025-08-13

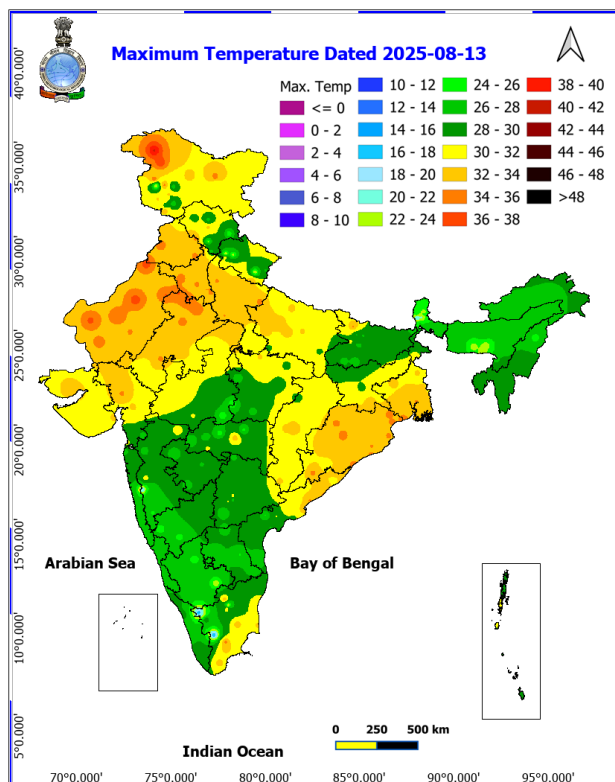


Fig. 2: Departure of Maximum Temp. Dated 2025-08-13

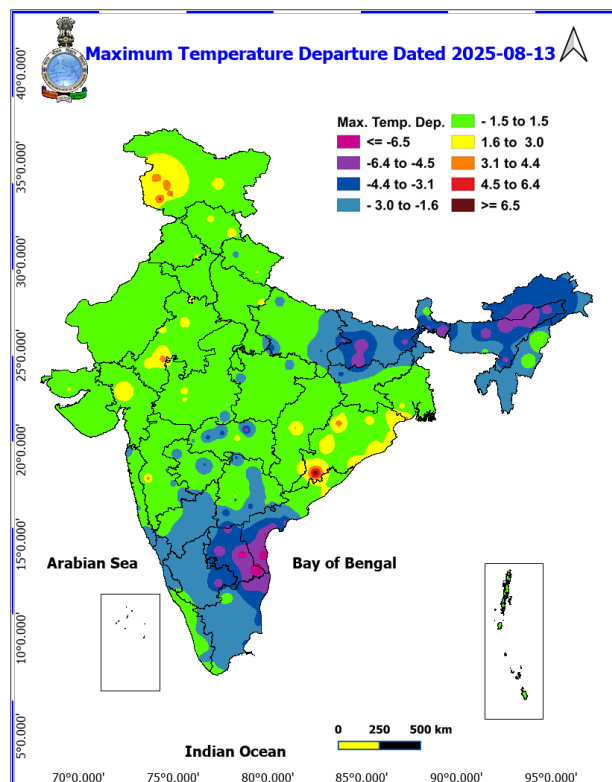


Fig. 3: Minimum Temperatures Dated 2025-08-13

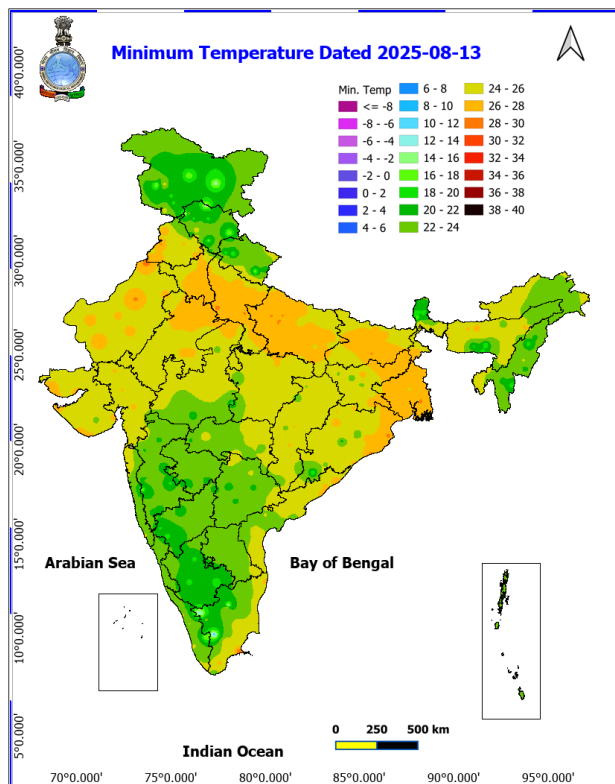
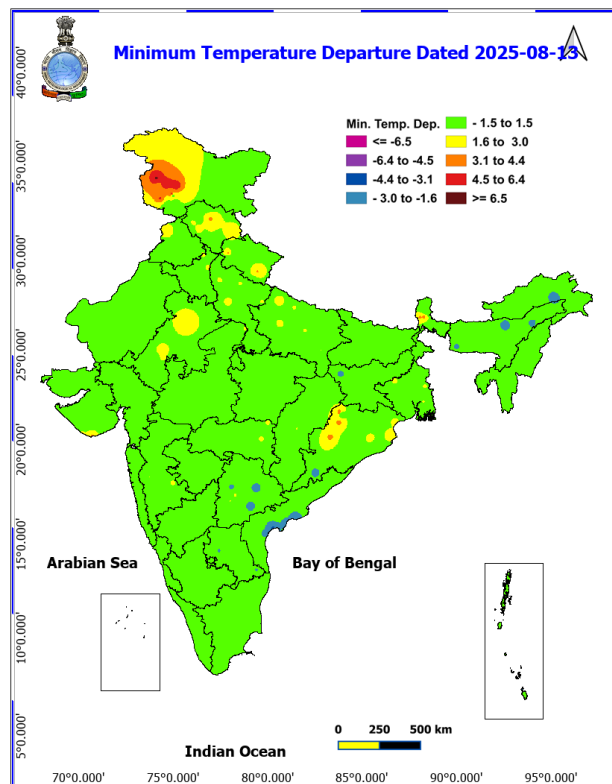
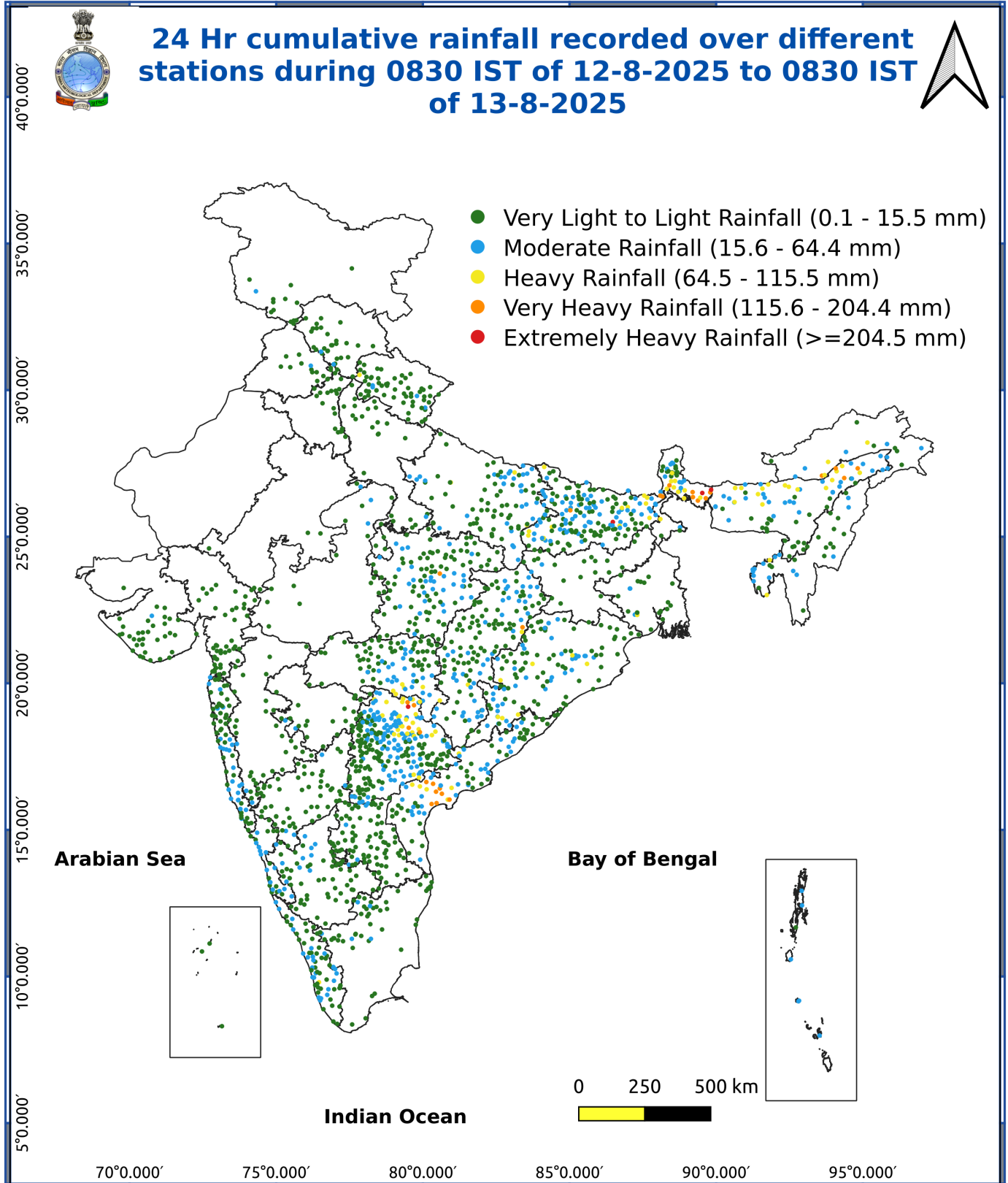


Fig. 4: Departure of Minimum Temp. Dated 2025-08-13





*Red color warning does not mean "Red Alert" Red color warning means "Take Action"

Forecast and warning for any day is valid from 0830 hours IST of day till 0830 hours IST of next day

For more details kindly visit <https://mausam.imd.gov.in> or contact 011-2434-4599

(Service to the nation since 1875)

Impact & Action Suggested due to

Extremely heavy rainfall at isolated places over Himachal Pradesh, Uttarakhand, Bihar, Coastal Andhra Pradesh & Yanam on 13th; Telangana on 13th & 14th August.

Very heavy rainfall over Jammu- Kashmir on 14th & 15th; Himachal Pradesh, East Madhya Pradesh, Odisha on 13th & 14th; Uttarakhand during 13th-17th; West Uttar Pradesh during 13th -15th; East Uttar Pradesh, Arunachal Pradesh, Rayalaseema, Sub-Himalayan West Bengal & Sikkim, Marathawada on 13th; Assam & Meghalaya on 13th & 16th; Coastal Andhra Pradesh & Yanam on 14th; Telangana during 15th-17th; Coastal Karnataka on 18th & 19th; West Madhya Pradesh on 13th, 15th & 16th; Vidarbha on 13th, 14th, 17th, 18th; Chhattisgarh during 13th-17th; Konkan & Goa, ghat areas of Madhya Maharashtra during 16th-19th August.

Impact Expected

- Localized Flooding of roads, water logging in low lying areas and closure of underpasses mainly in urban areas of the above region.
- Occasional reduction in visibility due to heavy rainfall.
- Disruption of traffic in major cities due to water logging in roads leading to increased travel time.
- Minor damage to kutcha roads.
- Possibilities of damage to vulnerable structure.
- Localized Landslides/Mudslides/landslips/mudslips/landsinks/mudsinks.
- Damage to horticulture and standing crops in some areas due to inundation.
- It may lead to riverine flooding in some river catchments (for riverine flooding please visit Web page of CWC)

Action Suggested

- Check for traffic congestion on your route before leaving for your destination.
- Follow any traffic advisories that are issued in this regard.
- Avoid going to areas that face the water logging problems often.
- Avoid staying in vulnerable structure.

Agromet advisories for various parts of the country

Inputs for Press Release

Agromet advisories for likely impact of Heavy / Heavy to Very Heavy Rainfall

(Based on the IBF and advisories issued by different AMFUs)

- In **Sub-Himalayan West Bengal**, make provision to drain out excess water from rice, ginger, vegetable fields and fruit orchards in **Hill Zone** and *aman* paddy and vegetable fields in **Terai Zone**. Cover the chilli seedlings with plastic to protect them from heavy rains in **Terai Zone**.
- In **Bihar**, make provisions to drain out excess water from standing crops such as maize, nurseries of onion, chilli, and cauliflower in **North West Alluvial Plain Zone**; maize, finger millet, ragi, kodo, sava, china, etc. in **North East Alluvial Zone**.
- In **Odisha**, make arrangements for draining out excess water from the fields of pulses, maize, groundnut and vegetables in **South Eastern Ghat region**.
- In **Jammu and Kashmir**, do not allow water to stagnate in fields of maize, pulses, cowpea, bajra and vegetables in **Sub Tropical Zone**. Proper drainage should be ensured in the fields of paddy, maize, Pulses, horticultural and vegetable crops in **Intermediate Zone**.
- In **Uttarakhand**, make necessary arrangements to drain out excess water from the fields of already sown / transplanted rice, sugarcane, maize, black gram, green gram, groundnut, pigeon pea, finger millet, soybean and vegetables in **Bhabar and Terai Zone**; and from barnyard millet, finger millet, green gram and black gram

***Red color warning does not mean "Red Alert" Red color warning means "Take Action"**

Forecast and warning for any day is valid from 0830 hours IST of day till 0830 hours IST of next day

For more details kindly visit <https://mausam.imd.gov.in> or contact 011-2434-4599

(Service to the nation since 1875)

in **Sub Humid Sub Tropic Zone**. In **Hill Zone**, strengthen the bunds to prevent surface runoff of water. Postpone sowing of vegetable pea till soil attains optimum moisture level. Maintain proper drainage channels in vegetable and crop fields. Undertake harvesting of matured capsicum fruits. Postpone sowing of vegetable pea until the soil attains optimum moisture, especially under excessive wet soil conditions.

- In **Himachal Pradesh**, provide proper drainage channels in rice, maize, kidney beans, finger millet, apple, pomegranate and vegetable fields in **Sub Montane and Low Hills Sub Tropical Zone**; paddy, maize, pulses, plantation and vegetable crops in **High Hills Sub Temperate Wet Zone**; and maize, ginger, turmeric and vegetable fields in **Mid Hills Sub Humid Zone**.
- In **Uttar Pradesh**, maintain proper drainage in fields of rice, pigeon pea, sugarcane and vegetable crops in **South Western Semi Arid Zone**, make necessary arrangements for drainage of excess water from the fields pigeon pea, chilli and onion in **Bundelkhand Zone**; autumn sugarcane, spring sugarcane, paddy, pigeon pea, maize, green gram, black gram and vegetables in South Western Semi-Arid Zone; and pigeon pea, soybean, maize, groundnut, green gram, black gram and barnyard millet in Eastern Plain Zone.
- In **Madhya Pradesh**, provide adequate drainage in the fields of maize, soybean, blackgram, cotton, and pigeon pea in **Vindhyan Plateau Zone**; maize, soybean, cotton, sugarcane and vegetables in **Satpura Plateau Zone**; rice, soybean, maize, sugarcane and vegetables in **Central Narmada Valley Zone** and soybean, pigeon pea, cotton and vegetables in **Nimar Valley Zone**.
- In **Chhattisgarh**, drain out excess water from rice nurseries, fields of soybean, pigeon pea, green gram, black gram, maize, sugarcane and vegetables in **Plain Zone**; fields of rice, minor millets, maize, pulses and oilseeds in **Bastar Plateau Zone** and fields of pigeon pea, vegetables and transplanted rice in **North Hill Zone**.
- In **Arunachal Pradesh**, ensure proper drainage in rice, maize, finger millet, soybean, vegetables, and fruit orchards to avoid waterlogging. Provide strong support to fruit-bearing plants to prevent them from bending or breaking during heavy rains.
- In **Assam**, to prevent waterlogging, ensure proper drainage in *Sali* rice, green gram and pigeon pea fields and banana orchards in **Lower Brahmaputra Valley Zone**; *Sali* rice and sugarcane fields in **North Bank Plain Zone** and *Sali* rice fields in **Upper Brahmaputra Valley Zone**.
- In **Meghalaya**, ensure proper drainage in rice, maize, turmeric, chilli, okra and bitter gourd fields to prevent waterlogging. Provide staking/support to tall and fragile crops like banana, papaya, bottle gourd etc. to prevent lodging.
- In **Tamil Nadu**, ensure proper drainage in sorghum fields to prevent waterlogging, especially in heavy soils and low-lying areas. Ensure proper drainage around the coconut plants to avoid root rot.
- In **Andhra Pradesh**, provide adequate drainage in the fields of paddy, maize, groundnut, cotton, blackgram, greengram, and pigeon pea in **Krishna Godavari region**.
- In **Telangana**, drain out excess water from rice nurseries and recently transplanted rice as well as from fields of cotton, maize, red gram, soybean, sugarcane, and vegetables.

Livestock / Fishery

- Keep the animals inside the shed during heavy rainfall and provide them balanced feed.
- Store feed and fodder in a safe place to prevent spoilage.
- Construct an outlet with proper netting around the ponds to drain out excess water, thereby preventing fish from escaping in case of overflow.

Agromet advisories for likely impact of Thunderstorm / Gusty Winds / Squally Winds

(Based on the IBF and advisories issued by different AMFUs)

- Provide mechanical support to horticultural crops and staking or support to vegetables and young fruit plants / fruit-bearing plants to avoid lodging due to strong winds.

Legends & abbreviations:

Region wise classification of meteorological Sub-Divisions:

Northwest India: Western Himalayan Region (Jammu-Kashmir-Ladakh-Gilgit-Baltistan-Muzaffarabad, Himachal Pradesh and Uttarakhand); Punjab, Haryana-Chandigarh-Delhi; West Uttar Pradesh, East Uttar Pradesh, West

*Red color warning does not mean "Red Alert" Red color warning means "Take Action"

Forecast and warning for any day is valid from 0830 hours IST of day till 0830 hours IST of next day

For more details kindly visit <https://mausam.imd.gov.in> or contact 011-2434-4599

(Service to the nation since 1875)

Rajasthan and East Rajasthan.

Central India: West Madhya Pradesh, East Madhya Pradesh, Vidarbha and Chhattisgarh.

East India: Bihar, Jharkhand, Sub-Himalayan West Bengal & Sikkim; Gangetic West Bengal, Odisha and Andaman & Nicobar Islands.

Northeast India: Arunachal Pradesh, Assam & Meghalaya and Nagaland, Manipur, Mizoram & Tripura.

West India: Gujarat Region, Saurashtra & Kutch, Konkan & Goa, Madhya Maharashtra and Marathawada.

South India: Coastal Andhra Pradesh & Yanam, Telangana, Rayalaseema, Coastal Karnataka, North Interior Karnataka, South Interior Karnataka, Kerala & Mahe, Tamil Nadu, Puducherry & Karaikal and Lakshadweep.

LEGENDS

- 1 अंडमान और निकोबार द्वीप समुह
- 2 अरुणाचल प्रदेश
- 3 असम और मेघालय
- 4 नागालैंड मनीपुर मीजोरम और त्रिपुरा
- 5 उप हिमालय पश्चिम बंगाल एवं सिक्किम
- 6 पश्चिम बंगाल
- 7 ओडिसा
- 8 झारखंड
- 9 बिहार
- 10 पूर्वी उत्तर प्रदेश
- 11 पश्चिम उत्तर प्रदेश
- 12 उत्तराखंड
- 13 हरियाणा चंडीगढ़ एवं दिल्ली
- 14 पंजाब
- 15 हिमाचल प्रदेश
- 16 जम्मू एवं कश्मीर एवं लद्दाख
- 17 पश्चिम राजस्थान
- 18 पूर्वी राजस्थान
- 19 पश्चिम मध्य प्रदेश
- 20 पूर्वी मध्य प्रदेश
- 21 गुजरात क्षेत्र
- 22 सौराष्ट्र एवं कच्छ
- 23 कोंकण एवं गोवा
- 24 मध्य महाराष्ट्र
- 25 मराठावाड़ा
- 26 विदर्भ
- 27 छत्तीसगढ़
- 28 तटीय आंध्र प्रदेश एवं यनम
- 29 तेलंगाना
- 30 रायलसीमा
- 31 तमिलनाडु, पुदुचेरी एवं कराईकल
- 32 तटिय कर्नाटक
- 33 आंतरिक उत्तरी कर्नाटक
- 34 आंतरिक दक्षिणी कर्नाटक
- 35 केरल एवं माहे
- 36 लक्षद्वीप



1. Andaman & Nicobar Islands
2. Arunachal Pradesh
3. Assam & Meghalaya
4. Nagaland, Manipur, Mizoram & Tripura
5. Sub-Himalayan West Bengal & Sikkim
6. Gangetic West Bengal
7. Orissa
8. Jharkhand
9. Bihar
10. East Uttar Pradesh
11. West Uttar Pradesh
12. Uttarakhand
13. Haryana, Chd & Delhi
14. Punjab
15. Himachal Pradesh
16. Jammu & Kashmir and Ladakh
17. West Rajasthan
18. East Rajasthan
19. West Madhya Pradesh
20. East Madhya Pradesh
21. Gujarat
22. Saurashtra
23. Konkan & Goa
24. Madhya Maharashtra
25. Marathawada
26. Vidharbha
27. Chhattisgarh
28. Coastal Andhra Pradesh & Yanam
29. Telangana
30. Rayalaseema
31. Tamilnadu, Puducherry & Karaikal
32. Coastal Karnataka
33. North Interior Karnataka
34. South Interior Karnataka
35. Kerala & Mahe
36. Lakshadweep

SPATIAL DISTRIBUTION (% of Stations reporting)

% Stations	Category	% Stations	Category
76-100	Widespread (WS/Most Places)	26-50	Scattered (SCT/ A Few Places)
51-75	Fairly Widespread (FWS/ Many Places)	1-25	Isolated (ISOL)

Subdivision Colour

- NO WARNING
- WATCH (BE UPDATED)
- ALERT (BE PREPARED TO TAKE ACTION)
- WARNING (TAKE ACTION)

Probabilistic Forecast

Terms	Probability of Occurrence (%)
Unlikely	< 25
Likely	25 - 50
Very Likely	50 - 75
Most Likely	> 75

-  Heavy Rain
-  Very Heavy Rain
-  Extremely Heavy Rain
-  Heavy Snow
-  Thunderstorm & Lightning
-  Hailstorm
-  Dust Storm
-  Dust Raising Winds
-  Strong surface winds
-  Heat Wave
-  Hot Day
-  Warm Night
-  Cold Wave
-  Cold Day
-  Ground Frost
-  FOG Fog
-  Hot & Humid

*Red color warning does not mean "Red Alert" Red color warning means "Take Action"

Forecast and warning for any day is valid from 0830 hours IST of day till 0830 hours IST of next day

For more details kindly visit <https://mausam.imd.gov.in> or contact 011-2434-4599

(Service to the nation since 1875)

LEGENDS

WARNING

WARNING (TAKE ACTION)
ALERT (BE PREPARED)
WATCH (BE UPDATED)
NO WARNING (NO ACTION)

Probabilistic Forecast

Terms	Probability of Occurrence (%)
Unlikely	< 25
Likely	25 - 50
Very Likely	50 - 75
Most Likely	> 75



Heavy: 64.5 to 115.5 mm/cm *
Very Heavy: 115.6 to 204.4 mm/cm *
Extremely Heavy: > 204.4 mm/cm *



When maximum temperature of a station reaches $\geq 40^{\circ}\text{C}$ for plains and $\geq 30^{\circ}\text{C}$ for hilly regions
(a) Based on Departure from normal

Heat Wave: Maximum Temperature Departure from normal 4.5°C to 6.4°C .
Severe Heat Wave: Maximum Temperature Departure from normal $\geq 6.5^{\circ}\text{C}$

(b). Based on Actual maximum temperature

Heat Wave: When actual maximum temperature $\geq 45^{\circ}\text{C}$.
Severe Heat Wave: When actual maximum temperature $\geq 47^{\circ}\text{C}$

(c). Criteria for heat wave for coastal stations

When maximum temperature departure is $> 4.5^{\circ}\text{C}$ from normal. Heat Wave may be described provided maximum temperature $\geq 37^{\circ}\text{C}$



When maximum temperature remains 40°C

Warm Night: When minimum temperature departure 4.5°C to 6.4°C .
Severe Warm Night: When minimum temperature departure $> 6.4^{\circ}\text{C}$.



When minimum temperature of a station $\leq 10^{\circ}\text{C}$ for plains and $\leq 0^{\circ}\text{C}$ for hilly regions.

(a). Based on departure

Cold Wave: Minimum Temperature Departure from normal -4.5°C to -6.4°C .
Severe Cold Wave: Minimum Temperature Departure from normal $\leq -6.5^{\circ}\text{C}$

(b) Based on actual Minimum Temperature (for Plains only)

Cold Wave: When Minimum Temperature is $\leq 4.0^{\circ}\text{C}$
Severe Cold Wave: When Minimum Temperature is $\leq 2.0^{\circ}\text{C}$

(c) For Coastal Stations

When Minimum Temperature departure is $\leq -4.5^{\circ}\text{C}$ & actual Minimum Temperature is $\leq 15^{\circ}\text{C}$



When minimum temperature of a station $\leq 10^{\circ}\text{C}$ for plains and $\leq 0^{\circ}\text{C}$ for hilly regions
Based on departure

Cold Day: Maximum Temperature Departure from normal -4.5°C to -6.4°C .
Severe Cold Day: Maximum Temperature Departure from normal $\leq -6.5^{\circ}\text{C}$



Phenomenon of small droplets suspended in air and the horizontal visibility $< 1\text{km}$

Moderate Fog: When the visibility between 500-200 metres
Dense Fog: when the visibility between 50-200 metres
Very Dense Fog: when the visibility < 50 metres



Sudden electrical discharges manifested by a flash of light (Lightning) and a sharp rumbling sound (thunder)



An ensemble of particles of dust or sand energetically lifted to great heights by a strong and turbulent wind.



Ice deposits on ground

Air temperature $\leq 4^{\circ}\text{C}$ (over Plains)



A strong wind that rises suddenly, lasts for at least 1 minute.

Moderate: Wind speed 52-61 kmph
Severe: Wind speed 62-87 kmph
Very Severe: Wind speed > 87 kmph



Effect of various waves in the sea over specific area

Rough to very rough: Wind speed 41-62 kmph (22-33 knots) & Wave height 2.5-6 metre
High to very high: Wind speed 63-117 kmph (34-63 knots) & Wave height 6-14 metre
Phenomenal: Wind speed > 117 kmph (> 63 knots) & Wave height > 14 metre



Cyclonic Storm: Wind speed 62-87 kmph (34-47 knots)

Severe Cyclonic Storm: Wind speed 88-117 kmph (48-63 knots)
Very Severe Cyclonic Storm: Wind speed 118-165 kmph (64-89 knots)
Extremely Severe Cyclonic Storm: Wind speed 166-220 kmph (90-119 knots)
Super Cyclone Storm: Wind speed > 220 kmph (> 119 knots)

*Red color warning does not mean "Red Alert" Red color warning means "Take Action"

Forecast and warning for any day is valid from 0830 hours IST of day till 0830 hours IST of next day

For more details kindly visit <https://mausam.imd.gov.in> or contact 011-2434-4599

(Service to the nation since 1875)