

2025-09-15

Time of Issue: 19:40:00 hours IST
(NIGHT)

ALL INDIA WEATHER SUMMARY AND FORECAST BULLETIN

Significant Weather Features

Weather Forecast and Warnings

Northeast India:

Light/moderate rain/thunderstorm at most/many places with isolated **heavy rainfall** likely over Arunachal Pradesh during 15th-17th & on 20th & 21st; Assam & Meghalaya, Nagaland, Manipur, Mizoram & Tripura during 15th-21st September with **very heavy falls over Arunachal Pradesh on 15th & 16th; Nagaland and Assam & Meghalaya on 15th September.**

South Peninsular India:

Light to moderate rain/thunderstorm & gusty winds (speed 30-40 kmph) at many/some places with isolated **heavy rainfall** likely over Tamil Nadu during 15th-19th; Coastal Andhra Pradesh & Yanam on 15th; Rayalaseema, Telangana & North Interior Karnataka during 15th-17th; Coastal & South Interior Karnataka on 17th September.

Strong surface winds (speed reaching 30-40 kmph) very likely over Coastal Andhra Pradesh & Yanam and Rayalaseema during next 5 days.

East & Central India:

Light to moderate rain/thunderstorm at most/many places with isolated **heavy rainfall** likely over Madhya Pradesh & Odisha on 15th; Vidarbha, Chhattisgarh, Gangetic West Bengal on 15th & 16th; Andaman & Nicobar Islands on 15th & during 17th-20th; Sub-Himalayan West Bengal & Sikkim, Jharkhand during 15th-18th; Bihar during 15th-19th September with isolated **very heavy falls over Sub-Himalayan West Bengal & Sikkim during 15th-17th; Bihar & Jharkhand on 15th & 16th September.**

West India:

Isolated **Extremely heavy rainfall (≥21 cm)** likely over Konkan and Madhya Maharashtra on 15th September.

Light to moderate rain/thunderstorm at many/some places with **isolated heavy rainfall** likely over Konkan & Goa, Madhya Maharashtra during 15th-18th; Marathawada during 15th-17th September with **very heavy falls over Marathawada on 15th & 16th and Konkan & Goa, Madhya Maharashtra on 16th September.**

Northwest India:

Light to moderate rain/thunderstorm at some/isolated places with **isolated heavy rainfall** likely over Himachal Pradesh & Uttarakhand on 15th & 16th; West Uttar Pradesh on 15th; East Uttar Pradesh during 15th-19th September with **very heavy falls over Uttarakhand & East Uttar Pradesh on 15th September.**

***Red color warning does not mean "Red Alert" Red color warning means "Take Action"**

Forecast and warning for any day is valid from 0830 hours IST of day till 0830 hours IST of next day

For more details kindly visit <https://mausam.imd.gov.in> or contact 011-2434-4599

(Service to the nation since 1875)



Main Weather Observations:

❖ **Rainfall distribution** (from 0830 hours IST to 1730 hours IST of today): **at most places** over Sub-Himalayan West Bengal & Sikkim, Konkan & Goa, Nagaland, Manipur, Mizoram & Tripura, Bihar, Arunachal Pradesh, Marathwada, Gangetic West Bengal, Chhattisgarh and Odisha; **at many places** over West Uttar Pradesh, Madhya Maharashtra, Tamilnadu Puducherry & Karaikal, Uttarakhand, Himachal Pradesh, Assam & Meghalaya, East Madhya Pradesh, Andaman & Nicobar Islands, Jharkhand, Coastal Karnataka, Kerala & Mahe, North Interior Karnataka, Coastal Andhra Pradesh & Yanam, Vidarbha, East Uttar Pradesh, West Madhya Pradesh and Lakshadweep; **Dry** over rest of the country.

❖ **Significant rainfall recorded(in cm)** (from 0830 hours IST to 1730 hours IST of today): **Andaman & Nicobar islands:** Car Nicobar (vecx) (dist Nicobar) 10, Hut Bay (dist South Andaman), Car Nicobar (dist Nicobar) 4 Each; **Gangetic west Bengal:** Sri Niketan (dist Birbhum) 7, Digha (dist North 24 Parganas), Berhampore (dist Murshidabad), Asansol (dist Paschim Bardhaman) 4 Each; **West Madhya Pradesh:** Raisen (dist Raisen) 5; **Assam & Meghalaya:** Goalpara (dist Goalpara) 5; **East Uttar Pradesh:** Bahraich (dist Bahraich) 4, Allahabad (dist Prayagraj) 3; **Odisha:** Keonjhar (dist Kendujhar) 4, Rourkela (dist Sundargarh) 3; **East Madhya Pradesh:** Satna (dist Satna) 3; **Vidarbha:** Nagpur-sonegaon Airport (dist Nagpur) 3; **Coastal Andhra Pradesh & Yanam:** Kakinada (dist Kakinada) 3; **Madhya Maharashtra:** Sangli (dist Sangli), Ahmednagar (dist Ahmednagar) 3 Each.

❖ **Heavy Rainfall observed** (from 0830 hours IST to 1730 hours IST of today): **Heavy rain** at isolated places over Andaman & Nicobar Islands and Gangetic West Bengal

❖ **Minimum Temperature Departures (as on 15-09-2025):** **markedly above normal(> 5.1°C)** at few places over Jammu-Kashmir Ladakh-Gilgit-Baltistan-Muzaffarabad, West Madhya Pradesh and East Madhya Pradesh; at isolated places over Assam & Meghalaya, Bihar, East Uttar Pradesh, West Uttar Pradesh and Himachal Pradesh. **appreciably above normal (3.1°C to 5.0°C)** at isolated places over Sub Himalayan West Bengal & Sikkim, Odisha, West Rajasthan, Gujarat Region and Saurashtra & Kutch. **above normal (1.6°C to 3.0°C)** at many places over Uttarakhand and Chhattisgarh; at few places over Haryana-Chandigarh-Delhi, Madhya Maharashtra, Vidarbha and Tamil Nadu, Puducherry & Karaikal; at isolated places over Andaman & Nicobar Islands, Gangetic West Bengal, Punjab, East Rajasthan, Marathwada and Coastal Andhra Pradesh & Yanam. **near normal (-1.5°C to 1.5°C)** at many places over Nagaland, Manipur, Mizoram & Tripura and Jharkhand; at most places over Konkan & Goa, Telangana, Rayalaseema, Coastal Karnataka, North Interior Karnataka, South Interior Karnataka, Kerala & Mahe and Lakshadweep. **The lowest minimum temperature** of 18.8°C is reported at MYSORE (KARNATAKA) over the Plains of India.

❖ **Maximum Temperature Departures (as on 15-09-2025):** **markedly above normal (> 5.1°C)** at few places over Jammu-Kashmir Ladakh-Gilgit-Baltistan-Muzaffarabad. **appreciably above normal (3.1°C to 5.0°C)** at isolated places over West Uttar Pradesh, Uttarakhand, East Madhya Pradesh, Tamil Nadu, Puducherry & Karaikal and Kerala & Mahe. **above normal (1.6°C to 3.0°C)** at few places over Haryana-Chandigarh-Delhi, Himachal Pradesh and Rayalaseema; at isolated places over Andaman & Nicobar Islands, East Uttar Pradesh, Punjab, West Madhya Pradesh, Gujarat Region, Saurashtra & Kutch, Madhya Maharashtra, Coastal Andhra Pradesh & Yanam and Telangana. **near normal (-1.5°C to 1.5°C)** at many places over Nagaland, Manipur, Mizoram & Tripura, West Rajasthan, Vidarbha, Coastal Karnataka and North Interior Karnataka; at most places over East Rajasthan, South Interior Karnataka and Lakshadweep; at few places over Arunachal Pradesh, Assam & Meghalaya, Sub Himalayan West Bengal & Sikkim, Gangetic West Bengal, Odisha, Jharkhand, Bihar, Marathwada and Chhattisgarh. **The highest maximum temperature** of 39.5°C is reported at MADURAI (A) (TAMIL NADU).

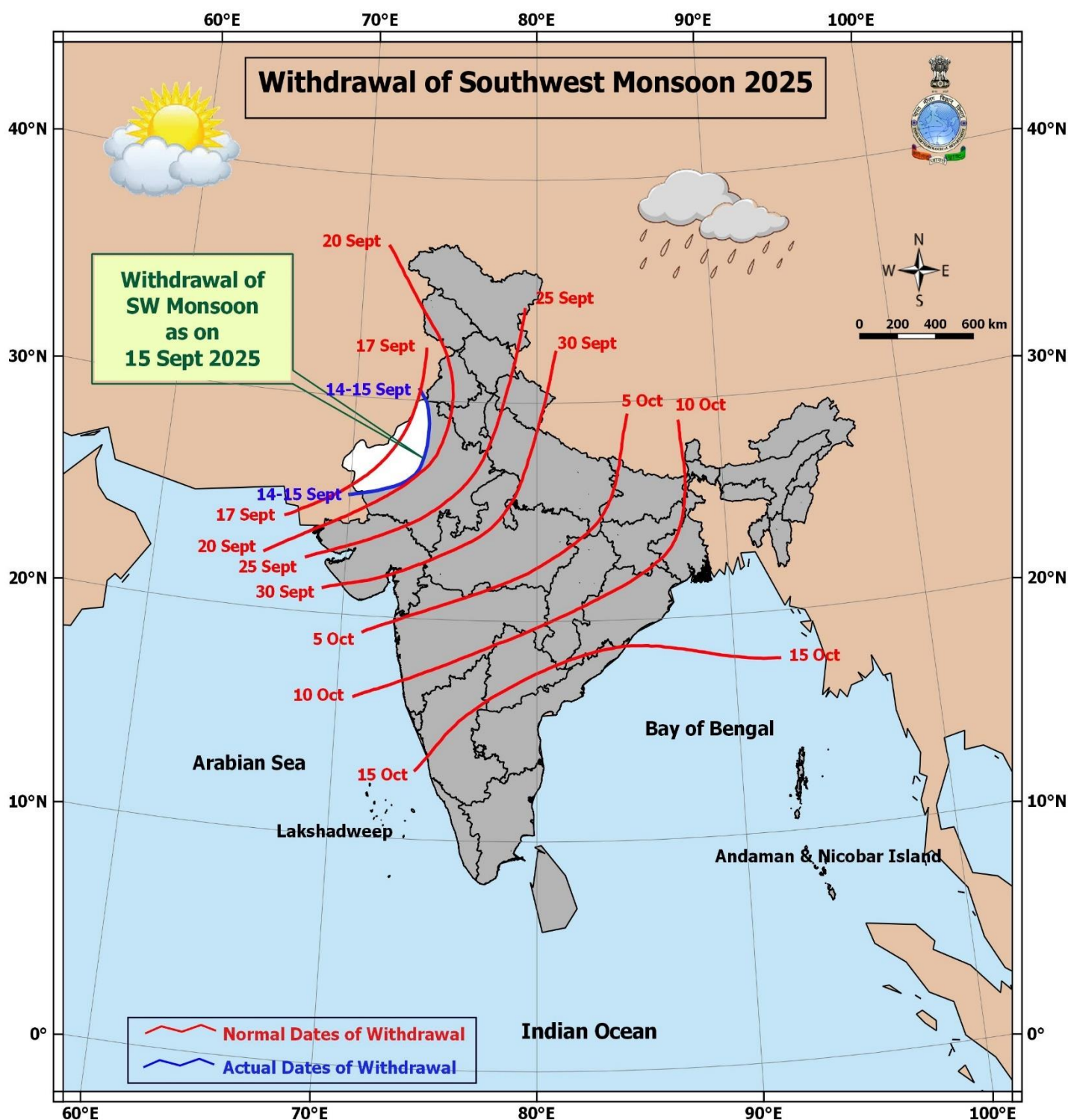


Meteorological Analysis (Based on 1730 hours IST)

- ❖ The **line of withdrawal of southwest monsoon** continues to pass through 30.5°N /73.5°E, Sri Ganganagar, Nagaur, Jodhpur, Barmer and 25.5°N /70°E. Conditions are favourable for further withdrawal of Southwest Monsoon from some more parts of Rajasthan and some parts of Punjab and Gujarat during next 2 days.
- ❖ The **upper air cyclonic circulation** over East Vidarbha & neighbourhood extending up to 3.1 km above mean sea level tilting southwestwards with height persists.
- ❖ The **upper air cyclonic circulation** over East Bihar & neighbourhood between 3.1 & 5.8 km above mean sea level persists.
- ❖ The **upper air cyclonic circulation** over central Assam at 1.5 km above mean sea level persists.
- ❖ The **upper air cyclonic circulation** over Meghalaya & neighbourhood between 3.1 & 4.5 km above mean sea level persists.
- ❖ The **upper air cyclonic circulation** over southeast Bay of Bengal extending upto 3.1 km above mean sea level persists.

Weather Outlook for subsequent 3 days

Scattered to fairly widespread rainfall likely over Western India.
Isolated to scattered rainfall likely over the rest parts of the country.

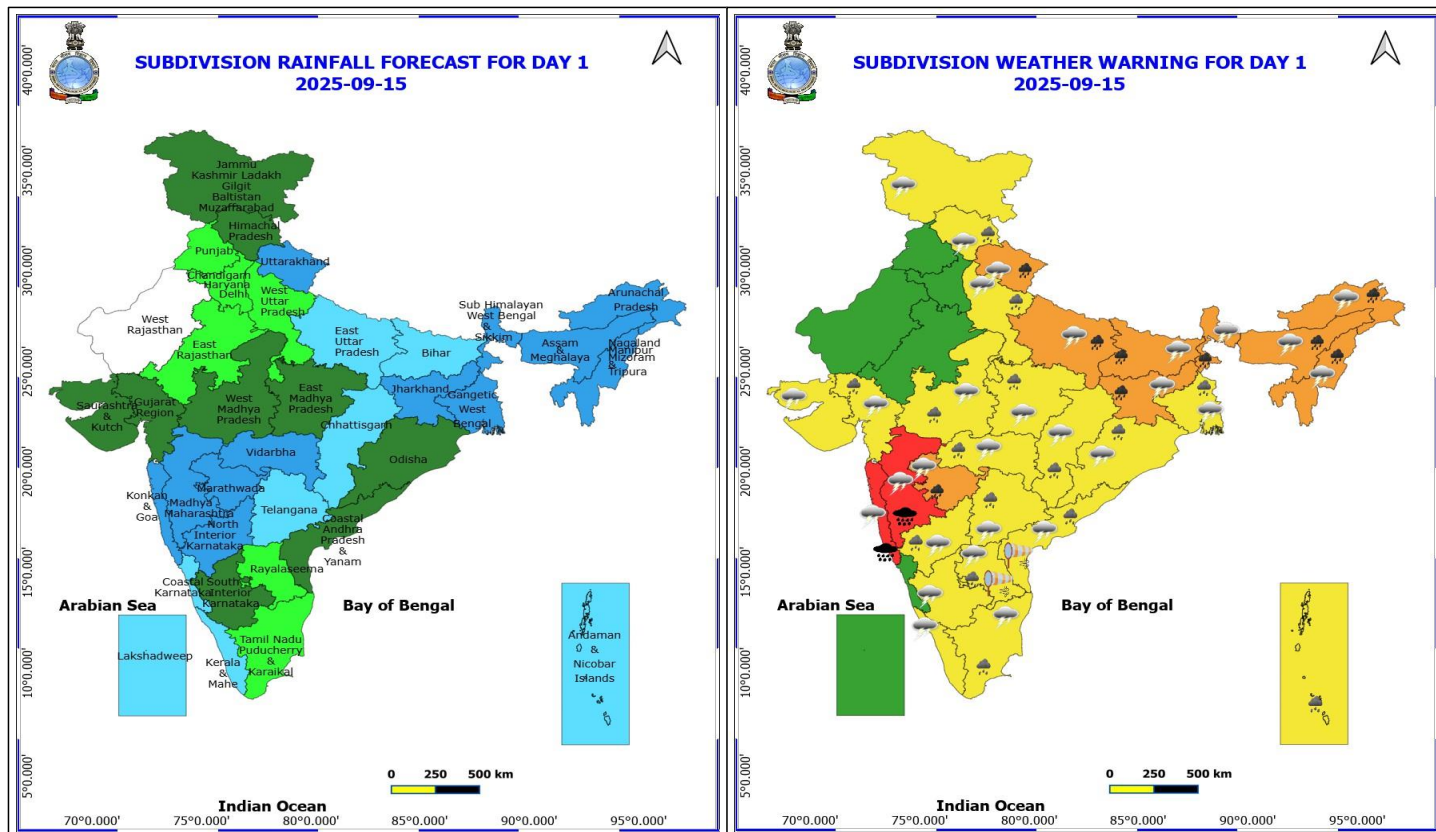


*Red color warning does not mean "Red Alert" Red color warning means "Take Action"

Forecast and warning for any day is valid from 0830 hours IST of day till 0830 hours IST of next day

For more details kindly visit <https://mausam.imd.gov.in> or contact 011-2434-4599

(Service to the nation since 1875)



15 September (Day 1)

- ❖ **Heavy to Very Heavy Rainfall with isolated Extremely Heavy Rainfall** very likely at isolated places over Konkan & Goa and Madhya Maharashtra.
- ❖ **Heavy to Very Heavy Rainfall** very likely at isolated places over Arunachal Pradesh, Assam & Meghalaya, Bihar, East Uttar Pradesh, Jharkhand, Marathwada, Nagaland, Manipur, Mizoram and Tripura, Sub Himalayan West Bengal & Sikkim and Uttarakhand.
- ❖ **Heavy Rainfall** very likely at isolated places over Andaman & Nicobar Islands, Andhra Pradesh, Chhattisgarh, Gangetic West Bengal, Gujarat Region, Himachal Pradesh, Madhya Pradesh, North Interior Karnataka, Odisha, Tamil Nadu Puducherry & Karaikal, Telangana, Vidarbha and West Uttar Pradesh.
- ❖ **Thunderstorm accompanied with lightning & gusty winds(30-40kmph)** very likely at isolated places over Bihar, Jammu-Kashmir-Ladakh-Gilgit-Baltistan-Muzaffarabad, Jharkhand, Odisha and West Bengal & Sikkim.
- ❖ **Thunderstorm accompanied with Lightning** very likely at isolated places over Andhra Pradesh, Arunachal Pradesh, Assam & Meghalaya, Chhattisgarh, Gujarat State, Himachal Pradesh, Interior Karnataka, Kerala & Mahe, Konkan & Goa, Madhya Pradesh, Maharashtra, Nagaland, Manipur, Mizoram and Tripura, Tamil Nadu Puducherry & Karaikal, Telangana, Uttar Pradesh, Uttarakhand and West Bengal & Sikkim.
- ❖ **Strong Surface Winds** very likely at isolated places over Andhra Pradesh.

Squally wind with speed reaching 45 kmph to 55 kmph gusting to 65 kmph is likely to prevail over some parts of southwest & few parts of westcentral Arabian Sea and along and off Somalia coast.

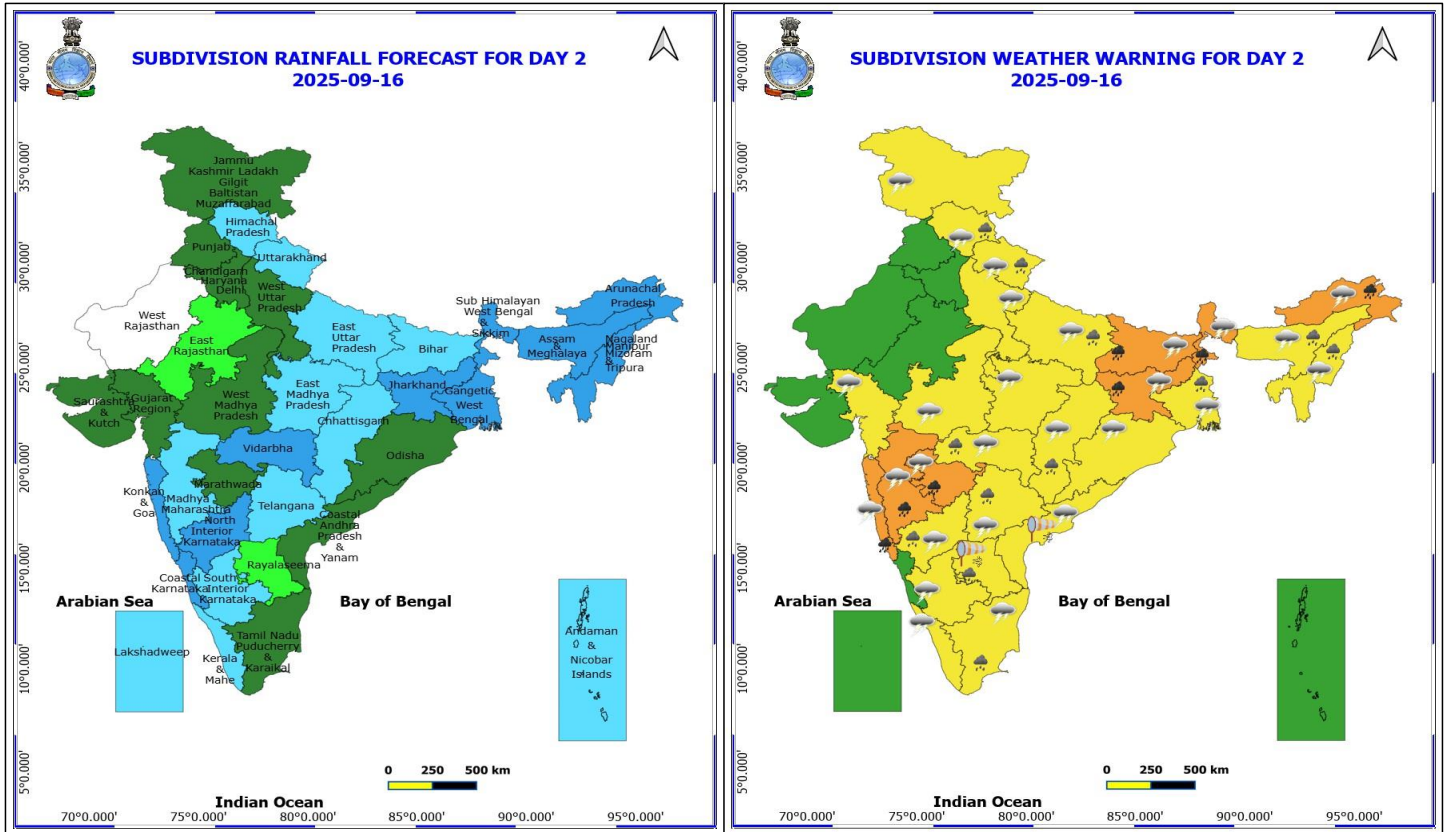
Squally weather with wind speed reaching 40 - 50 kmph gusting to 60 kmph likely to prevail over Gulf of Mannar & adjoining Comorin area and over some parts of southwest Bay of Bengal & along and off Sri Lanka coast, along & off Konkan-Goa coasts & adjoining sea areas, many parts of southeast Bay of Bengal, along and off West Bengal & adjoining north Odisha coasts.

***Red color warning does not mean "Red Alert" Red color warning means "Take Action"**

Forecast and warning for any day is valid from 0830 hours IST of day till 0830 hours IST of next day

For more details kindly visit <https://mausam.imd.gov.in> or contact 011-2434-4599

(Service to the nation since 1875)



16 September (Day 2)

- ❖ **Heavy to Very Heavy Rainfall** very likely at isolated places over Arunachal Pradesh, Bihar, Jharkhand, Konkan & Goa, Madhya Maharashtra, Marathwada and Sub Himalayan West Bengal & Sikkim.
- ❖ **Heavy Rainfall** very likely at isolated places over Assam & Meghalaya, Chhattisgarh, East Uttar Pradesh, Gangetic West Bengal, Himachal Pradesh, Nagaland, Manipur, Mizoram and Tripura, North Interior Karnataka, Rayalaseema, Tamil Nadu Puducherry & Karaikal, Telangana, Uttarakhand and Vidarbha.
- ❖ **Thunderstorm accompanied with lightning & gusty winds(30-40kmph)** very likely at isolated places over Bihar, Jammu-Kashmir-Ladakh-Gilgit-Baltistan-Muzaffarabad, Jharkhand, Odisha and West Bengal & Sikkim.
- ❖ **Thunderstorm accompanied with Lightning** very likely at isolated places over Arunachal Pradesh, Assam & Meghalaya, Chhattisgarh, Coastal Andhra Pradesh, Gangetic West Bengal, Gujarat Region, Himachal Pradesh, Interior Karnataka, Kerala & Mahe, Konkan & Goa, Madhya Pradesh, Maharashtra, Nagaland, Manipur, Mizoram and Tripura, Odisha, Tamil Nadu Puducherry & Karaikal, Telangana, Uttar Pradesh and Uttarakhand.
- ❖ **Strong Surface Winds** very likely at isolated places over Andhra Pradesh.

Squally wind with speed reaching 45 kmph to 55 kmph gusting to 65 kmph is likely to prevail over some parts of southwest & westcentral Arabian Sea and along and off Somalia, south Oman coasts.

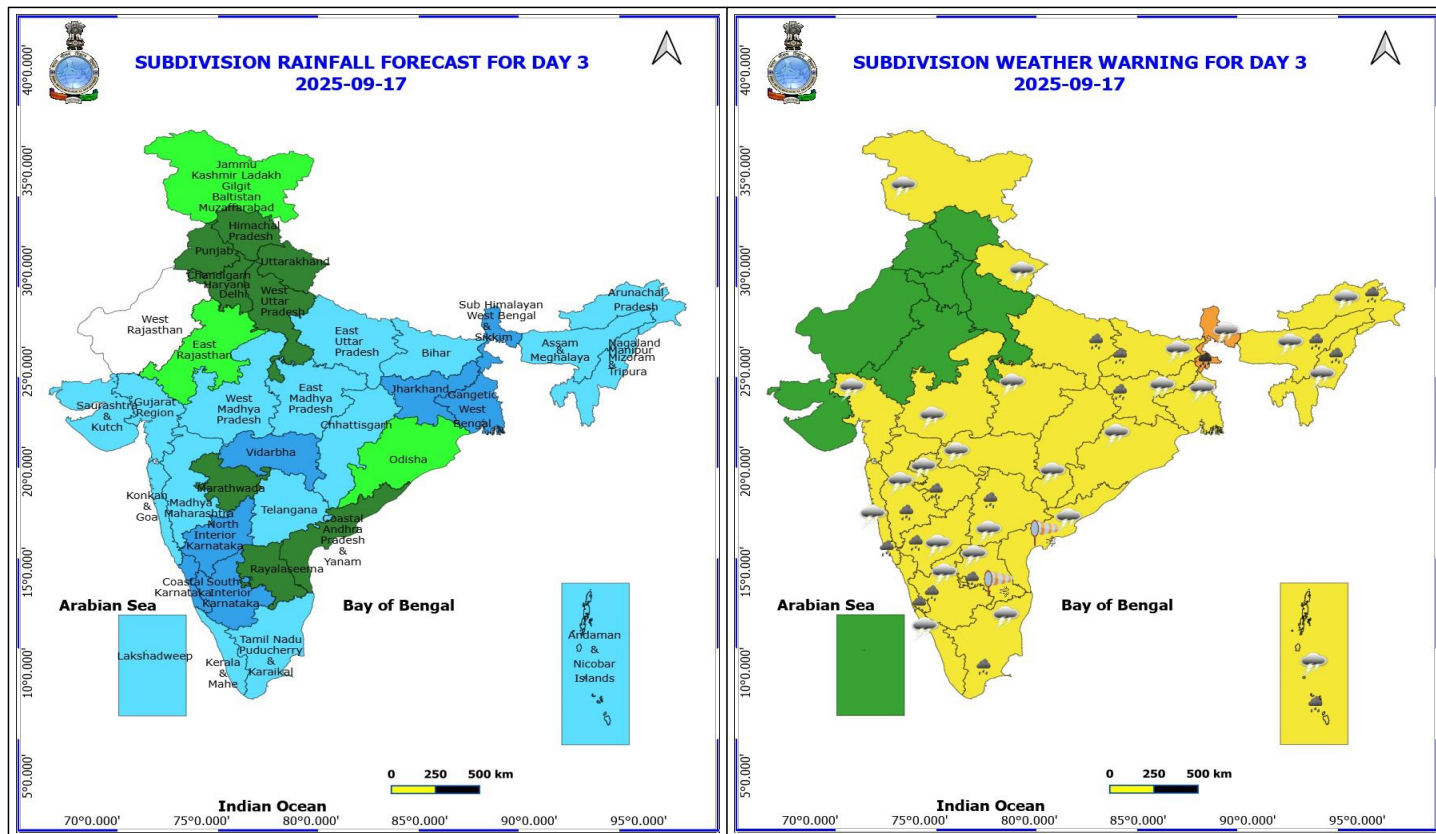
Squally weather with wind speed reaching 40 - 50 kmph gusting to 60 kmph likely to prevail over some parts of northwest, adjoining & some parts of westcentral Arabian Sea and along & off Oman coast; along and off south Konkan, Goa coasts, over Gulf of Mannar & adjoining Comorin area and over few parts of southwest Bay of Bengal & along and off south Sri Lanka coast.

***Red color warning does not mean "Red Alert" Red color warning means "Take Action"**

Forecast and warning for any day is valid from 0830 hours IST of day till 0830 hours IST of next day

For more details kindly visit <https://mausam.imd.gov.in> or contact 011-2434-4599

(Service to the nation since 1875)



17 September (Day 3)

- ❖ **Heavy to Very Heavy Rainfall** very likely at isolated places over Sub Himalayan West Bengal & Sikkim.
- ❖ **Heavy Rainfall** very likely at isolated places over Andaman & Nicobar Islands, Arunachal Pradesh, Assam & Meghalaya, Bihar, East Uttar Pradesh, Jharkhand, Karnataka, Konkan & Goa, Madhya Maharashtra, Marathwada, Nagaland, Manipur, Mizoram and Tripura, Rayalaseema, Tamil Nadu Puducherry & Karaikal and Telangana.
- ❖ **Thunderstorm accompanied with lightning & gusty winds(30-40kmph)** very likely at isolated places over Andaman & Nicobar Islands, Bihar, Jammu-Kashmir-Ladakh-Gilgit-Baltistan-Muzaffarabad, Jharkhand, Odisha and West Bengal & Sikkim.
- ❖ **Thunderstorm accompanied with Lightning** very likely at isolated places over Andaman & Nicobar Islands, Andhra Pradesh, Arunachal Pradesh, Assam & Meghalaya, Bihar, Chhattisgarh, Gangetic West Bengal, Gujarat Region, Interior Karnataka, Kerala & Mahe, Konkan & Goa, Madhya Pradesh, Maharashtra, Nagaland, Manipur, Mizoram and Tripura, Tamil Nadu Puducherry & Karaikal, Telangana and Uttarakhand.
- ❖ **Strong Surface Winds** very likely at isolated places over Andhra Pradesh.

Squally wind with speed reaching 45 kmph to 55 kmph gusting to 65 kmph is likely to prevail over some parts of southwest & westcentral Arabian Sea and along and off Somalia, south Oman coasts.

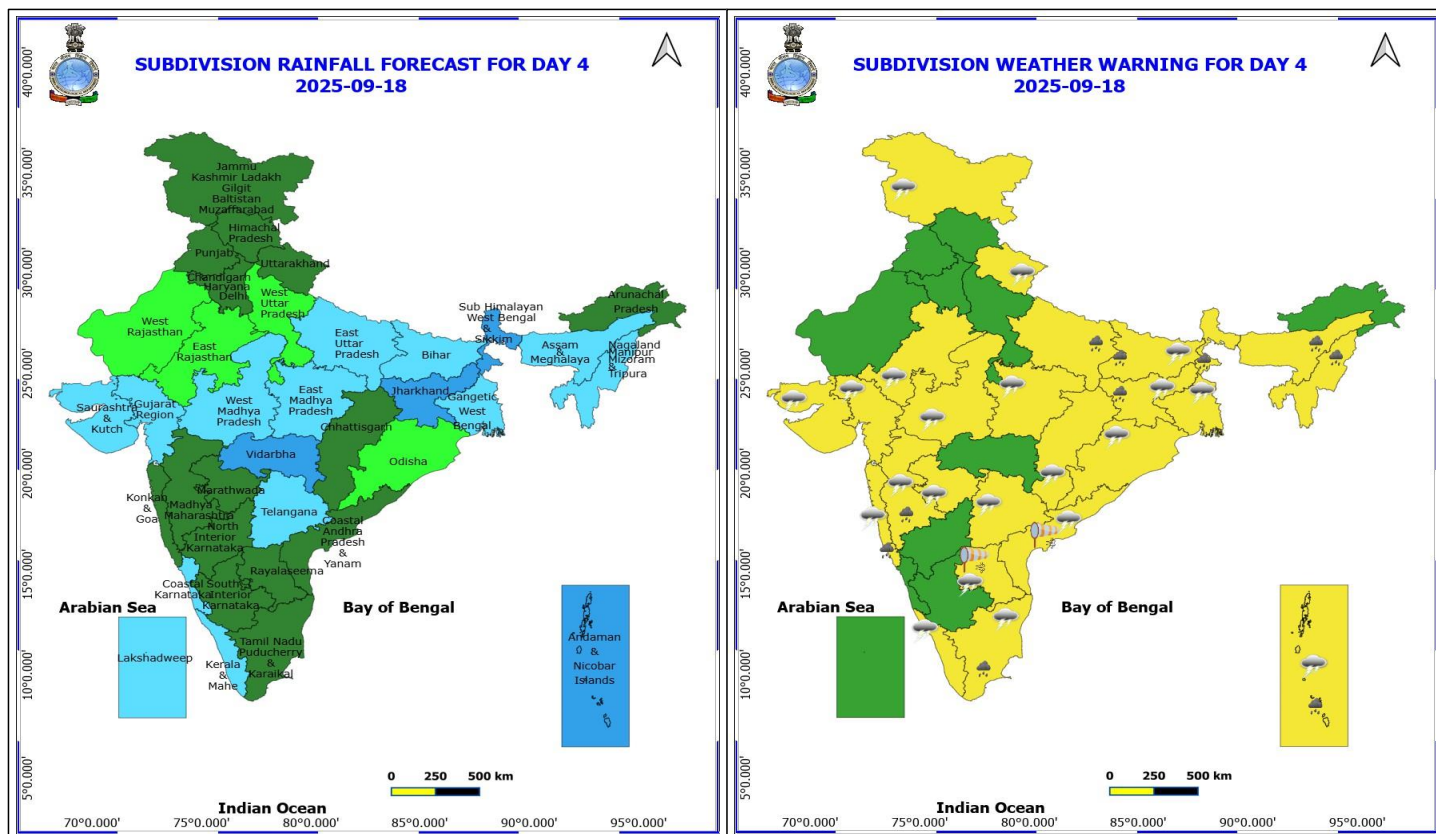
Squally weather with wind speed reaching 40 - 50 kmph gusting to 60 kmph likely to prevail over Gulf of Mannar & adjoining Comorin area and over few parts of southwest Bay of Bengal & along and off south Sri Lanka coast.

***Red color warning does not mean "Red Alert" Red color warning means "Take Action"**

Forecast and warning for any day is valid from 0830 hours IST of day till 0830 hours IST of next day

For more details kindly visit <https://mausam.imd.gov.in> or contact 011-2434-4599

(Service to the nation since 1875)



18 September (Day 4)

❖ **Heavy Rainfall** likely at isolated places over Andaman & Nicobar Islands, Assam & Meghalaya, Bihar, East Uttar Pradesh, Jharkhand, Konkan & Goa, Madhya Maharashtra, Nagaland, Manipur, Mizoram and Tripura, Sub Himalayan West Bengal & Sikkim and Tamil Nadu Puducherry & Karaikal.

❖ **Thunderstorm accompanied with lightning & gusty winds(30-40kmph)** likely at isolated places over Andaman & Nicobar Islands, Bihar, Gangetic West Bengal, Jammu-Kashmir-Ladakh-Gilgit-Baltistan-Muzaffarabad, Jharkhand and Odisha.

❖ **Thunderstorm accompanied with Lightning** likely at isolated places over Andaman & Nicobar Islands, Andhra Pradesh, Bihar, Chhattisgarh, East Rajasthan, Gujarat State, Jammu-Kashmir-Ladakh-Gilgit-Baltistan-Muzaffarabad, Kerala & Mahe, Konkan & Goa, Madhya Maharashtra, Madhya Pradesh, Marathwada, Tamil Nadu Puducherry & Karaikal, Telangana and Uttarakhand.

❖ **Strong Surface Winds** likely at isolated places over Andhra Pradesh.

Squally wind with speed reaching 45 kmph to 55 kmph gusting to 65 kmph is likely to prevail over some parts of southwest & few parts of westcentral Arabian Sea and along and off Somalia coast.

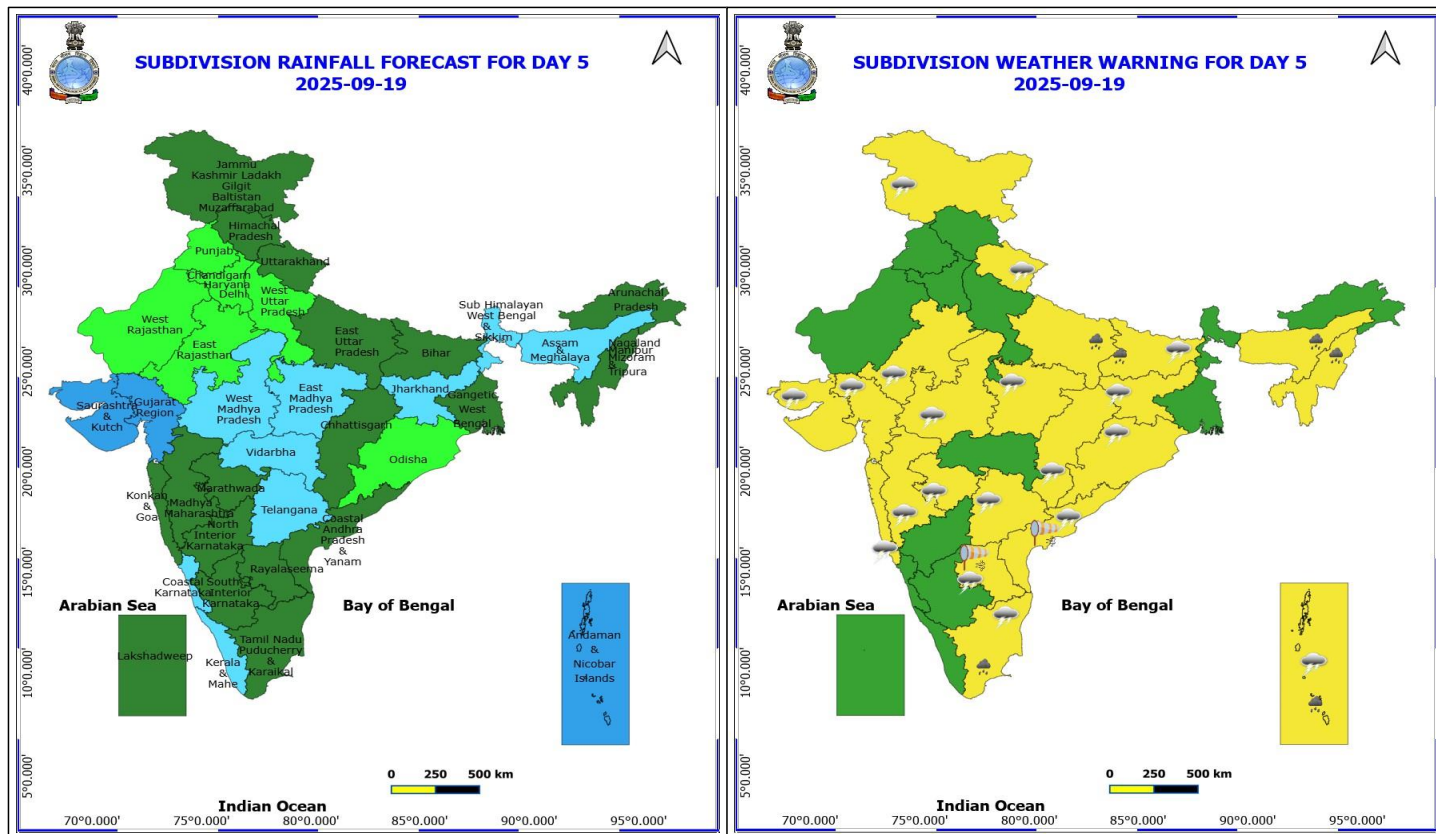
Squally weather with wind speed reaching 40 - 50 kmph gusting to 60 kmph likely to prevail over Gulf of Mannar & adjoining Comorin area and over some parts of southwest & adjoining southeast Bay of Bengal, along and off south Sri Lanka coast, over Andaman Sea, over some parts of westcentral & adjoining northwest Arabian sea.

***Red color warning does not mean "Red Alert" Red color warning means "Take Action"**

Forecast and warning for any day is valid from 0830 hours IST of day till 0830 hours IST of next day

For more details kindly visit <https://mausam.imd.gov.in> or contact 011-2434-4599

(Service to the nation since 1875)



19 September (Day 5)

- ❖ **Heavy Rainfall** likely at isolated places over Andaman & Nicobar Islands, Assam & Meghalaya, Bihar, East Uttar Pradesh, Nagaland, Manipur, Mizoram and Tripura and Tamil Nadu Puducherry & Karaikal.
- ❖ **Thunderstorm accompanied with lightning & gusty winds(40-50kmph)** likely at isolated places over Andaman & Nicobar Islands.
- ❖ **Thunderstorm accompanied with lightning & gusty winds(30-40kmph)** likely at isolated places over Bihar, Jammu-Kashmir-Ladakh-Gilgit-Baltistan-Muzaffarabad, Jharkhand and Odisha.
- ❖ **Thunderstorm accompanied with Lightning** likely at isolated places over Andhra Pradesh, Chhattisgarh, East Rajasthan, Gujarat State, Jammu-Kashmir-Ladakh-Gilgit-Baltistan-Muzaffarabad, Konkan & Goa, Madhya Maharashtra, Madhya Pradesh, Marathwada, Tamil Nadu Puducherry & Karaikal, Telangana and Uttarakhand.
- ❖ **Strong Surface Winds** likely at isolated places over Andhra Pradesh.

Squally wind with speed reaching 45 kmph to 55 kmph gusting to 65 kmph is likely to prevail over some parts of southwest & few parts of westcentral Arabian Sea and along and off Somalia coast.

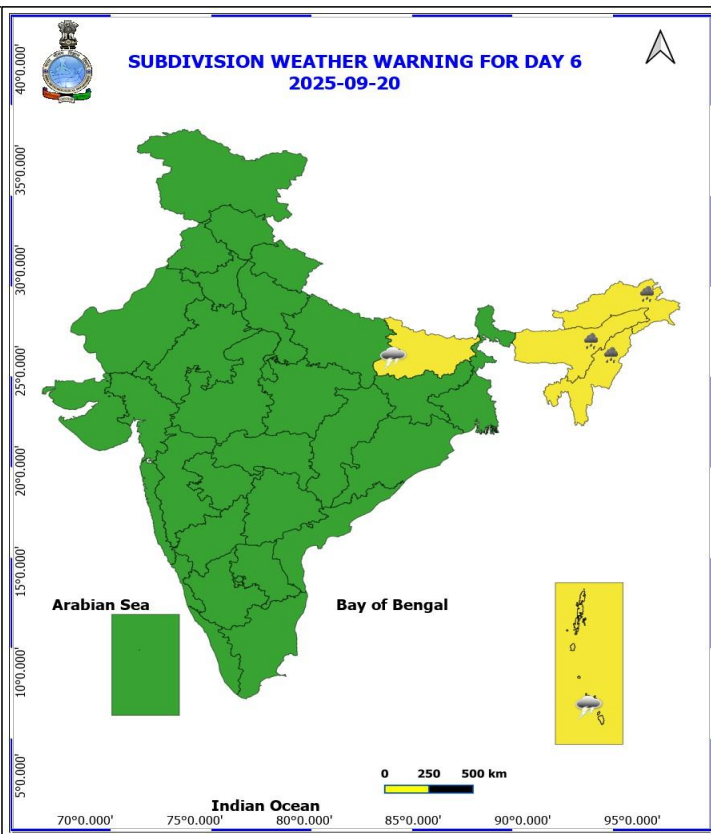
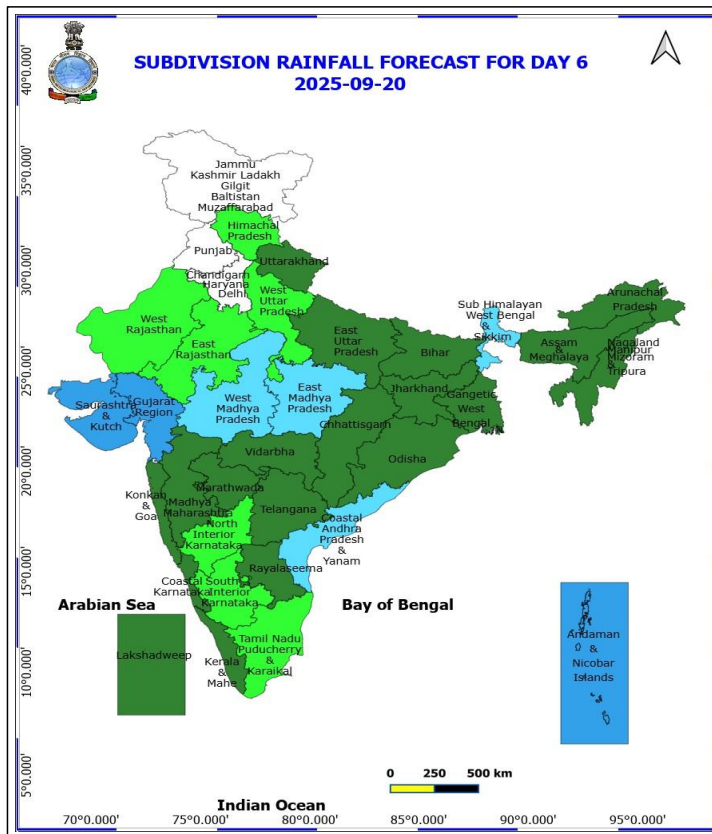
Squally weather with wind speed reaching 40 - 50 kmph gusting to 60 kmph likely to prevail over Gulf of Mannar & adjoining Comorin area and over many parts of southwest & southeast Bay of Bengal, along and off south Sri Lanka coast, over Andaman Sea, over few parts of westcentral Arabian sea.

***Red color warning does not mean "Red Alert" Red color warning means "Take Action"**

Forecast and warning for any day is valid from 0830 hours IST of day till 0830 hours IST of next day

For more details kindly visit <https://mausam.imd.gov.in> or contact 011-2434-4599

(Service to the nation since 1875)



20 September (Day 6)

- ❖ **Heavy Rainfall** likely at isolated places over Arunachal Pradesh, Assam & Meghalaya and Nagaland, Manipur, Mizoram and Tripura.
- ❖ **Thunderstorm accompanied with lightning & gusty winds(40-50kmph)** likely at isolated places over Andaman & Nicobar Islands.
- ❖ **Thunderstorm accompanied with lightning & gusty winds(30-40kmph)** likely at isolated places over Bihar.

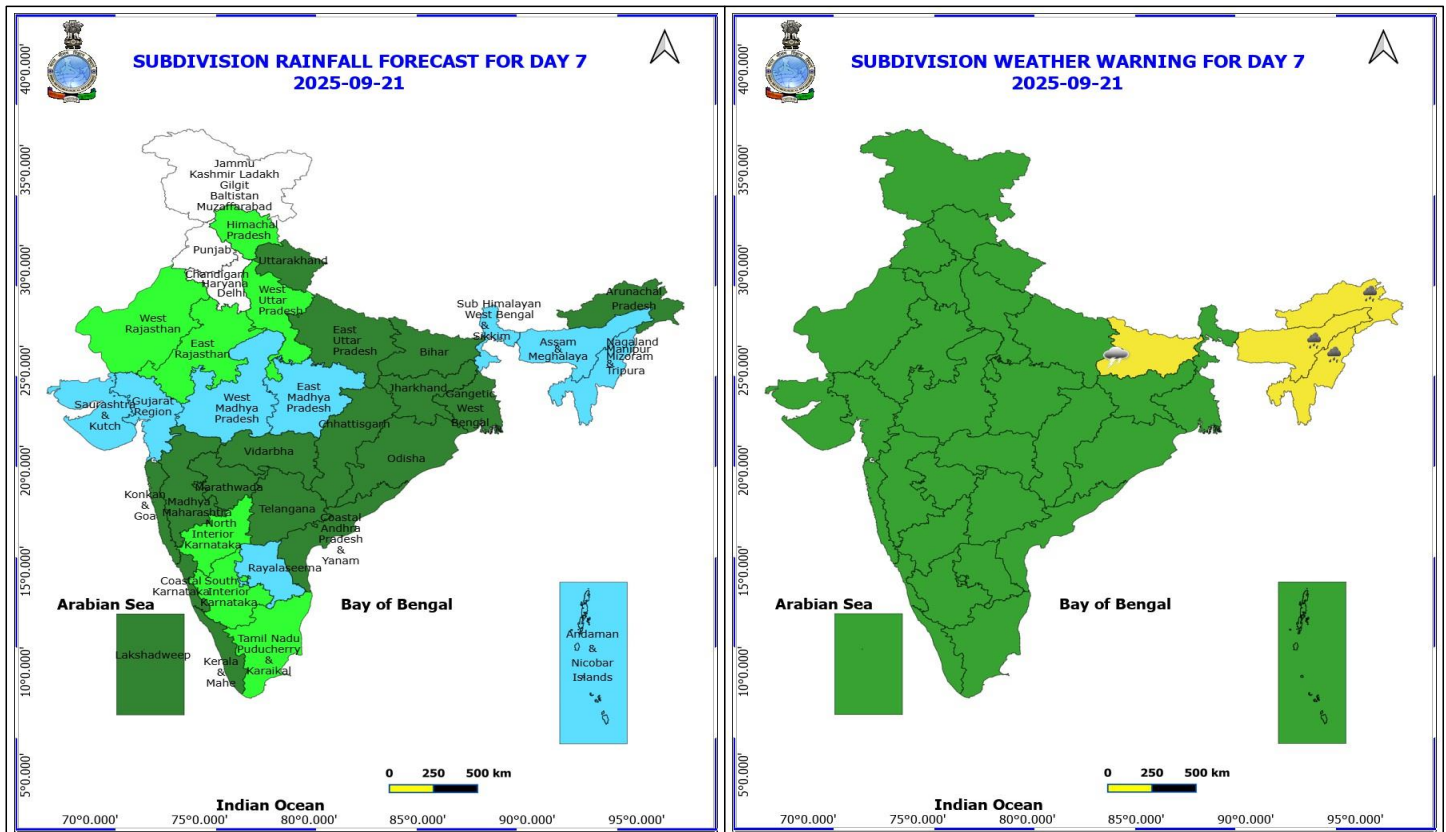
No Fishermen Warning

***Red color warning does not mean "Red Alert" Red color warning means "Take Action"**

Forecast and warning for any day is valid from 0830 hours IST of day till 0830 hours IST of next day

For more details kindly visit <https://mausam.imd.gov.in> or contact 011-2434-4599

(Service to the nation since 1875)



21 September (Day 7)

- ❖ **Heavy Rainfall** likely at isolated places over Arunachal Pradesh, Assam & Meghalaya and Nagaland, Manipur, Mizoram and Tripura.
- ❖ **Thunderstorm accompanied with lightning & gusty winds(30-40kmph)** likely at isolated places over Bihar.

No Fishermen Warning

***Red color warning does not mean "Red Alert" Red color warning means "Take Action"**

Forecast and warning for any day is valid from 0830 hours IST of day till 0830 hours IST of next day

For more details kindly visit <https://mausam.imd.gov.in> or contact 011-2434-4599

(Service to the nation since 1875)

Flash Flood Warnings

24 hours Outlook for the Flash Flood Risk (FFR) till 1730 IST of 16-09-2025:

Low to Moderate flash flood risk likely over few watersheds & neighbourhoods of following Met Sub-divisions during next 24 hours.

Assam & Meghalaya - Dibrugarh, Jorhat, Lakhimpur, N.C Hills, Nagaon, Sibsagar, Sonitpur, Tinsukia, East Khasi Hills, Ri Bhoi, South Garo Hills, West Khasi Hills and Jaintia Hills districts.

Nagaland Mizoram Manipur Tripura (NMMT) -

Nagaland- Kiphire, Kohima, Longleng, Mon, Peren, Tuensang, Wokha and Zunheboto districts.

Mizoram - Aizawl, Champhai, Lunglei and Saiha districts.

Manipur- Chandel, Churachandpur, Senapati and Tamenglong districts.

Tripura - West Tripura district.

Sub-Himalayan West Bengal & Sikkim - East Sikkim, North Sikkim, South Sikkim, West Sikkim, Darjeeling, Jalpaiguri and Kochbihar districts.

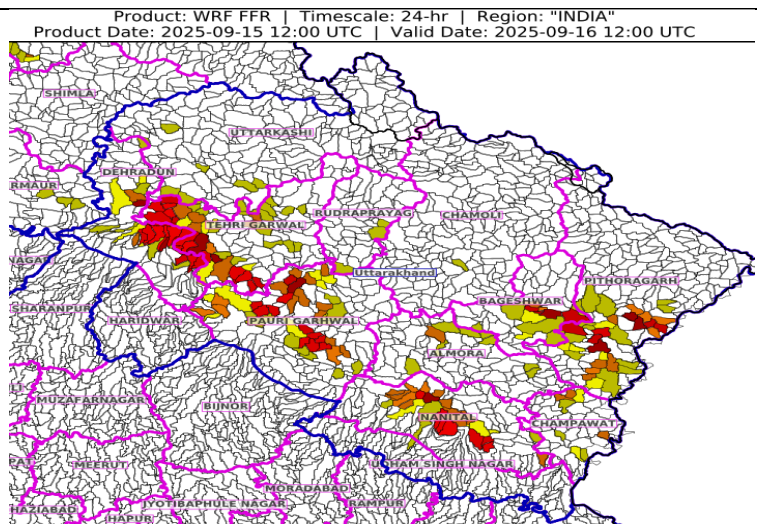
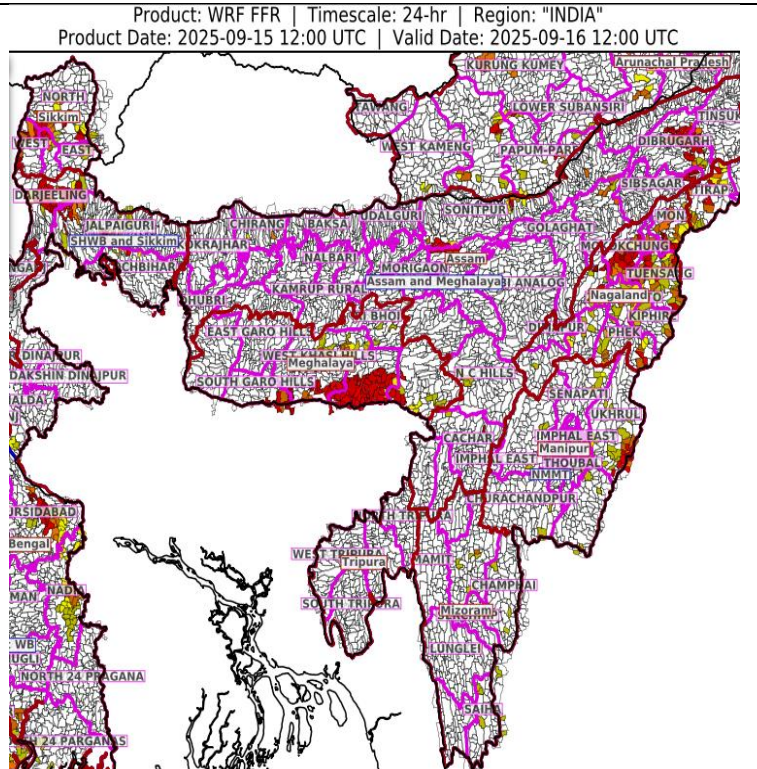
Surface runoff/ Inundation may occur at some fully saturated soils & low-lying areas over Area of Concern (AoC) as shown in map due to expected rainfall occurrence in next 24 hours.

24 hours Outlook for the Flash Flood Risk (FFR) till 1730 IST of 16-09-2025:

Low to Moderate flash flood risk likely over few watersheds & neighbourhoods of following Met Sub-divisions during next 24 hours.

Uttarakhand - Almora, Bageshwar, Chamoli, Champawat, Dehradun, Nanital, Pauri Garhwal, Pithoragarh, Rudraprayag, Tehri Garwal and Uttarkashi districts.

Surface runoff/ Inundation may occur at some fully saturated soils & low-lying areas over Area of Concern (AoC) as shown in map due to expected rainfall occurrence in next 24 hours.



***Red color warning does not mean "Red Alert" Red color warning means "Take Action"**

Forecast and warning for any day is valid from 0830 hours IST of day till 0830 hours IST of next day

For more details kindly visit <https://mausam.imd.gov.in> or contact 011-2434-4599

(Service to the nation since 1875)



Table-1

7 Days Rainfall Forecast

S.No.	Subdivision	15-Sep	16-Sep	17-Sep	18-Sep	19-Sep	20-Sep	21-Sep
		Day 1	Day 2	Day 3	Day 4	Day 5	Day 6	Day 7
1	ANDAMAN & NICOBAR ISLANDS	FWS	FWS	FWS	WS	WS	WS	FWS
2	ARUNACHAL PRADESH	WS	WS	FWS	SCT	SCT	SCT	SCT
3	ASSAM & MEHGHALAYA	WS	WS	FWS	FWS	FWS	SCT	FWS
4	N. M. M. & T.	WS	WS	FWS	FWS	SCT	SCT	FWS
5	S.H. WEST BENGAL & SIKKIM	WS	WS	WS	WS	FWS	FWS	FWS
6	GANGETIC WEST BENGAL	WS	WS	WS	FWS	SCT	SCT	SCT
7	ODISHA	SCT	SCT	ISOL	ISOL	ISOL	SCT	SCT
8	JHARKHAND	WS	WS	WS	WS	FWS	SCT	SCT
9	BIHAR	FWS	FWS	FWS	FWS	SCT	SCT	SCT
10	EAST UTTAR PRADESH	FWS	FWS	FWS	FWS	SCT	SCT	SCT
11	WEST UTTAR PRADESH	ISOL	SCT	SCT	ISOL	ISOL	ISOL	ISOL
12	UTTARAKHAND	WS	FWS	SCT	SCT	SCT	SCT	SCT
13	HARYANA, CHD & DELHI	ISOL	SCT	SCT	SCT	ISOL	DRY	DRY
14	PUNJAB	ISOL	SCT	SCT	SCT	ISOL	DRY	DRY
15	HIMACHAL PRADESH	SCT	FWS	SCT	SCT	SCT	ISOL	ISOL
16	JAMMU AND KASHMIR AND LADAKH	SCT	SCT	ISOL	SCT	SCT	DRY	DRY
17	WEST RAJASTHAN	DRY	DRY	DRY	ISOL	ISOL	ISOL	ISOL
18	EAST RAJASTHAN	ISOL	ISOL	ISOL	ISOL	ISOL	ISOL	ISOL
19	WEST MADHYA PRADESH	SCT	SCT	FWS	FWS	FWS	FWS	FWS
20	EAST MADHYA PRADESH	SCT	FWS	FWS	FWS	FWS	FWS	FWS
21	GUJRAT REGION	SCT	SCT	FWS	FWS	WS	WS	FWS
22	SAURASHTRA & KUTCH	SCT	SCT	FWS	FWS	WS	WS	FWS
23	KONKAN & GOA	WS	WS	FWS	SCT	SCT	SCT	SCT
24	MADHYA MAHARASHTRA	WS	FWS	FWS	SCT	SCT	SCT	SCT
25	MARATHWADA	WS	SCT	SCT	SCT	SCT	SCT	SCT
26	VIDARBHA	WS	WS	WS	WS	FWS	SCT	SCT
27	CHATTISGARH	FWS	FWS	FWS	SCT	SCT	SCT	SCT
28	COASTAL ANDHRA PRADESH	SCT	SCT	SCT	SCT	SCT	FWS	SCT
29	TELANGANA	FWS	FWS	FWS	FWS	FWS	SCT	SCT
30	RAYALASEEMA	ISOL	ISOL	SCT	SCT	SCT	SCT	FWS
31	TAMILNADU & PUDUCHERRY	ISOL	SCT	FWS	SCT	SCT	ISOL	ISOL
32	COSTAL KARNATAKA	FWS	WS	WS	FWS	FWS	SCT	SCT
33	NORTH INTERIOR KARNATAKA	WS	WS	WS	SCT	SCT	ISOL	ISOL
34	SOUTH INTERIOR KARNATAKA	SCT	FWS	WS	SCT	SCT	ISOL	ISOL
35	KERALA	FWS	FWS	FWS	FWS	FWS	SCT	SCT
36	LAKSHDWEAP	FWS	FWS	FWS	FWS	SCT	SCT	SCT

Legend	Category	%Stations
WS	Widespread/Most Places	76-100
FWS	Fairly Widespread/Many Places	51-75
SCT	Scattered/ A Few Places	26-50
ISOL	Isolated Places	1-25
DRY	No Rain	0

*Red color warning does not mean "Red Alert" Red color warning means "Take Action"

Forecast and warning for any day is valid from 0830 hours IST of day till 0830 hours IST of next day

For more details kindly visit <https://mausam.imd.gov.in> or contact 011-2434-4599

(Service to the nation since 1875)

Fig. 1: Maximum Temperatures Dated 2025-09-15

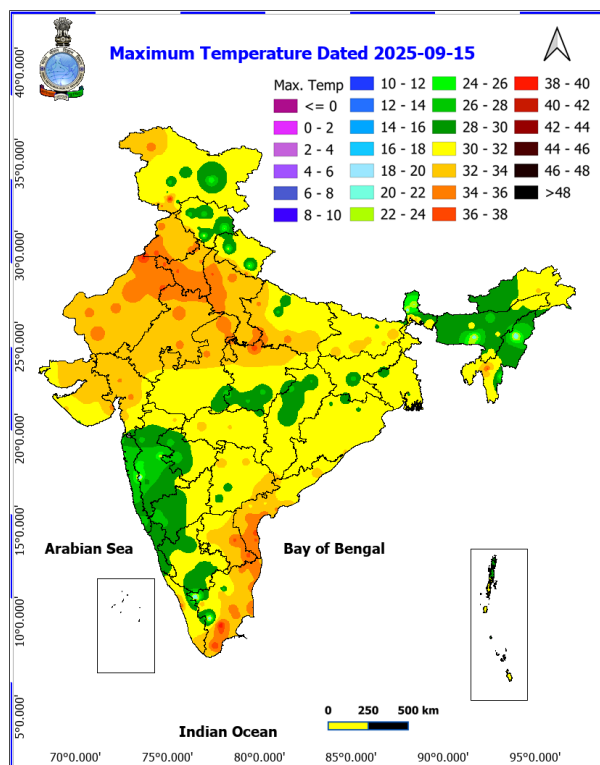


Fig. 2: Departure of Maximum Temp. Dated 2025-09-15

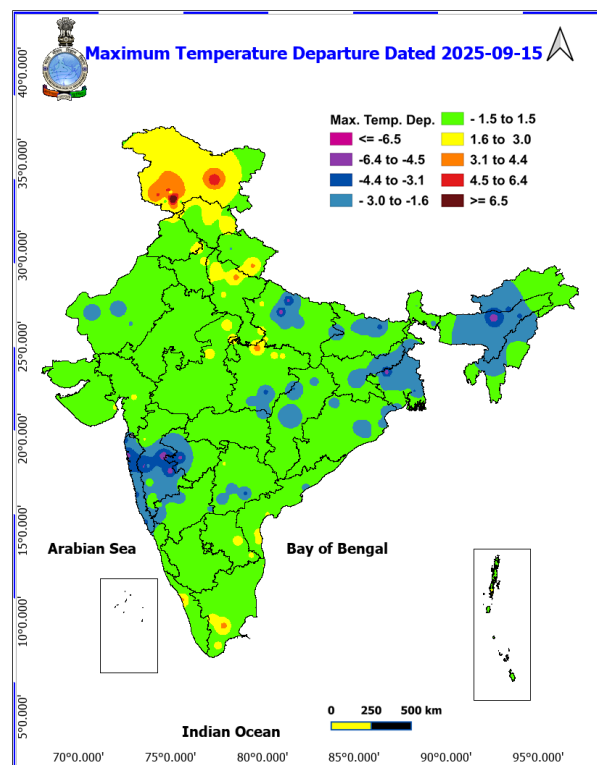


Fig. 3: Minimum Temperatures Dated 2025-09-15

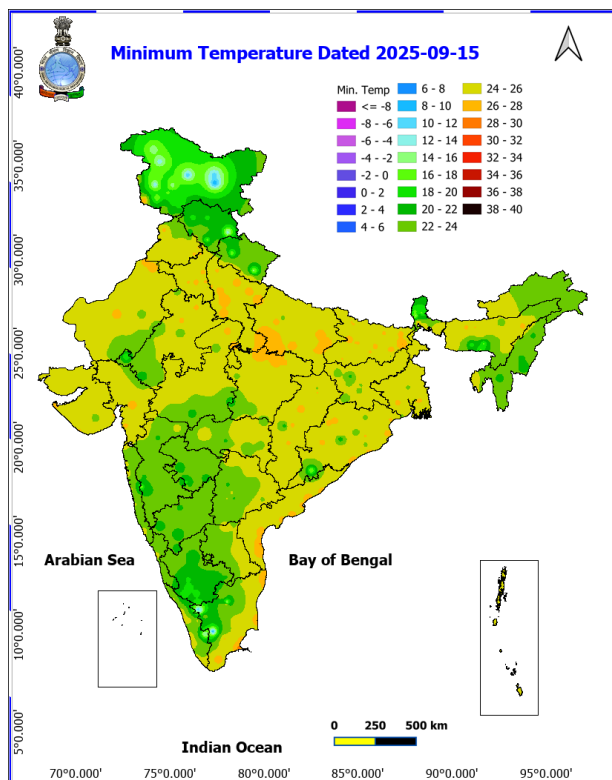
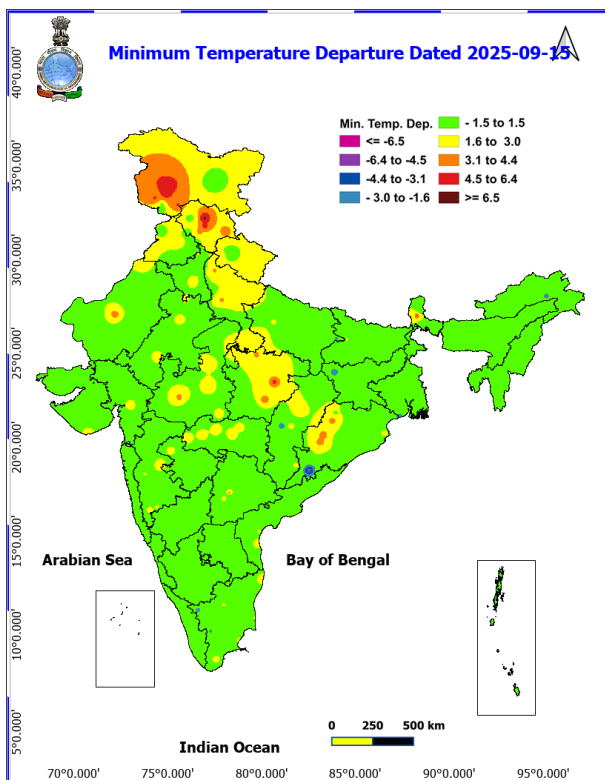
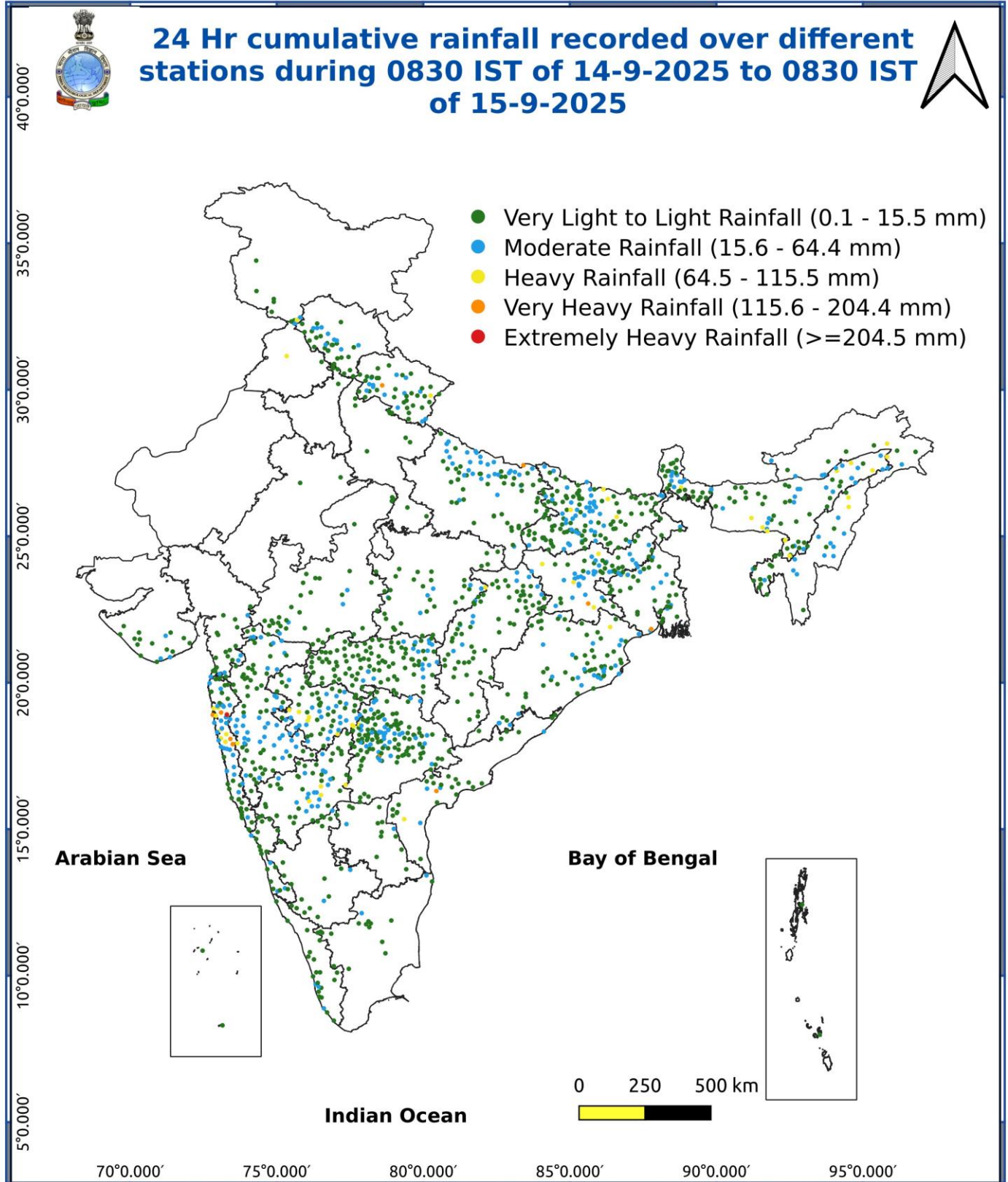


Fig. 4: Departure of Minimum Temp. Dated 2025-09-15





***Red color warning does not mean "Red Alert" Red color warning means "Take Action"**

Forecast and warning for any day is valid from 0830 hours IST of day till 0830 hours IST of next day

For more details kindly visit <https://mausam.imd.gov.in> or contact 011-2434-4599

(Service to the nation since 1875)

Impact & Action Suggested due to

Extremely heavy rainfall (≥ 21 cm) likely over Konkan and Madhya Maharashtra on 15th September.

Heavy to very heavy rainfall (12-20 cm) at isolated places over Uttarakhand, East Uttar Pradesh, Nagaland, Assam & Meghalaya on 15th; Arunachal Pradesh, Bihar, Jharkhand, Marathwada on 15th & 16th; Sub Himalayan West Bengal & Sikkim during 15th-17th and Konkan & Goa, Madhya Maharashtra on 16th September.

Impact Expected

Localized Flooding of roads, water logging in low lying areas and closure of underpasses mainly in urban areas of the above region.

Occasional reduction in visibility due to heavy rainfall.

Disruption of traffic in major cities due to water logging in roads leading to increased travel time.

Minor damage to kutcha roads.

Possibilities of damage to vulnerable structure.

Localized Landslides/Mudslides/landslips/mudslips/landsinks/mudsinks.

Damage to horticulture and standing crops in some areas due to inundation.

It may lead to riverine flooding in some river catchments (for riverine flooding please visit Web page of CWC)

Action Suggested

Check for traffic congestion on your route before leaving for your destination.

Follow any traffic advisories that are issued in this regard.

Avoid going to areas that face the water logging problems often.

Avoid staying in vulnerable structure

Agromet advisories for various parts of the country

In **Maharashtra**, keep the harvested produce of green gram and black gram at safer places in **Madhya Maharashtra** and **Vidarbha**, if storage is not possible cover the harvested produce with plastic or tarpaulin sheets. In **Marathwada**, immediately harvest the matured fruits of sapota and custard apple and keep the harvested produce at safer places. Drain out excess water from fields of vegetables and fruit orchards in **Konkan**; rice, sugarcane, pigeon pea, soybean, maize, vegetables and fruit orchards in **Madhya Maharashtra**; sugarcane, sorghum, soybean, turmeric, vegetables and fruit orchards in **Marathwada**; pigeon pea, cotton, soybean, maize, vegetables and fruit orchards in **Vidarbha**.

In **Arunachal Pradesh**, immediately harvest matured crops of *Jhum* rice, soybean, finger millet, foxtail millet, vegetables, matured bunches of banana and matured fruits of apple and kiwi and shift the harvested produce to properly covered shelter. Maintain proper drainage in standing crops such as rice, soybean, finger millet, vegetables and fruit orchards to avoid water stagnation. Avoid fresh sowing of French bean during heavy rainfall and ensure proper drainage in already sown crop.

In **Assam**, ensure proper drainage in fields of rice, sugarcane, black gram and sesame in **Hill Zone**. In **Lower Brahmaputra Valley Zone**, ensure proper drainage system in *Sali* rice fields and nursery bed of vegetables. Cover the nursery bed with thin polythene to avoid the damages due to heavy rainfall. In **Upper Brahmaputra Valley Zone**, harvest the matured vegetables and fruits and transfer it to a safer location and make arrangements to drain out excess water from the standing crop fields. In **North Bank Plain Zone**, ensure proper drainage in rice, sesame and vegetables and keep the harvested produce of jute at safer place.

In **Meghalaya**, maintain proper drainage in ginger and vegetable fields and fruit orchards. Provide support to tall and fragile crops like banana, papaya, pumpkin, etc. to prevent lodging.

In **Nagaland**, undertake harvesting of matured *Jhum* rice, pods of sesame and Naga King chilli and store the harvested produce in safe places. Maintain 3-5cm stagnate water in rice fields.

In **Sub-Himalayan West Bengal**, drain out excess water from *aman* paddy and vegetable fields (chilli, bitter gourd, pointed gourd, okra, brinjal etc.) in **Terai Zone** and black gram, finger millet, ginger, dalley khorsani, vegetables and fruit orchards in **Hill Zone**.

***Red color warning does not mean "Red Alert" Red color warning means "Take Action"**

Forecast and warning for any day is valid from 0830 hours IST of day till 0830 hours IST of next day

For more details kindly visit <https://mausam.imd.gov.in> or contact 011-2434-4599

(Service to the nation since 1875)

In **Jharkhand**, keep the harvested produce of green gram in safer places. Make necessary arrangements to drain out excess water from already sown cabbage, cauliflower, radish and early potato in **Western Plateau Zone**.

In **Bihar**, ensure proper drainage of excess rainwater from standing crops such as maize and vegetables in **North West Alluvial Plain Zone** and maize, finger millet and vegetables in **North East Alluvial Zone**.

In **Uttarakhand**, ensure proper drainage in the fields of green gram, black gram, soybean, barnyard millet and finger millet in **Sub Humid Sub Tropic Zone**. In **Bhabar and Tarai Zone**, maintain proper drainage in fields of rice, pigeon pea, black gram, green gram, finger millet, maize and soybean. Avoid sowing of potato and radish under heavy rainfall conditions and ensure proper drainage in already sown crop. In **Hill Zone**, undertake harvesting of matured crops of barnyard millet, ginger and rainfed rice and keep the harvested produce in safe place. Ensure proper drainage in pigeon pea and vegetable crops.

In **Uttar Pradesh**, make proper arrangements for drainage of excess rain water from the fields of rice, green gram, black gram, pigeon pea and vegetables in **Bundelkhand Zone**.

In **Telangana**, ensure adequate drainage facilities to drain out excess rain water in fields of rice, maize, cotton, soybean, pigeon pea, turmeric and vegetables.

Livestock / Fishery

Keep the animals inside the shed during heavy rainfall and provide them balanced feed.

Store feed and fodder in a safe place to prevent spoilage.

Construct an outlet with proper netting around the ponds to drain out excess water, thereby preventing fish from escaping in case of overflow.

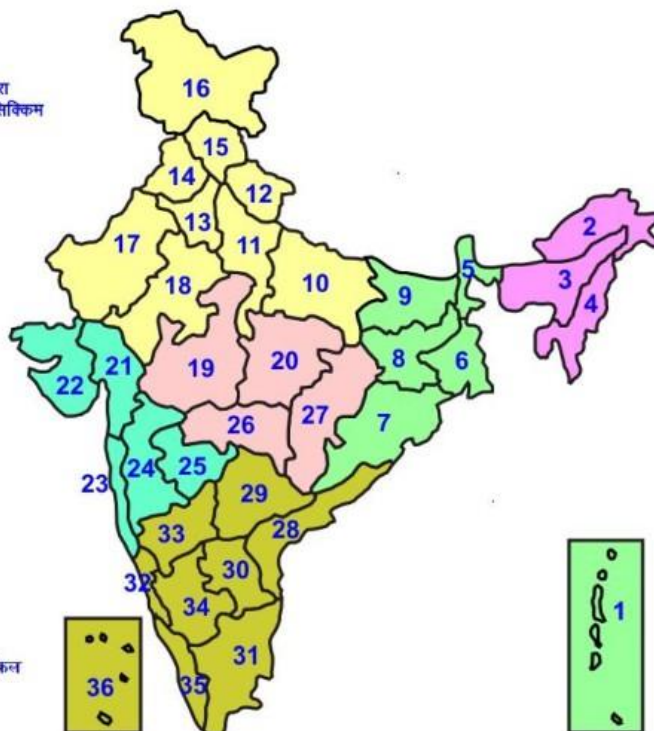
Agromet advisories for likely impact of Thunderstorm / Gusty Winds / Squally Winds

(Based on the IBF and advisories issued by different AMFUs)

Provide mechanical support to horticultural crops and staking or support to vegetables and young fruit plants / fruit-bearing plants to avoid lodging due to strong winds.

LEGENDS

- 1 अंडमान और निकोबार द्वीप समुह
- 2 अरुणाचल प्रदेश
- 3 असम और मेघालय
- 4 नागालैंड मनीपुर मीजोरम और त्रिपुरा
- 5 उप हिमालय पश्चिम बंगाल एवं सिक्किम
- 6 पश्चिम बंगाल
- 7 ओडिसा
- 8 झारखंड
- 9 बिहार
- 10 पूर्वी उत्तर प्रदेश
- 11 पश्चिम उत्तर प्रदेश
- 12 उत्तराखंड
- 13 हरियाणा चंडीगढ़ एवं दिल्ली
- 14 पंजाब
- 15 हिमाचल प्रदेश
- 16 जम्मू एवं कश्मीर एवं लद्दाख
- 17 पश्चिम राजस्थान
- 18 पूर्वी राजस्थान
- 19 पश्चिम मध्य प्रदेश
- 20 पूर्वी मध्य प्रदेश
- 21 गुजरात क्षेत्र
- 22 सौराष्ट्र एवं कच्छ
- 23 कोंकण एवं गोवा
- 24 मध्य महाराष्ट्र
- 25 मराठावाड़ा
- 26 विदर्भ
- 27 छत्तीसगढ़
- 28 तटीय आंध्र प्रदेश एवं यनम
- 29 तेलंगाना
- 30 रायलसेमा
- 31 तमिलनाडु, पुदुचेरी एवं कराईकल
- 32 तटिय कर्नाटक
- 33 आंतरिक उत्तरी कर्नाटक
- 34 आंतरिक दक्षिणी कर्नाटक
- 35 केरल एवं माहे
- 36 लक्षद्वीप



1. Andaman & Nicobar Islands
2. Arunachal Pradesh
3. Assam & Meghalaya
4. Nagaland, Manipur, Mizoram & Tripura
5. Sub-Himalayan West Bengal & Sikkim
6. Gangetic West Bengal
7. Orissa
8. Jharkhand
9. Bihar
10. East Uttar Pradesh
11. West Uttar Pradesh
12. Uttarakhand
13. Haryana, Chd & Delhi
14. Punjab
15. Himachal Pradesh
16. Jammu & Kashmir and Ladakh
17. West Rajasthan
18. East Rajasthan
19. West Madhya Pradesh
20. East Madhya Pradesh
21. Gujarat
22. Saurashtra
23. Konkan & Goa
24. Madhya Maharashtra
25. Marathwada
26. Vidharbha
27. Chhattisgarh
28. Coastal Andhra Pradesh & Yanam
29. Telangana
30. Rayalaseema
31. Tamilnadu, Puducherry & Karaikal
32. Coastal Karnataka
33. North Interior Karnataka
34. South Interior Karnataka
35. Kerala & Mahe
36. Lakshadweep

SPATIAL DISTRIBUTION (% of Stations reporting)

% Stations	Category	% Stations	Category
76-100	Widespread (WS/Most Places)	26-50	Scattered (SCT/ A Few Places)
51-75	Fairly Widespread (FWS/ Many Places)	1-25	Isolated (ISOL)

Subdivision Colour

- NO WARNING
- WATCH (BE UPDATED)
- ALERT (BE PREPARED TO TAKE ACTION)
- WARNING (TAKE ACTION)

Probabilistic Forecast

Terms	Probability of Occurrence (%)
Unlikely	< 25
Likely	25 - 50
Very Likely	50 - 75
Most Likely	> 75

-  Heavy Rain

 Thunderstorm & Lightning

 Strong surface winds

 Cold Wave

 Hot & Humid

 Very Heavy Rain

 Hailstorm

 Heat Wave


 Cold Day

 Extremely Heavy Rain

 Dust Storm

 Hot Day

 Ground Frost

 Heavy Snow

 Dust Raising Winds

 Warm Night

 FOG Fog

*Red color warning does not mean "Red Alert" Red color warning means "Take Action"

Forecast and warning for any day is valid from 0830 hours IST of day till 0830 hours IST of next day

For more details kindly visit <https://mausam.imd.gov.in> or contact 011-2434-4599

(Service to the nation since 1875)

LEGENDS

WARNING

WARNING (TAKE ACTION)
ALERT (BE PREPARED)
WATCH (BE UPDATED)
NO WARNING (NO ACTION)

Probabilistic Forecast

Terms	Probability of Occurrence (%)
Unlikely	< 25
Likely	25 - 50
Very Likely	50 - 75
Most Likely	> 75



Heavy: 64.5 to 115.5 mm/cm *
Very Heavy: 115.6 to 204.4 mm/cm *
Extremely Heavy: > 204.4 mm/cm *



When maximum temperature of a station reaches $\geq 40^{\circ}\text{C}$ for plains and $\geq 30^{\circ}\text{C}$ for hilly regions
(a) Based on Departure from normal

Heat Wave: Maximum Temperature Departure from normal 4.5°C to 6.4°C .
Severe Heat Wave: Maximum Temperature Departure from normal $\geq 6.5^{\circ}\text{C}$

(b). Based on Actual maximum temperature

Heat Wave: When actual maximum temperature $\geq 45^{\circ}\text{C}$.
Severe Heat Wave: When actual maximum temperature $\geq 47^{\circ}\text{C}$

(c). Criteria for heat wave for coastal stations

When maximum temperature departure is $> 4.5^{\circ}\text{C}$ from normal. Heat Wave may be described provided maximum temperature $\geq 37^{\circ}\text{C}$



When maximum temperature remains 40°C

Warm Night: When minimum temperature departure 4.5°C to 6.4°C .
Severe Warm Night: When minimum temperature departure $> 6.4^{\circ}\text{C}$.



When minimum temperature of a station $\leq 10^{\circ}\text{C}$ for plains and $\leq 0^{\circ}\text{C}$ for hilly regions.

(a). Based on departure

Cold Wave: Minimum Temperature Departure from normal -4.5°C to -6.4°C .
Severe Cold Wave: Minimum Temperature Departure from normal $\leq -6.5^{\circ}\text{C}$

(b) Based on actual Minimum Temperature (for Plains only)

Cold Wave: When Minimum Temperature is $\leq 4.0^{\circ}\text{C}$
Severe Cold Wave: When Minimum Temperature is $\leq 2.0^{\circ}\text{C}$

(c) For Coastal Stations

When Minimum Temperature departure is $\leq -4.5^{\circ}\text{C}$ & actual Minimum Temperature is $\leq 15^{\circ}\text{C}$



When minimum temperature of a station $\leq 10^{\circ}\text{C}$ for plains and $\leq 0^{\circ}\text{C}$ for hilly regions
Based on departure

Cold Day: Maximum Temperature Departure from normal -4.5°C to -6.4°C .
Severe Cold Day: Maximum Temperature Departure from normal $\leq -6.5^{\circ}\text{C}$



Phenomenon of small droplets suspended in air and the horizontal visibility $< 1\text{km}$

Moderate Fog: When the visibility between 500-200 metres
Dense Fog: when the visibility between 50-200 metres
Very Dense Fog: when the visibility < 50 metres



Sudden electrical discharges manifested by a flash of light (Lightning) and a sharp rumbling sound (thunder)



An ensemble of particles of dust or sand energetically lifted to great heights by a strong and turbulent wind.



Ice deposits on ground

Air temperature $\leq 4^{\circ}\text{C}$ (over Plains)



A strong wind that rises suddenly, lasts for at least 1 minute.

Moderate: Wind speed 52-61 kmph
Severe: Wind speed 62-87 kmph
Very Severe: Wind speed > 87 kmph



Effect of various waves in the sea over specific area

Rough to very rough: Wind speed 41-62 kmph (22-33 knots) & Wave height 2.5-6 metre
High to very high: Wind speed 63-117 kmph (34-63 knots) & Wave height 6-14 metre
Phenomenal: Wind speed > 117 kmph (> 63 knots) & Wave height > 14 metre



Cyclonic Storm: Wind speed 62-87 kmph (34-47 knots)

Severe Cyclonic Storm: Wind speed 88-117 kmph (48-63 knots)
Very Severe Cyclonic Storm: Wind speed 118-165 kmph (64-89 knots)
Extremely Severe Cyclonic Storm: Wind speed 166-220 kmph (90-119 knots)
Super Cyclone Storm: Wind speed > 220 kmph (> 119 knots)

*Red color warning does not mean "Red Alert" Red color warning means "Take Action"

Forecast and warning for any day is valid from 0830 hours IST of day till 0830 hours IST of next day

For more details kindly visit <https://mausam.imd.gov.in> or contact 011-2434-4599

(Service to the nation since 1875)